
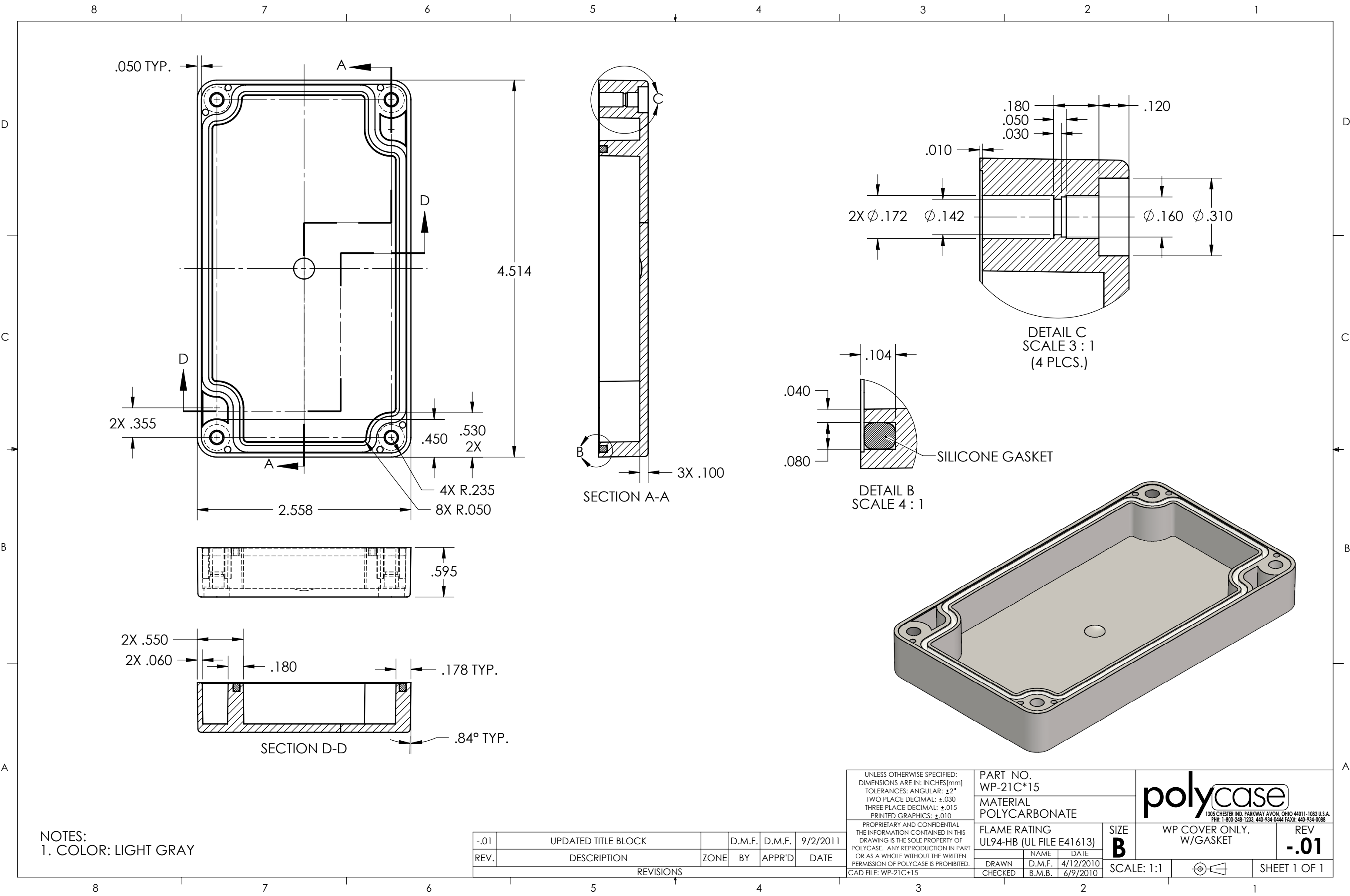


TOLERANCE CHART			
6 SIGMA			
DIMENSION RANGE	TOOL DEPENDENT	NON-TOOL DEPENDENT	
.000 .040	±.0018	±.0042	
.040 .120	±.0024	±.0054	
.120 .240	±.0030	±.0060	
.240 .390	±.0036	±.0066	
.390 .590	±.0042	±.0072	
.590 .870	±.0048	±.0072	
.870 1.180	±.0054	±.0078	
1.180 1.570	±.0060	±.0084	
1.570 2.090	±.0072	±.0096	
2.090 2.760	±.0078	±.0108	
2.760 3.540	±.0090	±.0120	
3.540 4.700	±.0108	±.0132	
4.700 6.300	±.0126	±.0150	
6.300 7.870	±.0150	±.0180	

REV.	DESCRIPTION	ZONE	BY	APPR'D	DATE
REVISIONS					

NOTES:
1. COLOR: LIGHT GRAY
2. SEE SOLID MODEL FOR COMPLETE PART DEFINITION.

UNLESS OTHERWISE SPECIFIED: DIMENSIONS ARE IN: INCHES[mm] TOLERANCES: ANGULAR: ±2° TWO PLACE DECIMAL: ±.030 THREE PLACE DECIMAL: ±.015 PRINTED GRAPHICS: ±.010 PROPRIETARY AND CONFIDENTIAL THE INFORMATION CONTAINED IN THIS DRAWING IS THE SOLE PROPERTY OF POLYCASE. ANY REPRODUCTION IN PART OR AS A WHOLE WITHOUT THE WRITTEN PERMISSION OF POLYCASE IS PROHIBITED. CAD FILE: WP-22BF*15	PART NO. WP-22BF*15		<div>polycase</div> <div>1305 CHESTER RD. PARKWAY AVON, OHIO 44011-1083 U.S.A. PH: 1-800-248-1233 440-934-0444 FAX: 440-934-0088</div>		
	MATERIAL POLYCARBONATE				
	FLAME RATING UL94-HB (UL FILE E41613)		SIZE C	WP BASE, W/PCB, W/MTG FLANGES	REV -
	DRAWN CHECKED	D.M.F. 8/12/2011 C.C.B. 8/29/2011	SCALE: 1:1		SHEET 1 OF 1



NOTES:
1. COLOR: LIGHT GRAY

REV.	DESCRIPTION	ZONE	BY	APPR'D	DATE
-.01	UPDATED TITLE BLOCK		D.M.F.	D.M.F.	9/2/2011
REVISIONS					

UNLESS OTHERWISE SPECIFIED:
DIMENSIONS ARE IN: INCHES [mm]
TOLERANCES: ANGULAR: ±2°
TWO PLACE DECIMAL: ±.030
THREE PLACE DECIMAL: ±.015
PRINTED GRAPHICS: ±.010

PROPRIETARY AND CONFIDENTIAL
THE INFORMATION CONTAINED IN THIS
DRAWING IS THE SOLE PROPERTY OF
POLYCASE. ANY REPRODUCTION IN PART
OR AS A WHOLE WITHOUT THE WRITTEN
PERMISSION OF POLYCASE IS PROHIBITED.
CAD FILE: WP-21C+15

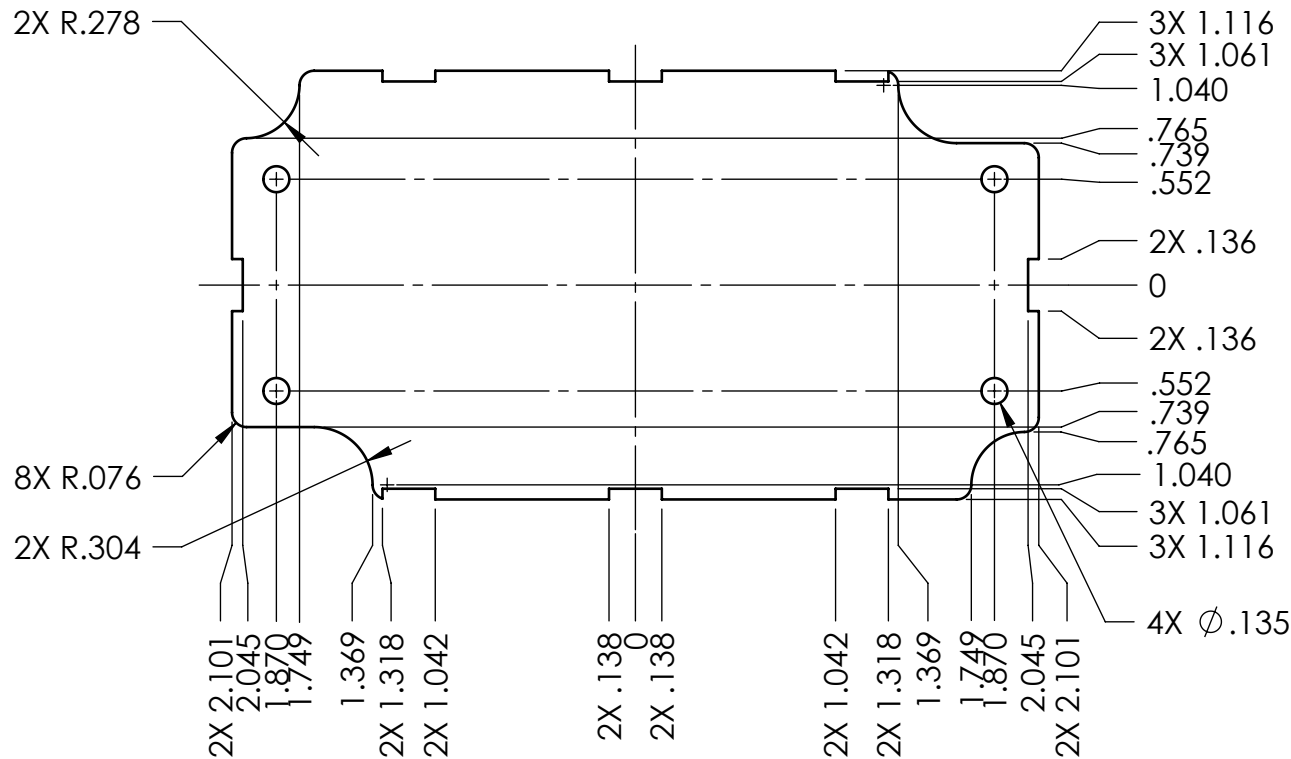
PART NO.
WP-21C*15

MATERIAL
POLYCARBONATE

FLAME RATING
UL94-HB (UL FILE E41613)



DRAWN	NAME	DATE
CHECKED	B.M.B.	6/9/2010

polycase 1305 CHESTER IND. PARKWAY AVON, OHIO 44011-1083 U.S.A. PH#: 1-800-248-1233, 440-934-0444 FAX#: 440-934-0088		WP COVER ONLY, W/GASKET		REV -.01
SCALE: 1:1		SHEET 1 OF 1		



NOTES:

1. PCB MOUNTING BOSSES ACCEPT A M3 OR #4 THREAD FORMING SCREW.
2. INCLUDES .031 CLEARANCE FROM INTERIOR OF WP-22BF*15.

UNLESS OTHERWISE SPECIFIED: DIMENSIONS ARE IN: INCHES[mm] TOLERANCES: ANGULAR: ±2° TWO PLACE DECIMAL: ±.010 THREE PLACE DECIMAL: ±.005 PRINTED GRAPHICS: ±.010	PART NO. WP-22BF*15-PCB		<div> 1305 CHESTER IND. PARKWAY AVON, OHIO 44011-1083 U.S.A. PH#: 1-800-248-1233, 440-934-0444 FAX#: 440-934-0088</div>			
	MATERIAL					
PROPRIETARY AND CONFIDENTIAL THE INFORMATION CONTAINED IN THIS DRAWING IS THE SOLE PROPERTY OF POLYCASE. ANY REPRODUCTION IN PART OR AS A WHOLE WITHOUT THE WRITTEN PERMISSION OF POLYCASE IS PROHIBITED.	FLAME RATING		SIZE A	PCB TEMPLATE	REV -	
		NAME	DATE			
	DRAWN	D.M.F.	8/12/2011			
CAD FILE: WP-22BF*15-PCB	CHECKED	C.C.B.	8/29/2011	SCALE: 1:1		SHEET 1 OF 1

ZONE	REV.	DESCRIPTION	BY	APPR'D	DATE
REVISIONS					

5

4

3

2

1

A

B

C

D

Enable 3D View