

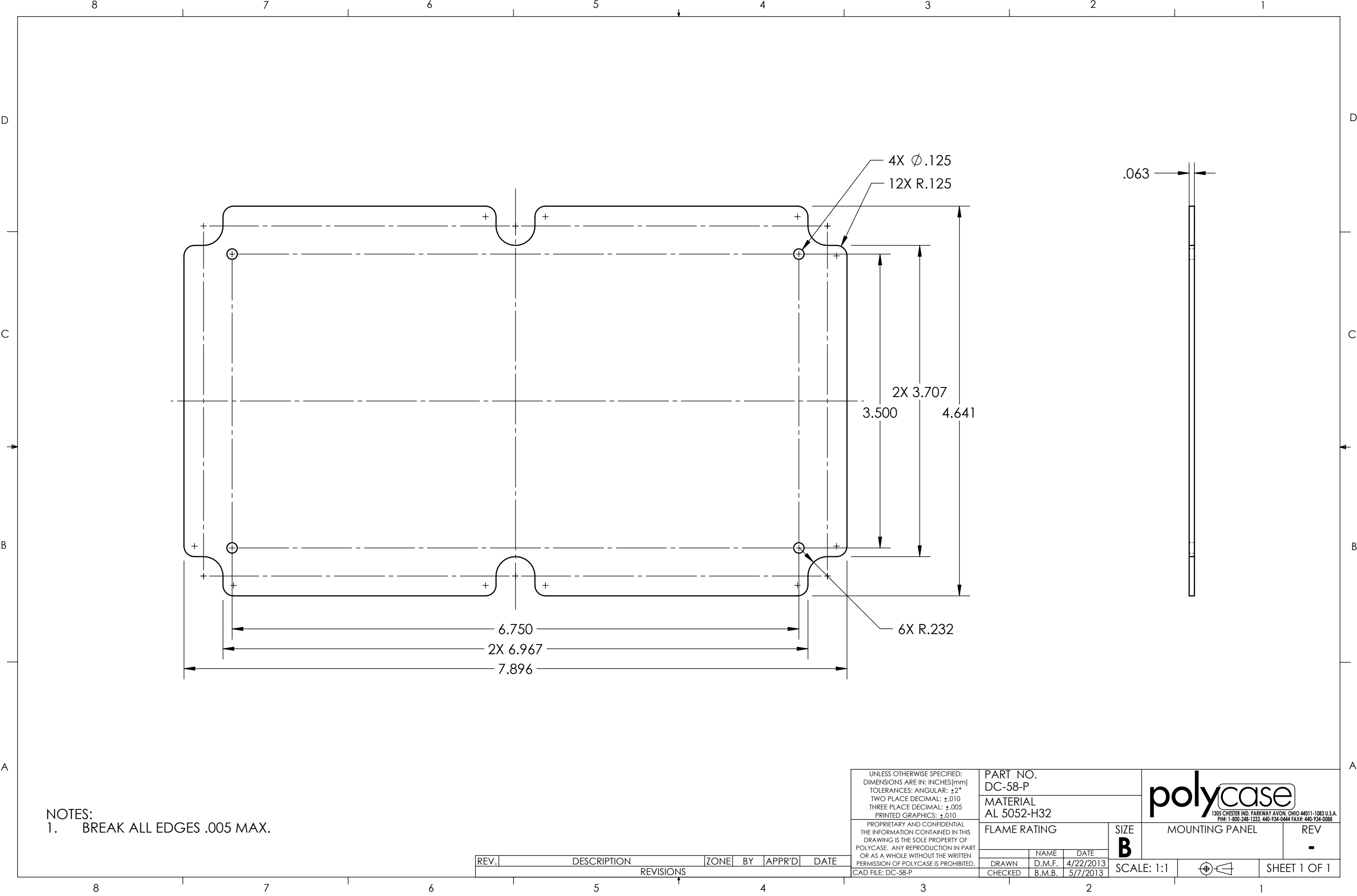


BOM Table					
ITEM NO.	PART NUMBER	Rev.	Description	Material	QTY.
1	DC-58-P	-	MOUNTING PANEL	AL 5052-H32	1
2	SCREWS-MBR	-.01	#4-24 HI-LO X .25 THREAD FORMING, PHILLIPS, PAN HEAD, SCREW	AISI 1019-1022	4

UNLESS OTHERWISE SPECIFIED: DIMENSIONS ARE IN: INCHES[mm] TOLERANCES: ANGULAR: ±2° TWO PLACE DECIMAL: ±.010 THREE PLACE DECIMAL: ±.005 PRINTED GRAPHICS: ±.010	PART NO. DC-58K			<div><div>1305 CHESTER IND. PARKWAY AVON, OHIO 44011-1083 U.S.A. PH#: 1-800-248-1233, 440-934-0444 FAX#: 440-934-0088</div></div>							
	MATERIAL										
	FLAME RATING		SIZE B	MOUNTING PANEL KIT		REV -					
	<table><tr><td>DRAWN</td><td>D.M.F.</td><td>5/1/2013</td></tr><tr><td>CHECKED</td><td>B.M.B.</td><td>5/7/2013</td></tr></table>		DRAWN	D.M.F.	5/1/2013	CHECKED	B.M.B.	5/7/2013	SCALE: 1:1		SHEET 1 OF 1
DRAWN	D.M.F.	5/1/2013									
CHECKED	B.M.B.	5/7/2013									
CAD FILE: DC-58K											
PROPRIETARY AND CONFIDENTIAL THE INFORMATION CONTAINED IN THIS DRAWING IS THE SOLE PROPERTY OF POLYCASE. ANY REPRODUCTION IN PART OR AS A WHOLE WITHOUT THE WRITTEN PERMISSION OF POLYCASE IS PROHIBITED.											

REV.	DESCRIPTION	ZONE	BY	APPR'D	DATE
REVISIONS					



NOTES:
1. BREAK ALL EDGES .005 MAX.

REV.	DESCRIPTION	ZONE	BY	APPR'D	DATE
REVISIONS					

UNLESS OTHERWISE SPECIFIED:
DIMENSIONS ARE IN: INCHES [mm]
TOLERANCES: ANGULAR: ±2°
TWO PLACE DECIMAL: ±.010
THREE PLACE DECIMAL: ±.005
PRINTED GRAPHICS: ±.010

PROPRIETARY AND CONFIDENTIAL
THE INFORMATION CONTAINED IN THIS
DRAWING IS THE SOLE PROPERTY OF
POLYCASE. ANY REPRODUCTION IN PART
OR AS A WHOLE WITHOUT THE WRITTEN
PERMISSION OF POLYCASE IS PROHIBITED.

CAD FILE: DC-58-P

PART NO. DC-58-P		
MATERIAL AL 5052-H32		
FLAME RATING		SIZE B
DRAWN	NAME D.M.F.	DATE 4/22/2013
CHECKED	B.M.B.	5/7/2013

polycase

1305 CHESTER IND. PARKWAY AVON, OHIO 44011-1083 U.S.A.
PH#: 1-800-248-1233, 440-934-0444 FAX#: 440-934-0088

MOUNTING PANEL		REV -
SCALE: 1:1		SHEET 1 OF 1