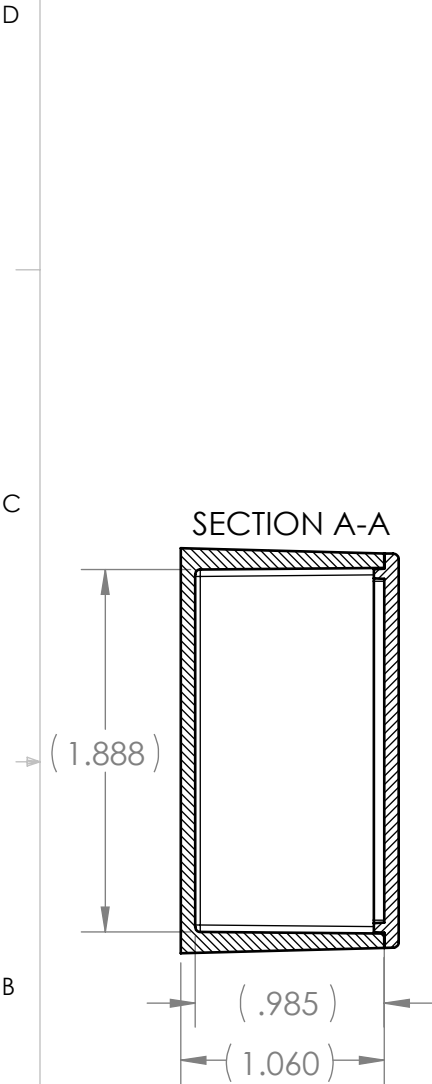
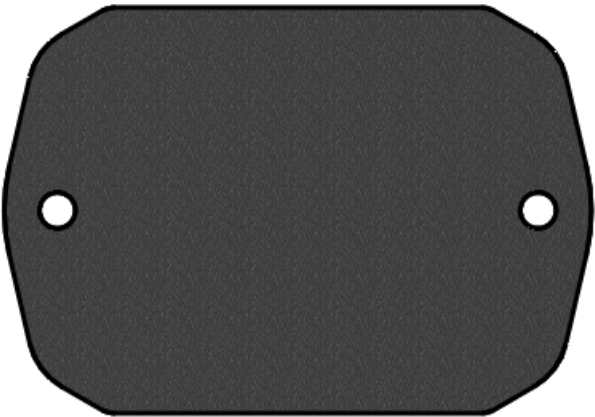
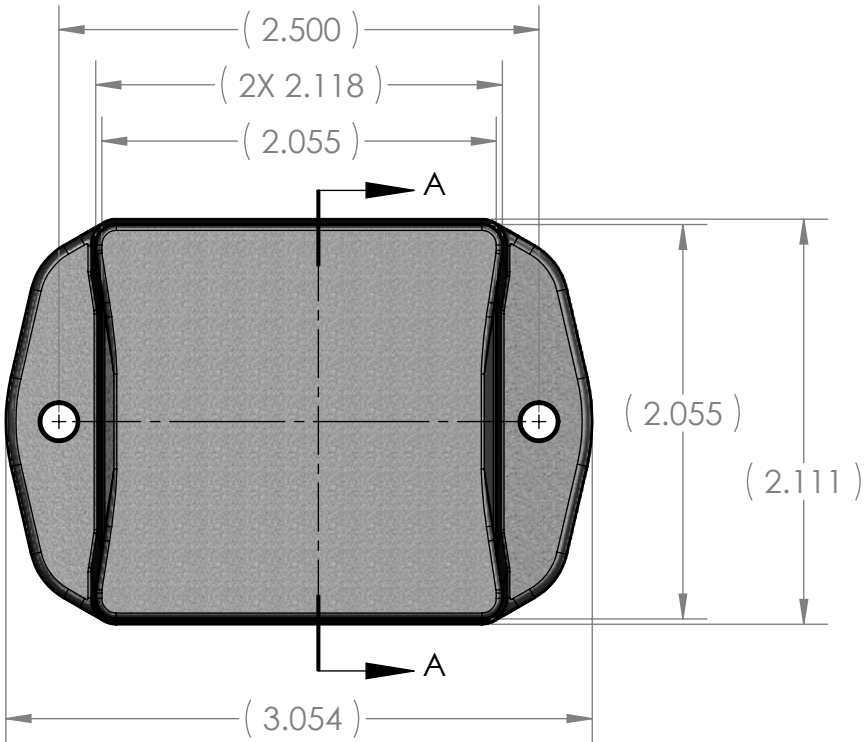
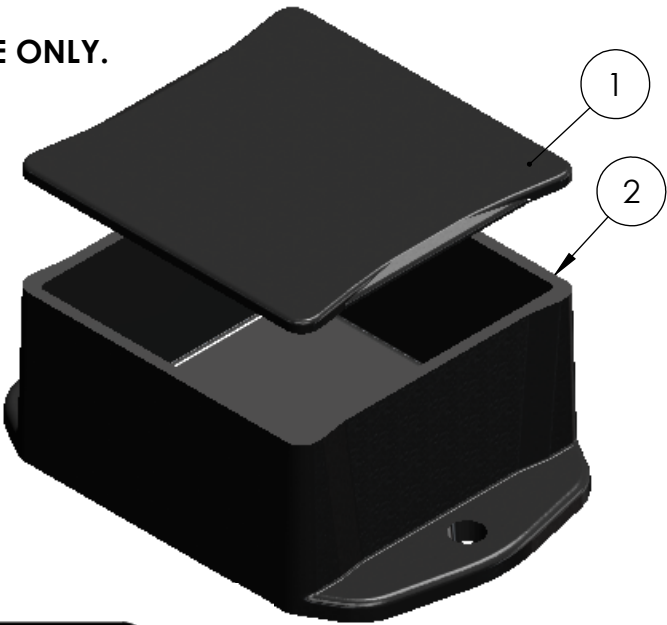

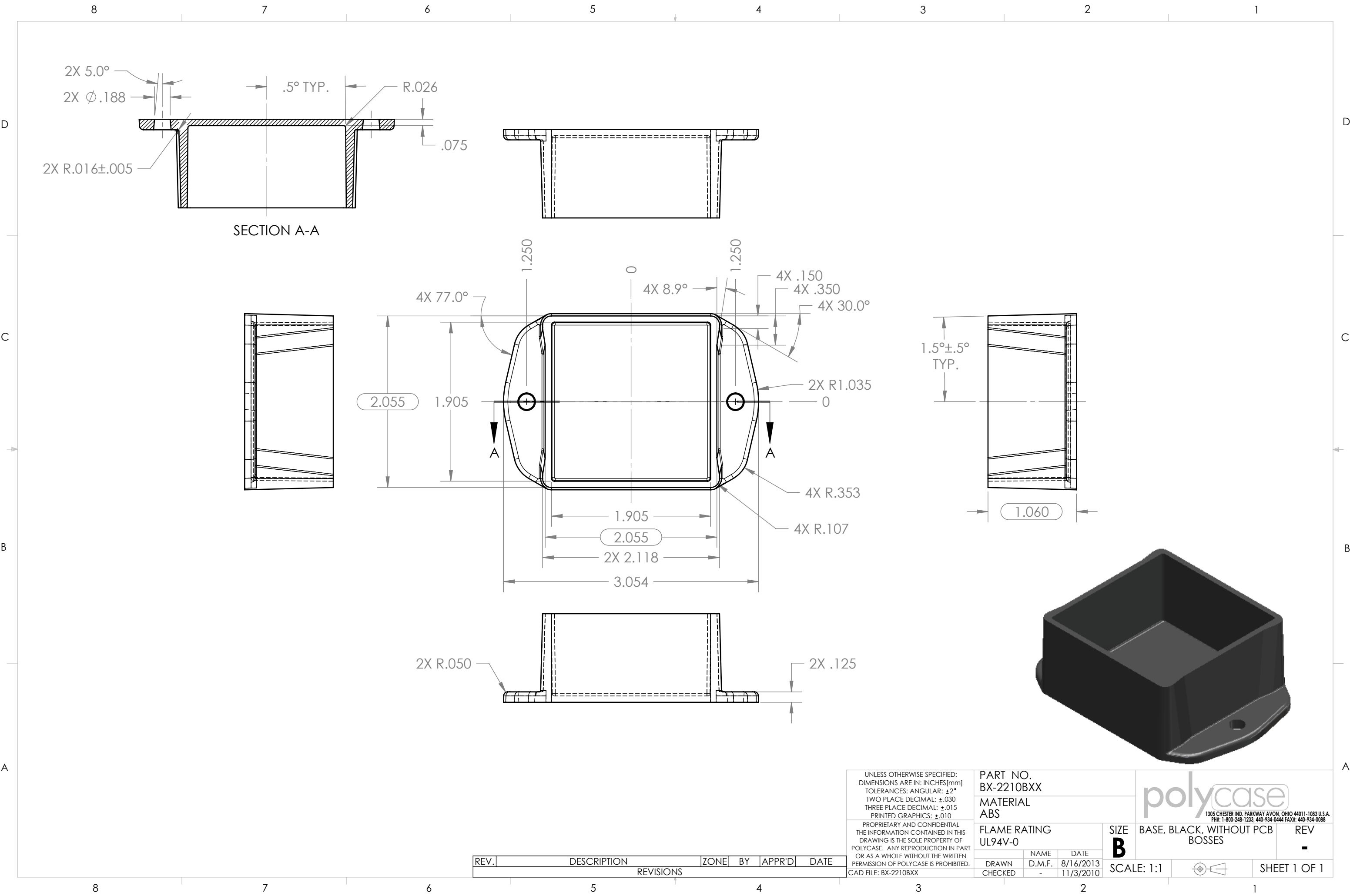


ITEM NO.	PART NUMBER	Rev.	DESCRIPTION	MATERIAL	Color
1	BX-22C	-	BX SERIES COVER	ABS	BLACK
2	BX-2210BXX	-	BASE, BLACK, WITHOUT PCB BOSSES	ABS	BLACK

NOTE: ALL COMPONENTS ARE SOLD AND PRICED SEPARATELY. SHOWN ASSEMBLED FOR REFERENCE ONLY.



UNLESS OTHERWISE SPECIFIED: DIMENSIONS ARE IN: INCHES[mm] TOLERANCES: ANGULAR: ±2° TWO PLACE DECIMAL: ±.030 THREE PLACE DECIMAL: ±.015 PRINTED GRAPHICS: ±.010			PART NO. BX-2210XX		<div>polycase</div> <div>1305 CHESTER IND. PARKWAY AVON, OHIO 44011-1083 U.S.A. PH#: 1-800-248-1233, 440-934-0444 FAX#: 440-934-0088</div>						
			MATERIAL								
PROPRIETARY AND CONFIDENTIAL THE INFORMATION CONTAINED IN THIS DRAWING IS THE SOLE PROPERTY OF POLYCASE. ANY REPRODUCTION IN PART OR AS A WHOLE WITHOUT THE WRITTEN PERMISSION OF POLYCASE IS PROHIBITED. CAD FILE: BX-2210XX ASS'Y			FLAME RATING UL94V-0		SIZE <b>B</b>	BX SERIES ASSEMBLY, BLACK, WITHOUT PCB BOSSES		REV -			
			DRAWN		NAME		DATE				
			CHECKED		D.M.F.		9/10/2013				
		-		11/3/2010		SCALE: 1:1				SHEET 1 OF 1	



UNLESS OTHERWISE SPECIFIED:  
DIMENSIONS ARE IN: INCHES [mm]  
TOLERANCES: ANGULAR:  $\pm 2^\circ$   
TWO PLACE DECIMAL:  $\pm .030$   
THREE PLACE DECIMAL:  $\pm .015$   
PRINTED GRAPHICS:  $\pm .010$   
PROPRIETARY AND CONFIDENTIAL  
THE INFORMATION CONTAINED IN THIS  
DRAWING IS THE SOLE PROPERTY OF  
POLYCASE. ANY REPRODUCTION IN PART  
OR AS A WHOLE WITHOUT THE WRITTEN  
PERMISSION OF POLYCASE IS PROHIBITED.  
CAD FILE: BX-2210BXX

PART NO.  
BX-2210BXX  
MATERIAL  
ABS

FLAME RATING  
UL94V-0

DRAWN	CHECKED	NAME	DATE
		D.M.F.	8/16/2013
		-	11/3/2010

SIZE  
**B**

BASE, BLACK, WITHOUT PCB  
BOSSSES

REV  
-

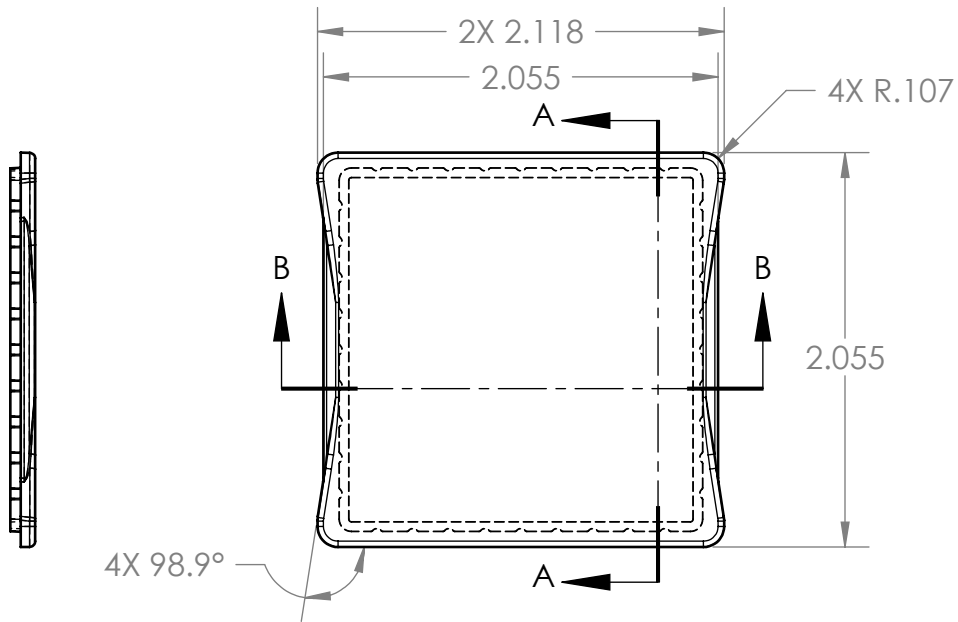
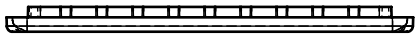
SCALE: 1:1



SHEET 1 OF 1

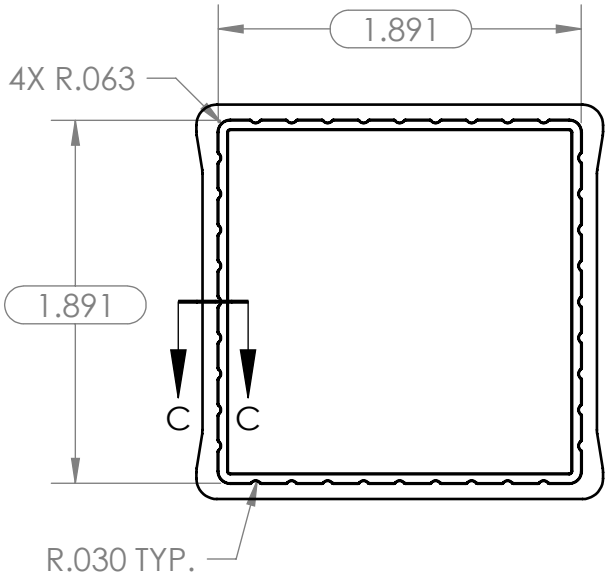
**polycase**  
1305 CHESTER IND. PARKWAY AVON, OHIO 44011-1083 U.S.A.  
PH#: 1-800-248-1233, 440-934-0444 FAX#: 440-934-0088

TOLERANCE CHART																					
DIMENSION RANGE	0	.039	.118	.236	.394	.591	.866	1.181	1.575	2.087	2.756	3.543	4.724	6.299	7.874	9.843	12.402	15.748	19.685	24.803	31.496
	.039	.118	.236	.394	.591	.866	1.181	1.575	2.087	2.756	3.543	4.724	6.299	7.874	9.843	12.402	15.748	19.685	24.803	31.496	39.37
TOOL DEPENDENT	±.007	±.007	±.008	±.008	±.009	±.010	±.011	±.012	±.013	±.015	±.017	±.020	±.024	±.028	±.035	.043	.051	.063	.079	.098	.118
NON-TOOL DEPENDENT	±.003	±.004	±.004	±.004	±.005	±.006	±.007	±.008	±.009	±.011	±.013	±.016	±.020	±.024	±.031	.039	.047	.059	.075	.094	.114

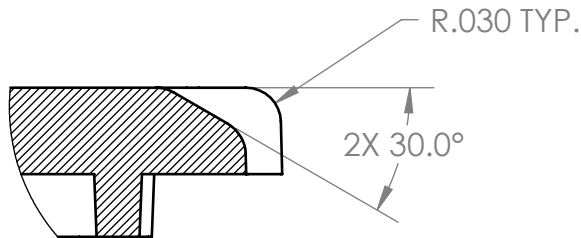


91.5°±.5° TYP.

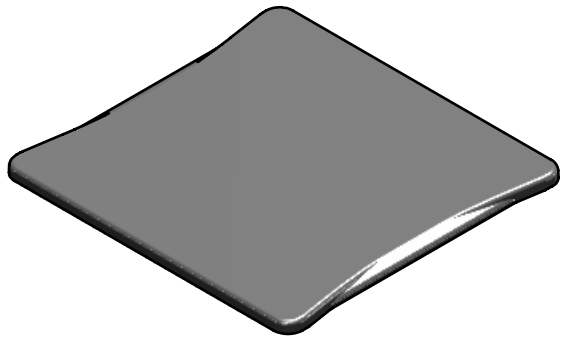
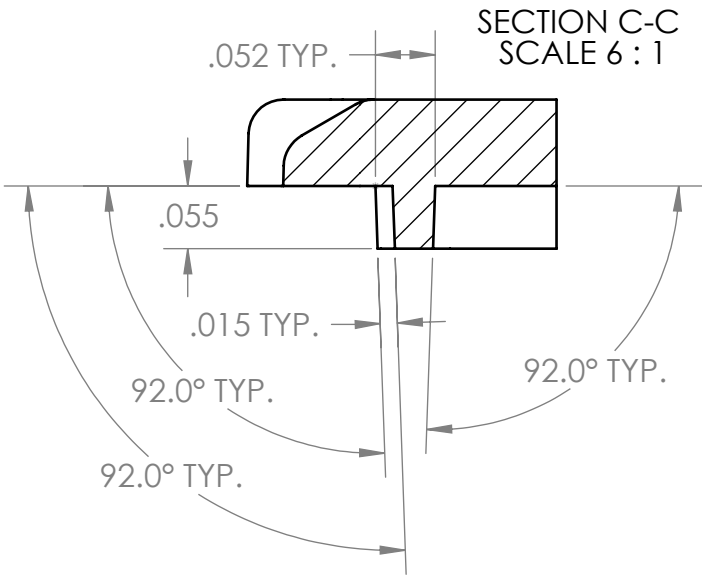
SECTION A-A



SECTION B-B



DETAIL D  
SCALE 6 : 1



UNLESS OTHERWISE SPECIFIED:  
DIMENSIONS ARE IN: INCHES [mm]  
TOLERANCES: ANGULAR: ±2°  
TWO PLACE DECIMAL: ±.030  
THREE PLACE DECIMAL: ±.015  
PRINTED GRAPHICS: ±.010

PROPRIETARY AND CONFIDENTIAL  
THE INFORMATION CONTAINED IN THIS  
DRAWING IS THE SOLE PROPERTY OF  
POLYCASE. ANY REPRODUCTION IN PART  
OR AS A WHOLE WITHOUT THE WRITTEN  
PERMISSION OF POLYCASE IS PROHIBITED.  
CAD FILE: BX-22C

PART NO.  
BX-22C  
MATERIAL  
ABS

FLAME RATING  
UL94V-0

DRAWN	NAME	DATE
CHECKED	-	8/16/2013 11/3/2010

**polycase**  
1305 CHESTER IND. PARKWAY AVON, OHIO 44011-1083 U.S.A.  
PH#: 1-800-248-1233, 440-934-0444 FAX#: 440-934-0088

SIZE <b>B</b>	BX SERIES COVER	REV -
------------------	-----------------	----------

SCALE: 1:1		SHEET 1 OF 1
------------	--	--------------

REV.	DESCRIPTION	ZONE	BY	APPR'D	DATE
REVISIONS					