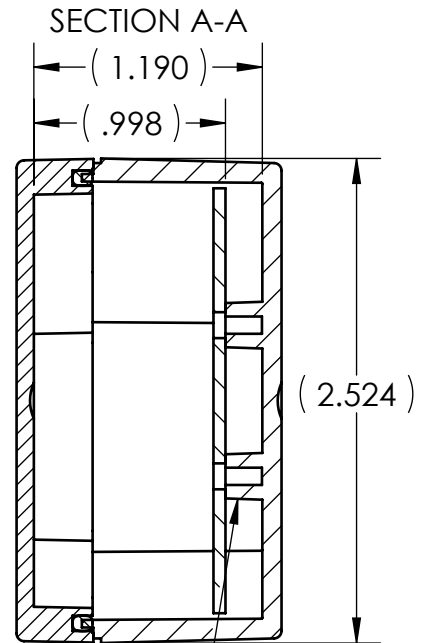
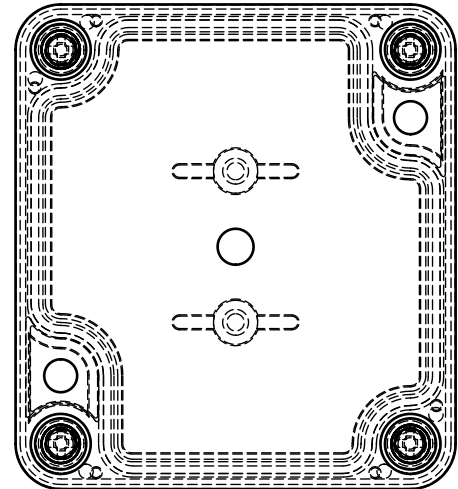
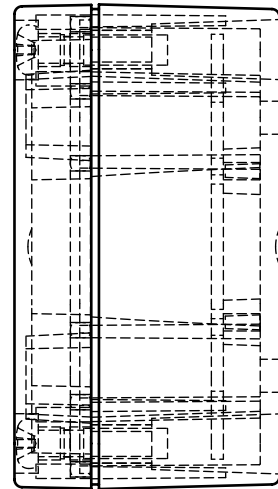
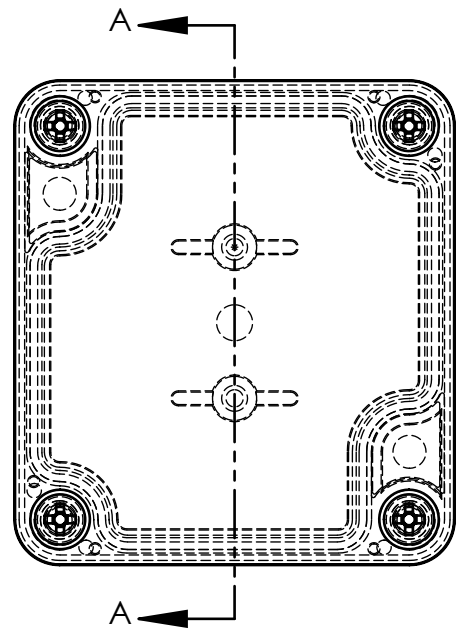
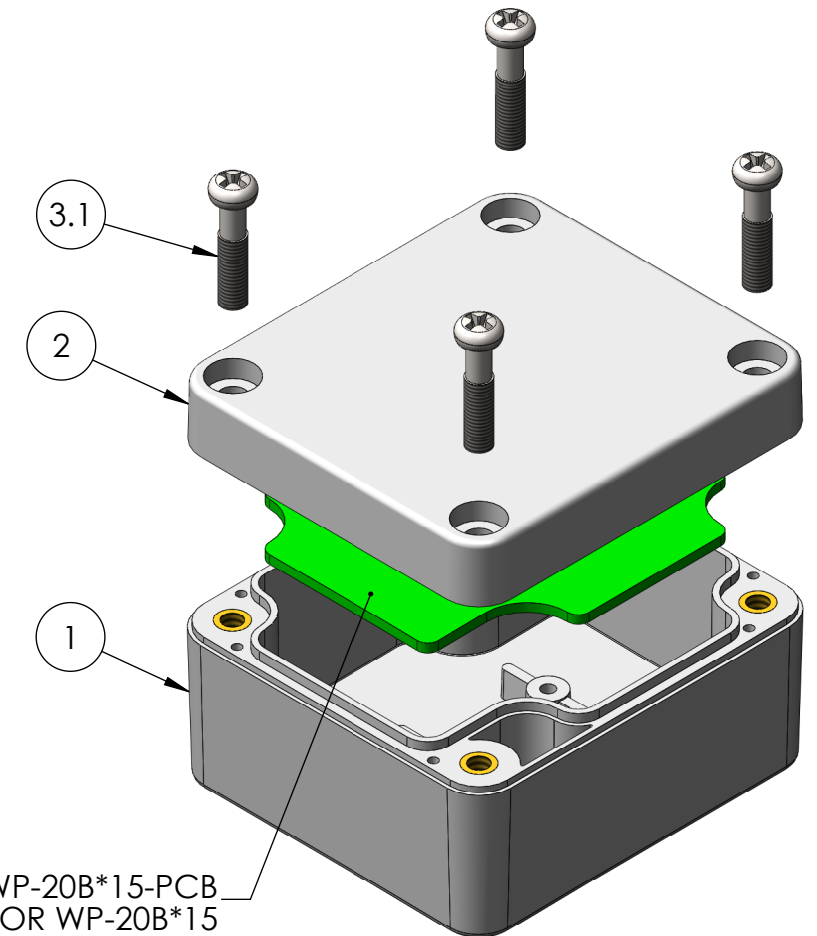
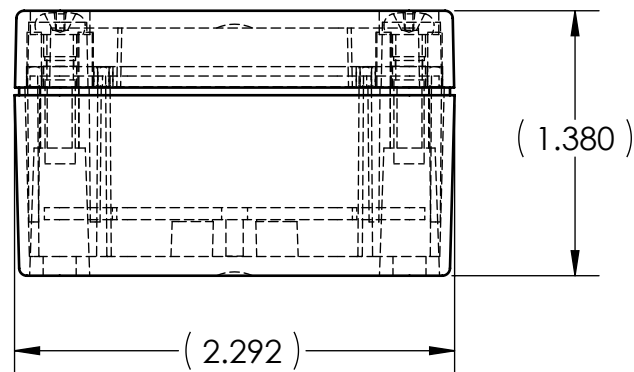


ITEM NO.	PART NUMBER	Rev.	DESCRIPTION	Material	Color	Flame Rating	QTY.
1	WP-20B*15	-	WP BASE, W/PCB MOUNTING BOSSES	POLYCARBONATE	LIGHT GRAY	UL94-HB (UL FILE E41613)	1
2	WP-20C*15	-	WP COVER ONLY, W/GASKET	POLYCARBONATE	LIGHT GRAY	UL94-HB (UL FILE E41613)	1
3	SCREWS-SSM4-20-4	-	ASSEMBLY SCREWS, 4 PACK				1
3.1	SCREWS-SSM4-20	-	M4X0.7 X 20mm OAL, PHILLIPS DRIVE MACHINE SCREW	STAINLESS STEEL			4



PCB BOSSES ACCEPT M3 METRIC OR #4 STD. THREAD FORMING SCREWS (NOT SUPPLIED)



WP-20B\*15-PCB  
PCB TEMPLATE FOR WP-20B\*15  
REF. ONLY

- NOTES:  
 1. ENCLOSURE DESIGNED TO NEMA 1, 2, 4, 4X, 12, 13.  
 2. UL LISTED TO UL508-4X SPECIFICATIONS (UL FILE E194432).  
 3. SERVICE TEMPERATURE: -40°C TO 120°C  
 4. MOUNTING FLANGE KITS ARE AVAILABLE FROM POLYCASE.

REV.	DESCRIPTION	ZONE	BY	APPR'D	DATE
-.01	UPDATED PCB BOSS NOTE		D.M.F.	D.M.F.	9/7/2011
REVISIONS					

UNLESS OTHERWISE SPECIFIED:  
 DIMENSIONS ARE IN: INCHES [mm]  
 TOLERANCES: ANGULAR: ±2°  
 TWO PLACE DECIMAL: ±.030  
 THREE PLACE DECIMAL: ±.015  
 PRINTED GRAPHICS: ±.010

PROPRIETARY AND CONFIDENTIAL  
 THE INFORMATION CONTAINED IN THIS  
 DRAWING IS THE SOLE PROPERTY OF  
 POLYCASE. ANY REPRODUCTION IN PART  
 OR AS A WHOLE WITHOUT THE WRITTEN  
 PERMISSION OF POLYCASE IS PROHIBITED.  
 CAD FILE: WP-20+15

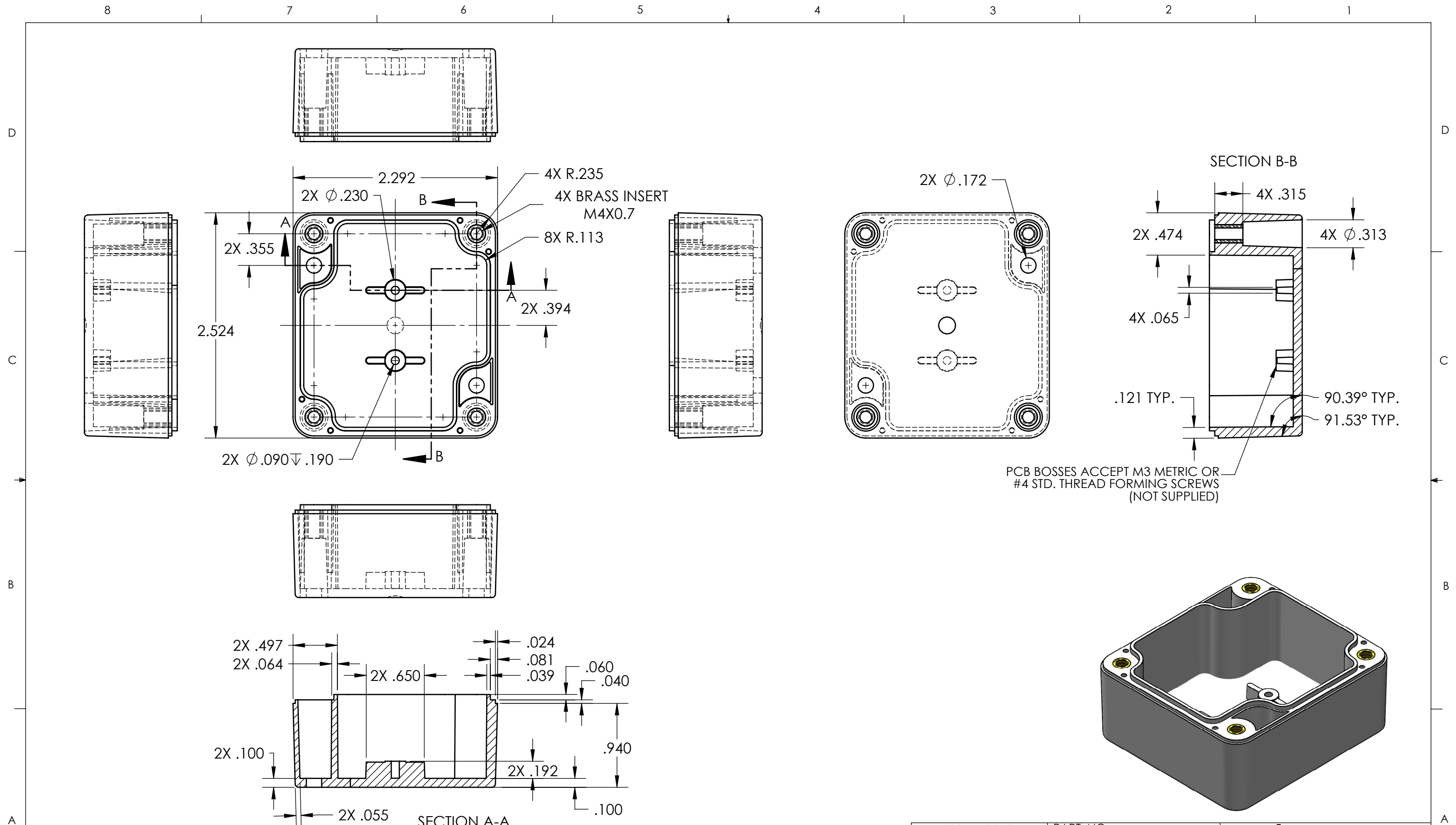
PART NO. WP-20*15		MATERIAL	
FLAME RATING UL94-HB		SIZE <b>B</b>	REV <b>-.01</b>
DRAWN	NAME D.M.F.	DATE 1/27/2011	SCALE: 1:1
CHECKED	B.M.B.	1/28/2011	

**polycase**  
 1305 CHESTER IND. PARKWAY AVON, OHIO 44011-1083 U.S.A.  
 PH#: 1-800-248-1233, 440-934-0444 FAX#: 440-934-0088

WP UNIT, W/MOUNTING BOSSES, WITH GASKET, LIGHT GRAY

⊕

SHEET 1 OF 1



NOTES:  
1. COLOR: LIGHT GRAY

REV.	DESCRIPTION	ZONE	BY	APPR'D	DATE
-.01	UPDATED PCB BOSS NOTE		D.M.F.	D.M.F.	9/7/2011

REVISIONS

UNLESS OTHERWISE SPECIFIED:  
DIMENSIONS ARE IN: INCHES [mm]  
TOLERANCES: ANGULAR: ±2°  
TWO PLACE DECIMAL: ±.030  
THREE PLACE DECIMAL: ±.015  
PRINTED GRAPHICS: ±.010

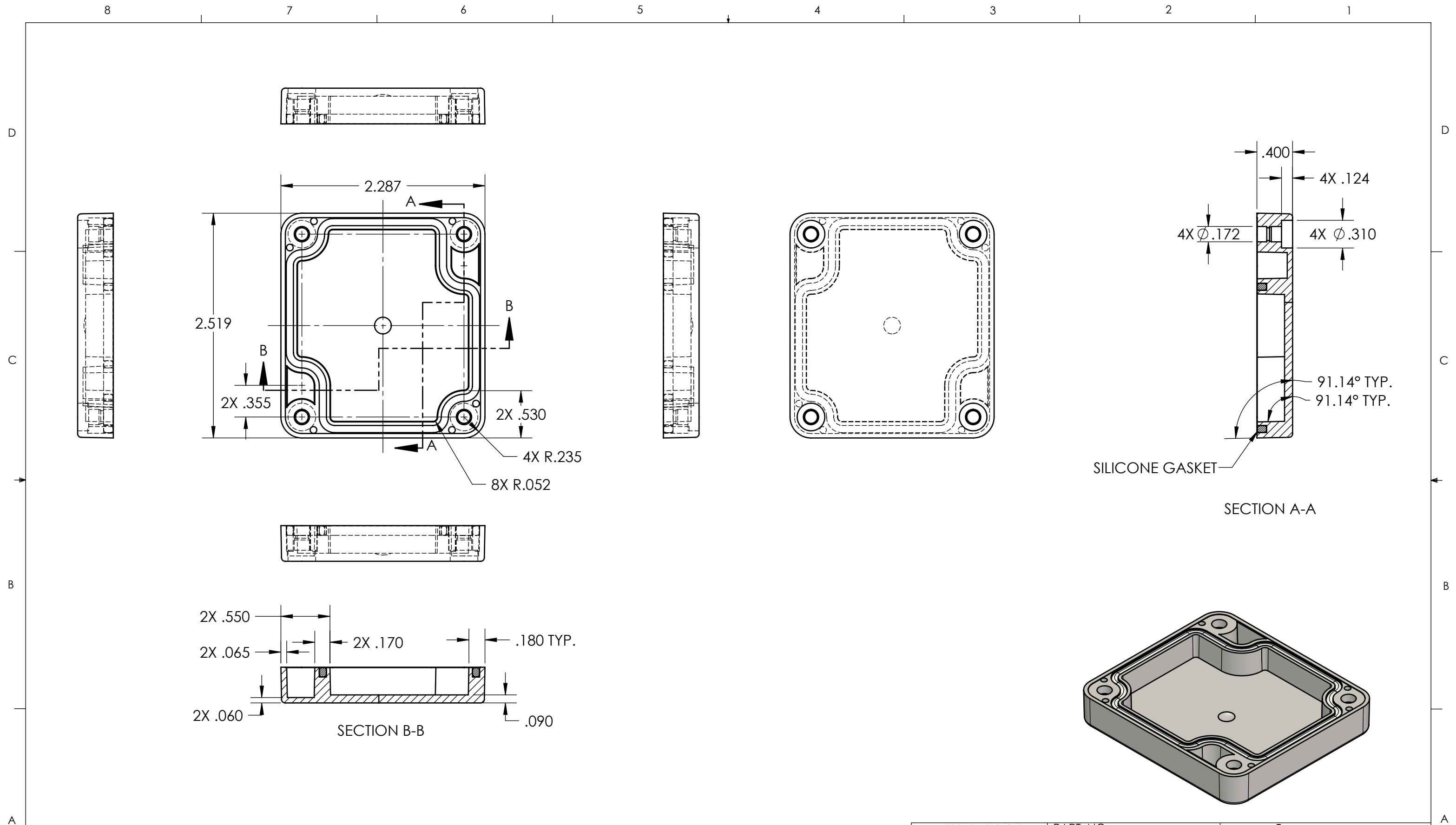
PROPRIETARY AND CONFIDENTIAL  
THE INFORMATION CONTAINED IN THIS  
DRAWING IS THE SOLE PROPERTY OF  
POLYCASE. ANY REPRODUCTION IN PART  
OR AS A WHOLE WITHOUT THE WRITTEN  
PERMISSION OF POLYCASE IS PROHIBITED.  
CAD FILE: WP-20B+15

PART NO. WP-20B*15		SIZE <b>B</b>
MATERIAL POLYCARBONATE		
FLAME RATING UL94-HB (UL FILE E41613)		SCALE: 1:1
DRAWN	NAME	DATE
CHECKED	B.M.B.	1/28/2011

**polycase**  
1305 CHESTER IND. PARKWAY AVON, OHIO 44011-1083 U.S.A.  
PH#: 1-800-248-1233, 440-934-0444 FAX#: 440-934-0088


WP BASE, W/PCB MOUNTING BOSSES	REV <b>-.01</b>
--------------------------------	--------------------

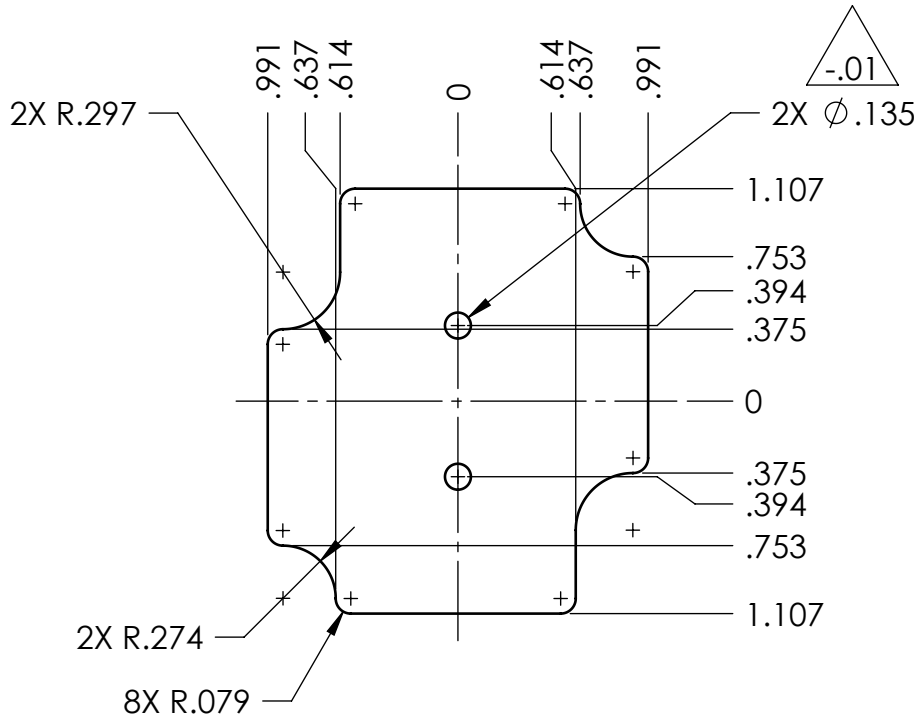
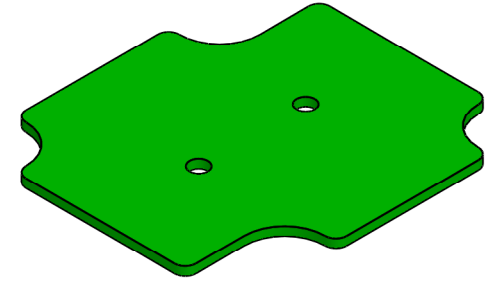
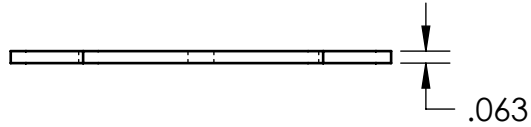
SHEET 1 OF 1



NOTES:  
1. COLOR: LIGHT GRAY

REV.	DESCRIPTION	ZONE	BY	APPR'D	DATE
REVISIONS					

UNLESS OTHERWISE SPECIFIED: DIMENSIONS ARE IN: INCHES [mm] TOLERANCES: ANGULAR: ±2° TWO PLACE DECIMAL: ±.030 THREE PLACE DECIMAL: ±.015 PRINTED GRAPHICS: ±.010		PART NO. WP-20C*15		 <small>1305 CHESTER IND. PARKWAY AVON, OHIO 44011-1083 U.S.A. PH#: 1-800-248-1233, 440-934-0444 FAX#: 440-934-0088</small>	
PROPRIETARY AND CONFIDENTIAL THE INFORMATION CONTAINED IN THIS DRAWING IS THE SOLE PROPERTY OF POLYCASE. ANY REPRODUCTION IN PART OR AS A WHOLE WITHOUT THE WRITTEN PERMISSION OF POLYCASE IS PROHIBITED. CAD FILE: WP-20C+15		MATERIAL POLYCARBONATE			
FLAME RATING UL94-HB (UL FILE E41613)		SIZE <b>B</b>		WP COVER ONLY, W/GASKET	
DRAWN D.M.F. 3/31/2010		NAME DATE		REV -	
CHECKED B.M.B. 1/28/2011		SCALE: 1:1		SHEET 1 OF 1	



NOTES:

1. INCLUDES .030 CLEARANCE FROM INTERIOR OF WP-20B\*15.

UNLESS OTHERWISE SPECIFIED: DIMENSIONS ARE IN: INCHES[mm] TOLERANCES: ANGULAR: $\pm 2^\circ$ TWO PLACE DECIMAL: $\pm .010$ THREE PLACE DECIMAL: $\pm .005$ PRINTED GRAPHICS: $\pm .010$						PART NO. WP-20B*15-PCB		 <small>1305 CHESTER IND. PARKWAY AVON, OHIO 44011-1083 U.S.A. PH#: 1-800-248-1233, 440-934-0444 FAX#: 440-934-0088</small>					
PROPRIETARY AND CONFIDENTIAL THE INFORMATION CONTAINED IN THIS DRAWING IS THE SOLE PROPERTY OF POLYCASE. ANY REPRODUCTION IN PART OR AS A WHOLE WITHOUT THE WRITTEN PERMISSION OF POLYCASE IS PROHIBITED. CAD FILE: WP-20B*15-PCB						MATERIAL					FLAME RATING		SIZE <b>A</b>
-.01	$\phi$ .135 WAS $\phi$ .125		D.M.F.	D.M.F.	9/7/2011			DRAWN D.M.F. 1/27/2011		SCALE: 1:1		SHEET 1 OF 1	
REV.	DESCRIPTION	ZONE	BY	APPR'D	DATE			CHECKED B.M.B. 1/28/2011					

5

4

3

2

1

D

C

B

A

Enable 3D View