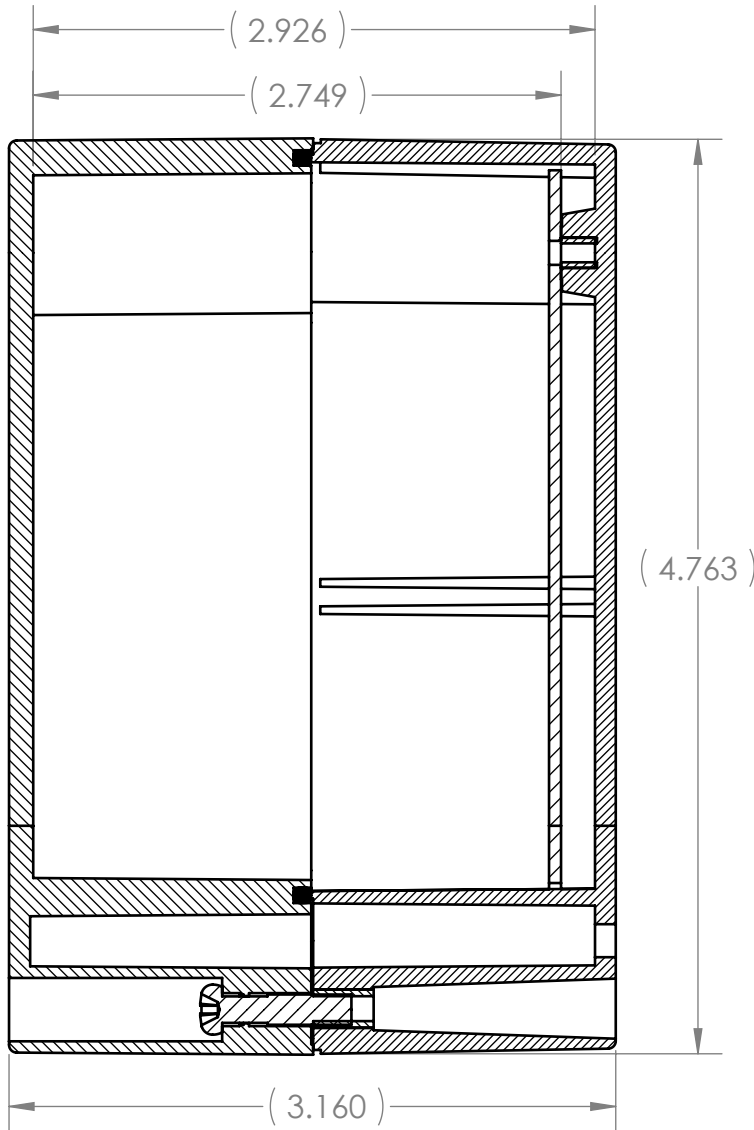
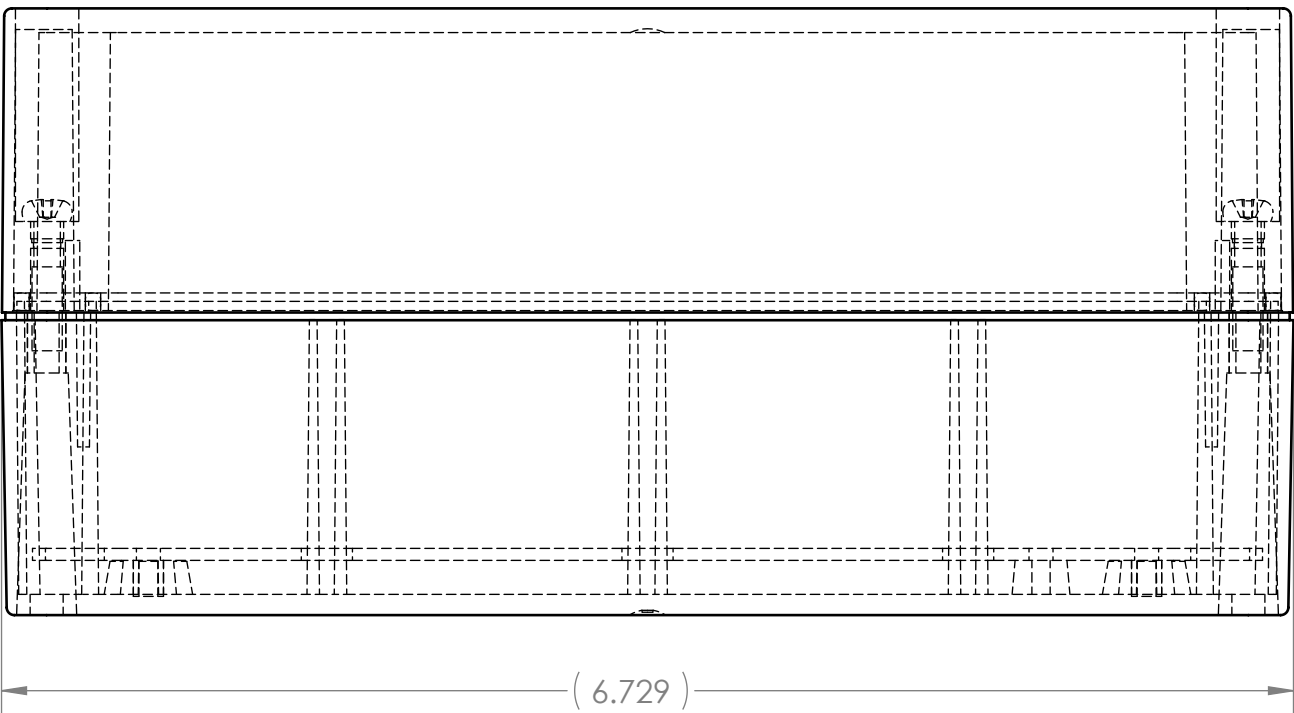
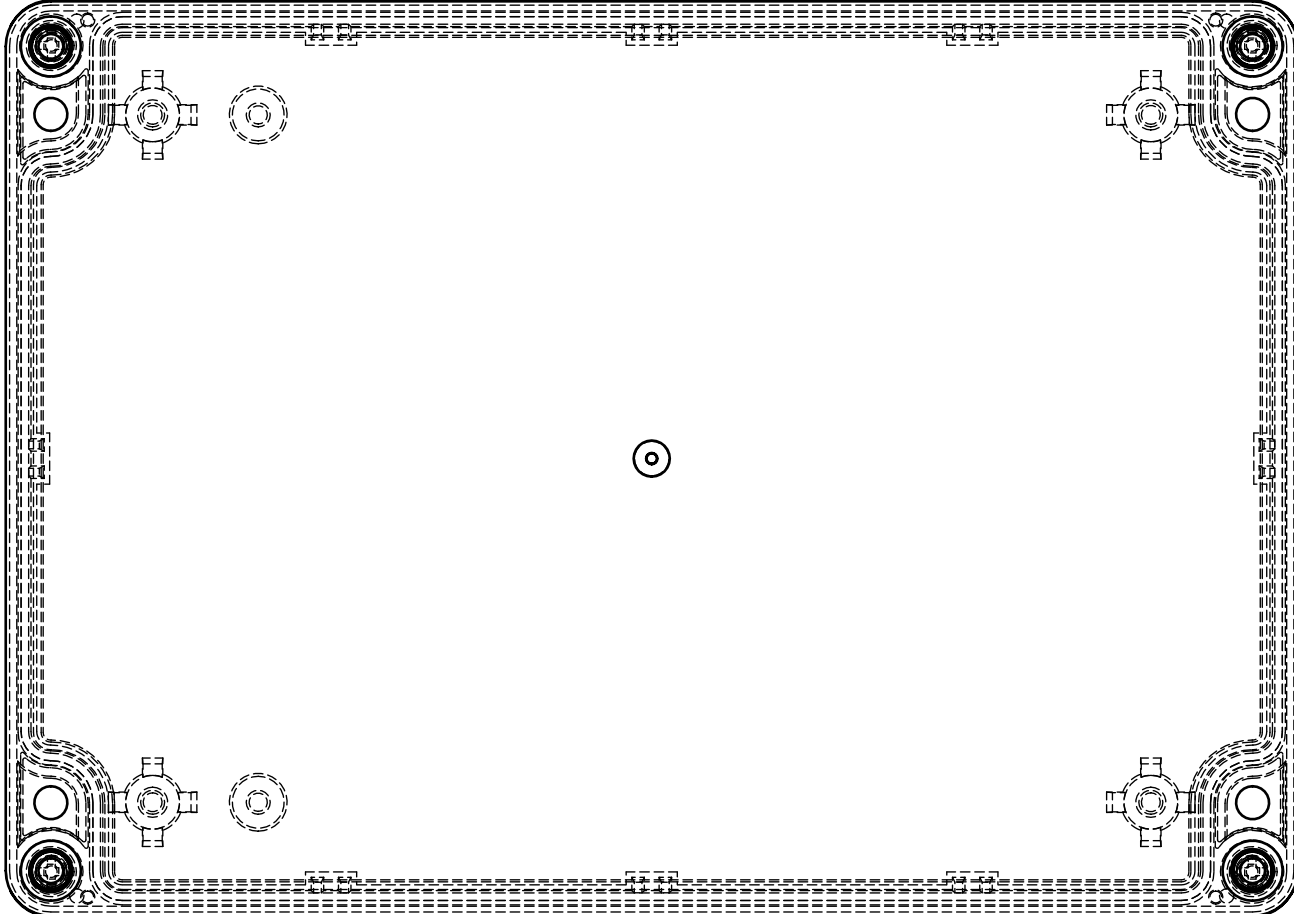
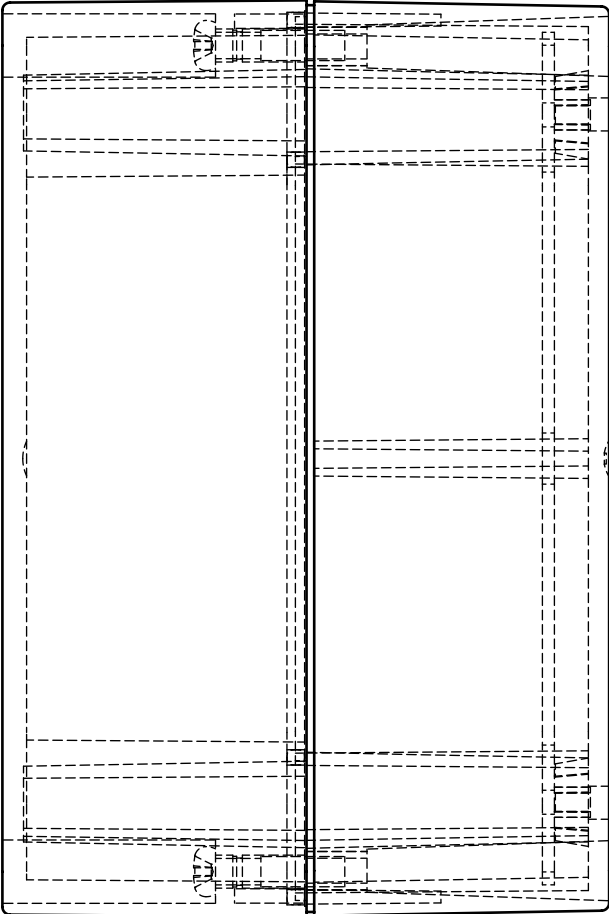
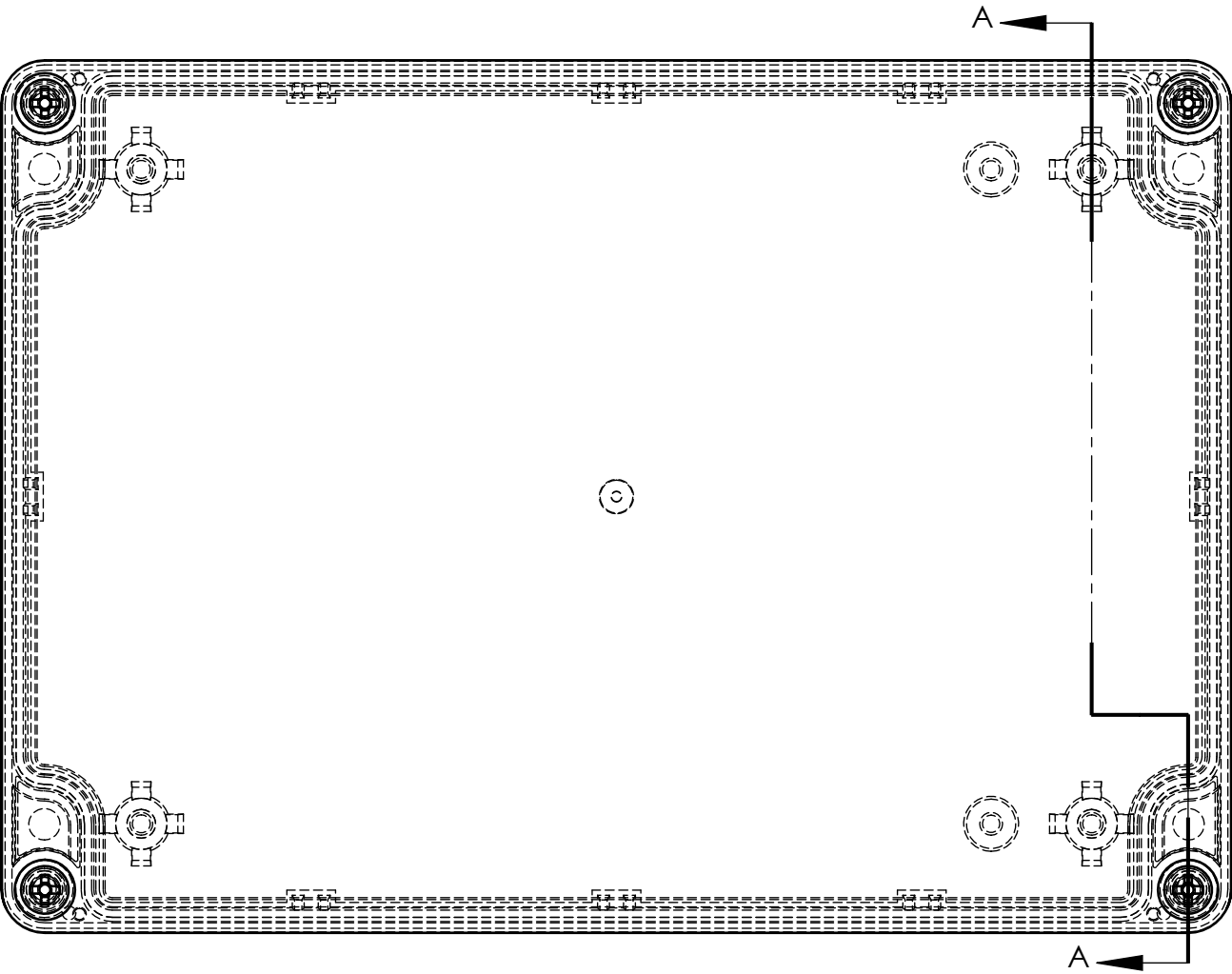
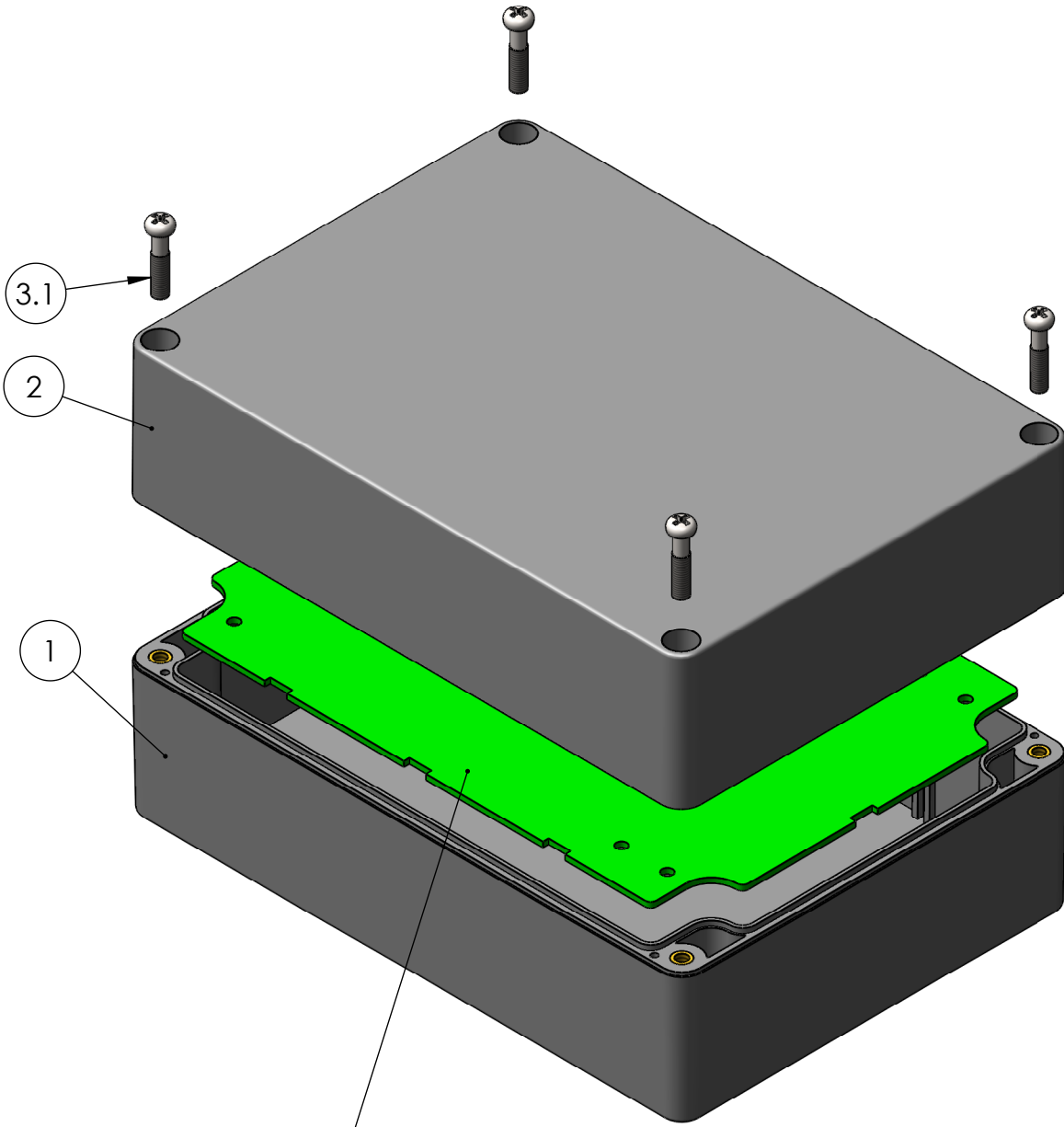


ITEM NO.	PART NUMBER	DESCRIPTION	Material	Color	FlameRating	QTY.
1	WA-24B*16	WA BASE, W/MOUNTING BOSSES	ABS	DARK GRAY	UL94-HB (UL FILE E56070)	1
2	WA-27C*16	WA COVER, W/GASKET	ABS	DARK GRAY	UL94-HB (UL FILE E56070)	1
3	SCREWS-SSM4-20-4	ASSEMBLY SCREWS, 4 PACK				1
3.1	SCREWS-SSM4-20	M4X0.7 X 20mm OAL, PHILLIPS DRIVE MACHINE SCREW	STAINLESS STEEL			4





SECTION A-A

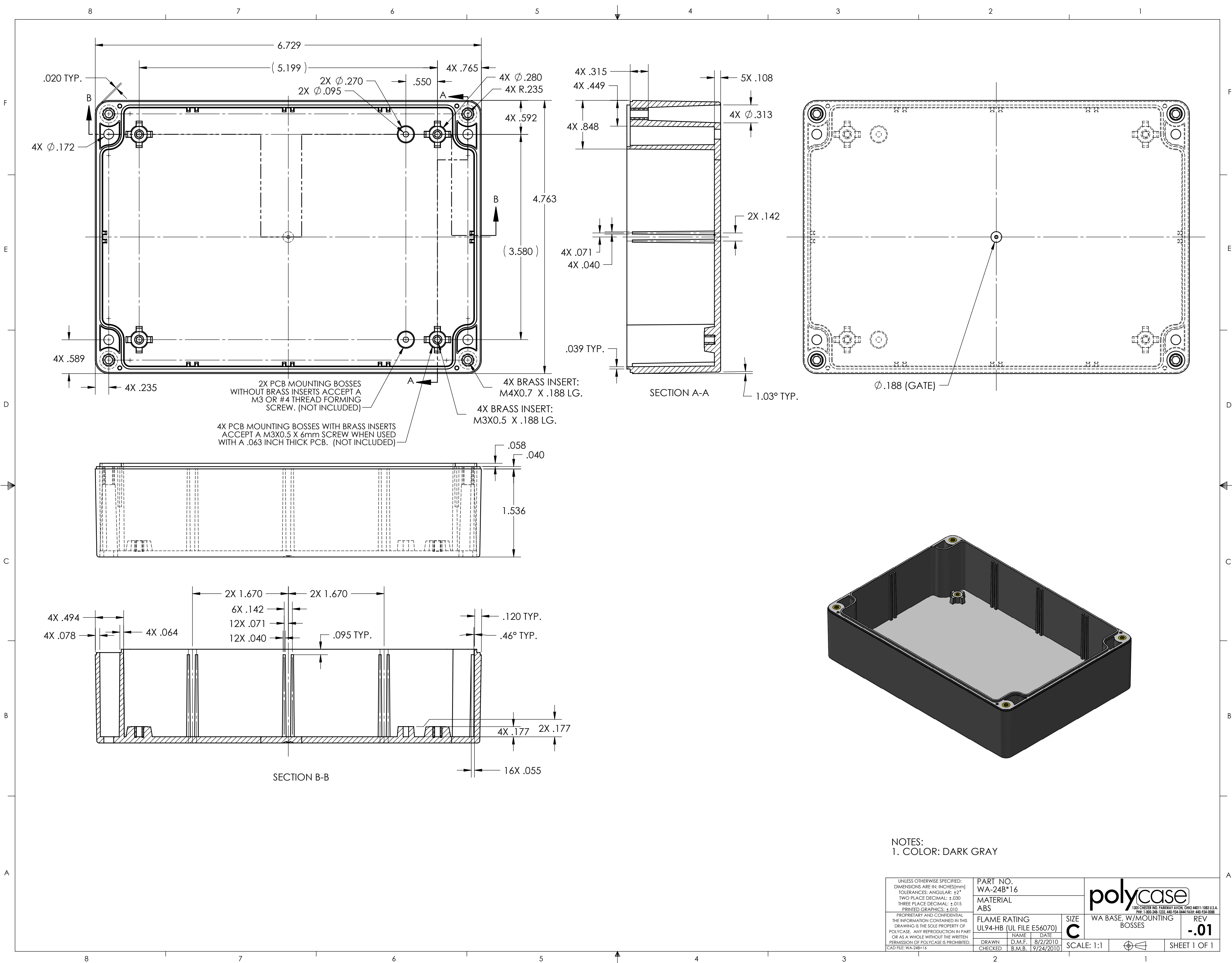


WA-24B\*16-PCB (REF. ONLY):  
PCB TEMPLATE FOR WA-24B\*16


- NOTES:
1. SERVICE TEMPERATURE RANGE: -40°C TO 80°C
  2. DESIGNED TO NEMA 1, 2, 4, 4X, 12, 13
  3. MOUNTING FLANGE KITS ARE AVAILABLE FROM POLYCASE.
  4. UL LISTED TO UL508-4X SPECIFICATIONS (UL FILE #E194432).

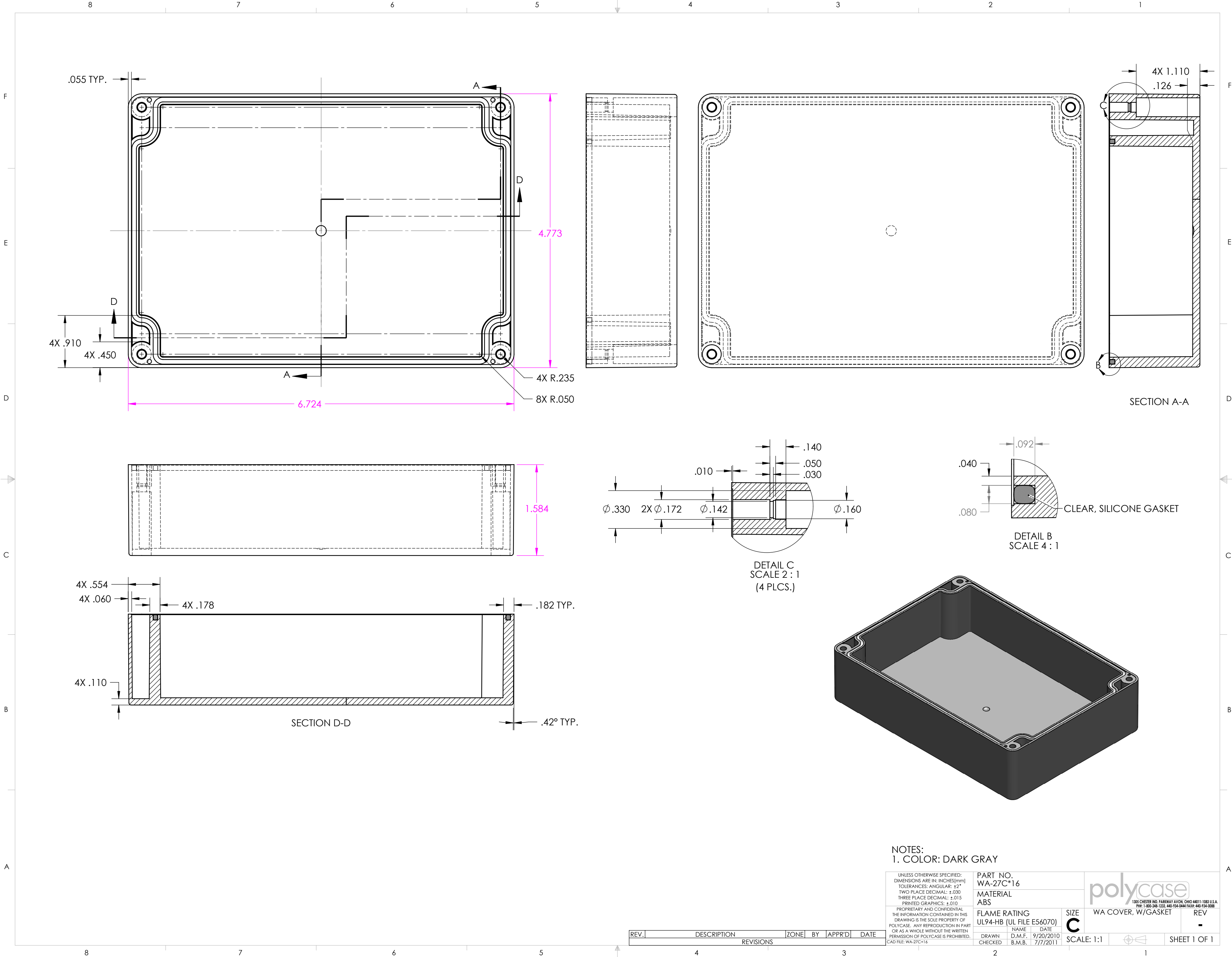
REV.	DESCRIPTION	ZONE	BY	APPR'D	DATE
REVISIONS					

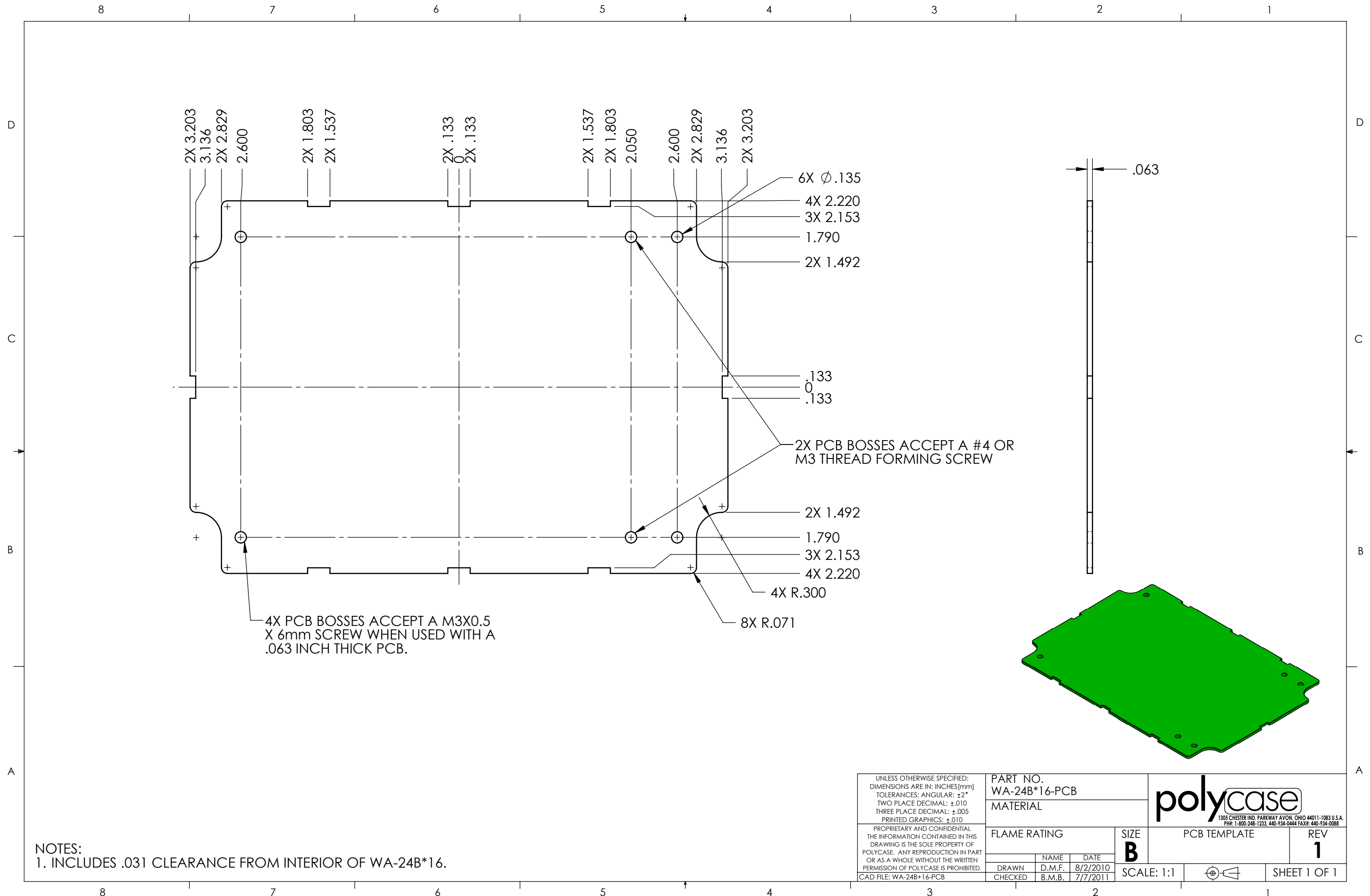
UNLESS OTHERWISE SPECIFIED: DIMENSIONS ARE IN: INCHES[mm] TOLERANCES: ANGULAR: ±2° TWO PLACE DECIMAL: ±.030 THREE PLACE DECIMAL: ±.015 PRINTED GRAPHICS: ±.010		PART NO. WA-27*16		 1305 CHESTER RD. PARKWAY AVON, OHIO 44011-1083 U.S.A. PH: 1-800-548-1233 440-934-0444 FAX: 440-934-0088	
PROPRIETARY AND CONFIDENTIAL THE INFORMATION CONTAINED IN THIS DRAWING IS THE SOLE PROPERTY OF POLYCASE. ANY REPRODUCTION IN PART OR AS A WHOLE WITHOUT THE WRITTEN PERMISSION OF POLYCASE IS PROHIBITED. CAD FILE: WA-27*16		MATERIAL			
FLAME RATING UL94-HB		SIZE C		WA UNIT, W/MOUNTING BOSSES, WITH GASKET, DARK GRAY	
DRAWN CHECKED		NAME D.M.F. B.M.B.		DATE 9/21/2010 7/7/2011	
SCALE: 1:1				SHEET 1 OF 1	



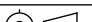
NOTES:  
1. COLOR: DARK GRAY

<div>UNLESS OTHERWISE SPECIFIED: DIMENSIONS ARE IN: INCHES[mm] TOLERANCES: ANGULAR: ±2° TWO PLACE DECIMAL: ±.030 THREE PLACE DECIMAL: ±.015 PRINTED GRAPHICS: ±.010  PROPRIETARY AND CONFIDENTIAL THE INFORMATION CONTAINED IN THIS DRAWING IS THE SOLE PROPERTY OF POLYCASE. ANY REPRODUCTION IN PART OR AS A VALUE WITHOUT THE WRITTEN PERMISSION OF POLYCASE IS PROHIBITED. CAD FILE: WA-24B*16</div>	PART NO. WA-24B*16		<div>polycase</div> <div>1305 CHESTER RD. PARKWAY AVON, OHIO 44011-1083 U.S.A. PH: 1-800-248-1233, 440-934-0444 FAX: 440-934-0088</div>		
	MATERIAL ABS				
	FLAME RATING UL94-HB (UL FILE E56070)		SIZE C	WA BASE, W/MOUNTING BOSSES	REV -01
	DRAWN CHECKED		NAME DATE D.M.F. B.M.B.		8/2/2010 9/24/2010
	SCALE: 1:1				SHEET 1 OF 1





NOTES:  
1. INCLUDES .031 CLEARANCE FROM INTERIOR OF WA-24B\*16.

UNLESS OTHERWISE SPECIFIED: DIMENSIONS ARE IN: INCHES [mm] TOLERANCES: ANGULAR: ±2° TWO PLACE DECIMAL: ±.010 THREE PLACE DECIMAL: ±.005 PRINTED GRAPHICS: ±.010	PART NO. WA-24B*16-PCB			<div><div>polycase</div><div>1305 CHESTER IND. PARKWAY AVON, OHIO 44011-1083 U.S.A. PH#: 1-800-248-1233, 440-934-0444 FAX#: 440-934-0088</div></div>		
	MATERIAL					
PROPRIETARY AND CONFIDENTIAL THE INFORMATION CONTAINED IN THIS DRAWING IS THE SOLE PROPERTY OF POLYCASE. ANY REPRODUCTION IN PART OR AS A WHOLE WITHOUT THE WRITTEN PERMISSION OF POLYCASE IS PROHIBITED. CAD FILE: WA-24B*16-PCB	FLAME RATING			SIZE <b>B</b>	PCB TEMPLATE	REV <b>1</b>
		NAME	DATE			
	DRAWN	D.M.F.	8/2/2010	SCALE: 1:1		SHEET 1 OF 1
	CHECKED	B.M.B.	7/7/2011			