

F

E

D

C

B

A

F

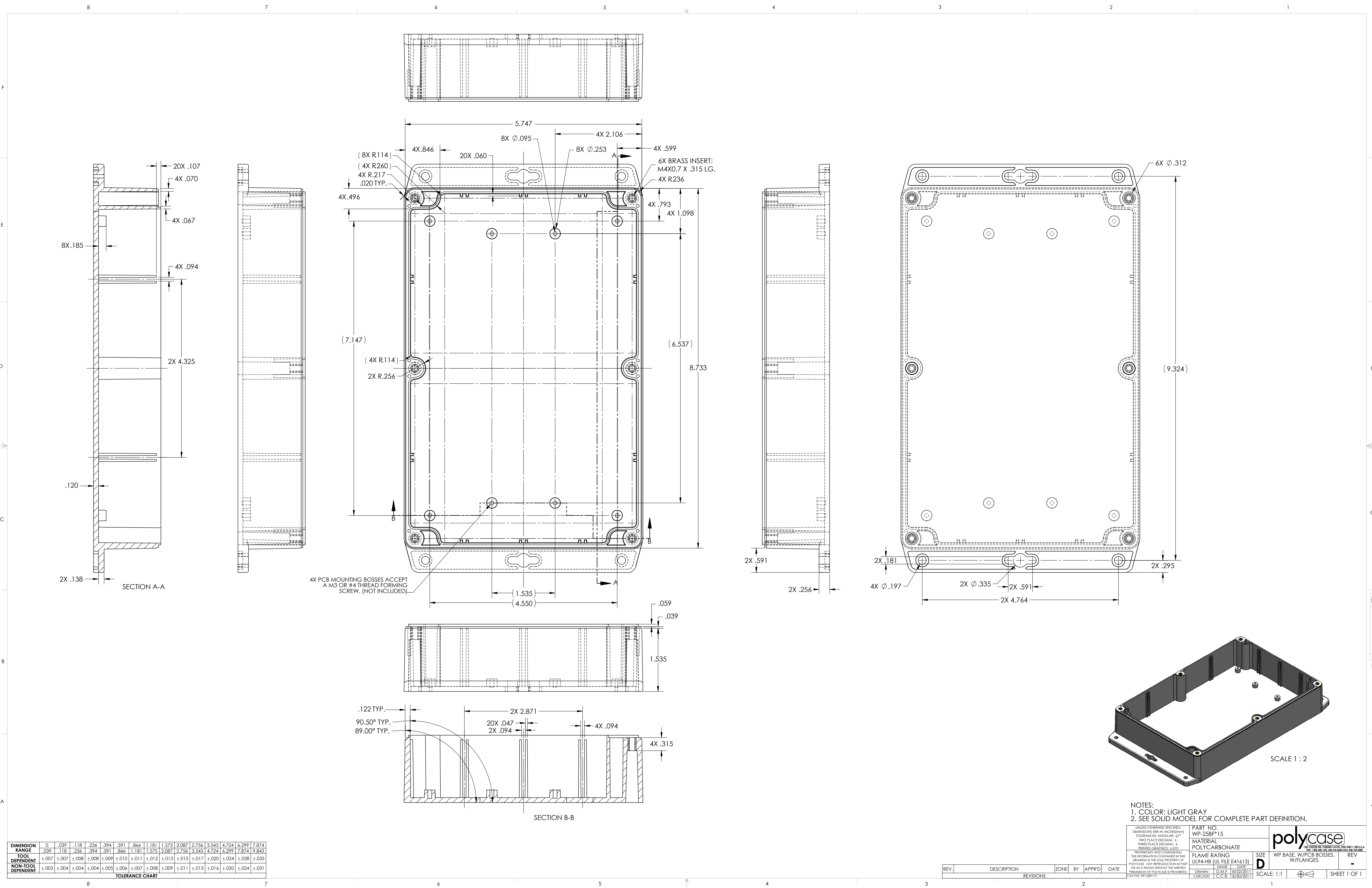
E

D

C

B

A



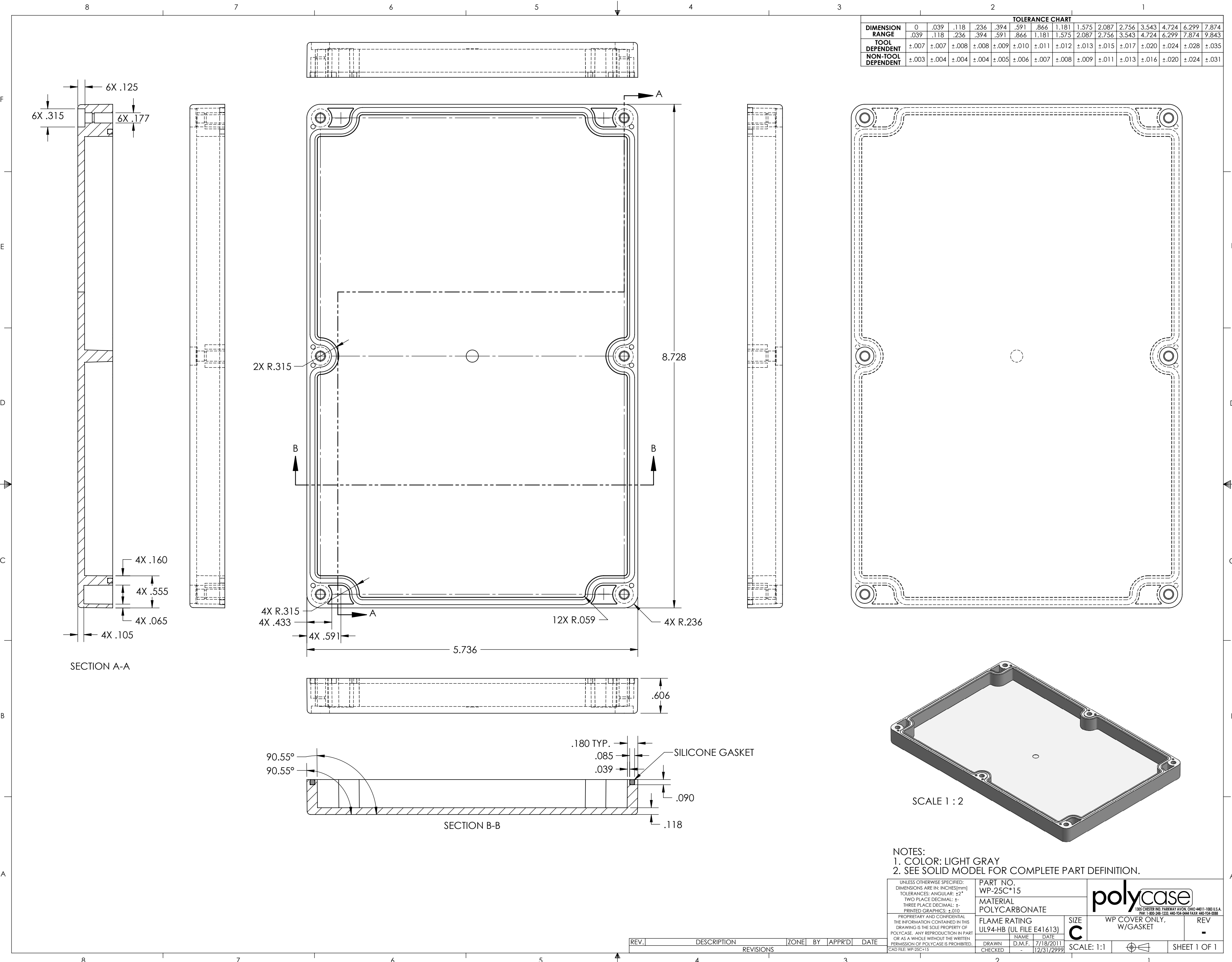
DIMENSION RANGE	0	.039	.118	.236	.394	.591	.866	1.181	1.575	2.087	2.756	3.543	4.724	6.299	7.874
TOOL DEPENDENT	±.007	±.007	±.008	±.008	±.009	±.010	±.011	±.012	±.013	±.015	±.017	±.020	±.024	±.028	±.035
NON-TOOL DEPENDENT	±.003	±.004	±.004	±.004	±.005	±.006	±.007	±.008	±.009	±.011	±.013	±.016	±.020	±.024	±.031
TOLERANCE CHART															

- NOTES:
1. COLOR: LIGHT GRAY
2. SEE SOLID MODEL FOR COMPLETE PART DEFINITION.

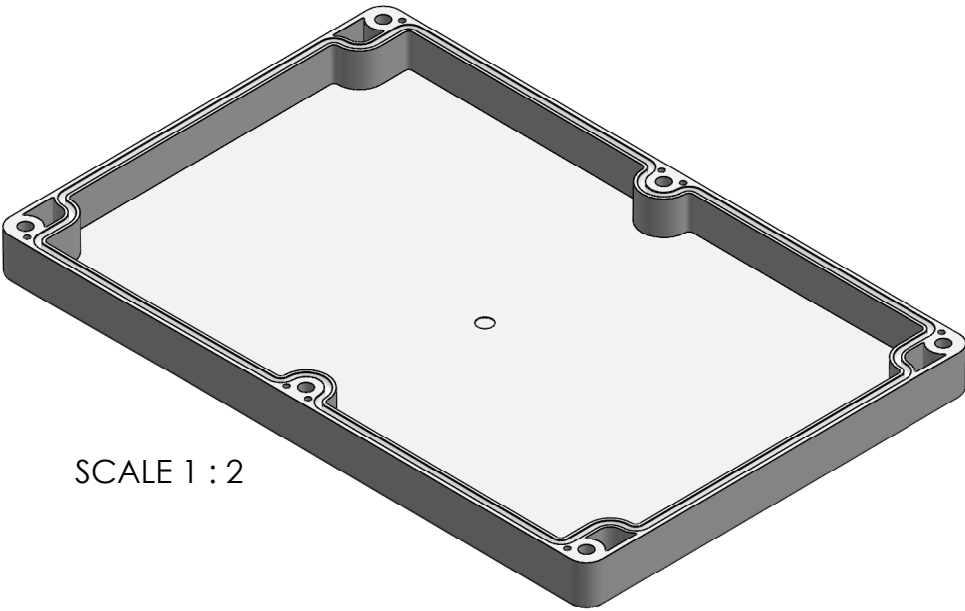
UNLESS OTHERWISE SPECIFIED: DIMENSIONS ARE IN INCHES(MM) TOLERANCES: ANGULAR: 12° TWO PLACE DECIMAL: ± THREE PLACE DECIMAL: ± PRINTED GRAPHICS: 1:100				PART NO. WP-25BF*15		MATERIAL POLYCARBONATE		FLAME RATING UL94-HB (UL FILE E41613)		SIZE D		WP BASE, W/PCB BOSSSES, W/FLANGES		REV -	
PROPERTY AND CONFIDENTIALITY THE INFORMATION CONTAINED IN THIS DRAWING IS THE SOLE PROPERTY OF POLYCASE. ANY REPRODUCTION IN PART OR AS A WHOLE WITHOUT THE WRITTEN PERMISSION OF POLYCASE IS PROHIBITED. (CART FILE: WP-25BF*15)				DRAWN D.M.F.		DATE 8/22/2011		CHECKED C.C.B.		SCALE: 1:1		SHEET 1 OF 1			

REV.	DESCRIPTION	ZONE	BY	APPRD	DATE
REVISIONS					



SCALE 1 : 2



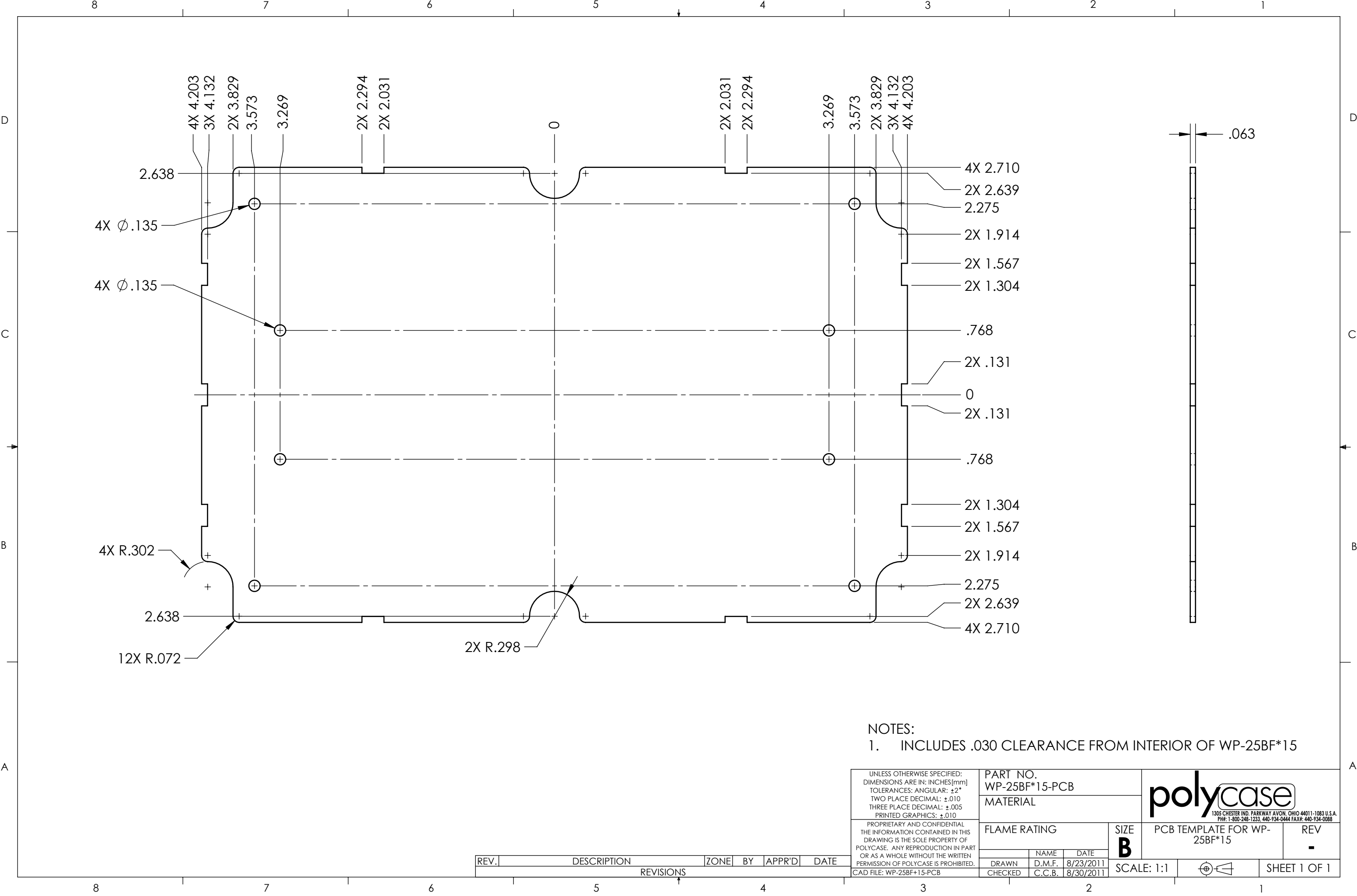
TOLERANCE CHART																
DIMENSION RANGE	0	.039	.118	.236	.394	.591	.866	1.181	1.575	2.087	2.756	3.543	4.724	6.299	7.874	9.874
TOOL DEPENDENT	±.007	±.007	±.008	±.008	±.009	±.010	±.011	±.012	±.013	±.015	±.017	±.020	±.024	±.028	±.035	
NON-TOOL DEPENDENT	±.003	±.004	±.004	±.004	±.005	±.006	±.007	±.008	±.009	±.011	±.013	±.016	±.020	±.024	±.031	





- NOTES:
1. COLOR: LIGHT GRAY
2. SEE SOLID MODEL FOR COMPLETE PART DEFINITION.

UNLESS OTHERWISE SPECIFIED: DIMENSIONS ARE IN: INCHES[mm] TOLERANCES: ANGULAR: ±2° TWO PLACE DECIMAL: ± THREE PLACE DECIMAL: ± PRINTED GRAPHICS: ±.010		PART NO. WP-25C*15		 <small>1305 CHESTER RD. PARKWAY AVON, OHIO 44011-1083 U.S.A. PH: 1-800-248-1233 440-934-0444 FAX: 440-934-0088</small>		
PROPRIETARY AND CONFIDENTIAL THE INFORMATION CONTAINED IN THIS DRAWING IS THE SOLE PROPERTY OF POLYCASE. ANY REPRODUCTION IN PART OR AS A WHOLE WITHOUT THE WRITTEN PERMISSION OF POLYCASE IS PROHIBITED.		MATERIAL POLYCARBONATE				
FLAME RATING UL94-HB (UL FILE E41613)		SIZE C		WP COVER ONLY, W/GASKET		REV -
DRAWN CHECKED		NAME D.M.F.		DATE 7/18/2011		SCALE: 1:1 
CAD FILE: WP-25C*15		CHECKED -		12/31/2999		
SHEET 1 OF 1						

REV.	DESCRIPTION	ZONE	BY	APPR'D	DATE
REVISIONS					



- NOTES:
- INCLUDES .030 CLEARANCE FROM INTERIOR OF WP-25BF*15

UNLESS OTHERWISE SPECIFIED: DIMENSIONS ARE IN: INCHES[mm] TOLERANCES: ANGULAR: ±2° TWO PLACE DECIMAL: ±.010 THREE PLACE DECIMAL: ±.005 PRINTED GRAPHICS: ±.010	PART NO. WP-25BF*15-PCB		<div><div>1305 CHESTER IND. PARKWAY AVON, OHIO 44011-1083 U.S.A. PH#: 1-800-248-1233, 440-934-0444 FAX#: 440-934-0088</div></div>			
	MATERIAL					
	PROPRIETARY AND CONFIDENTIAL THE INFORMATION CONTAINED IN THIS DRAWING IS THE SOLE PROPERTY OF POLYCASE. ANY REPRODUCTION IN PART OR AS A WHOLE WITHOUT THE WRITTEN PERMISSION OF POLYCASE IS PROHIBITED. CAD FILE: WP-25BF*15-PCB	FLAME RATING		SIZE B	PCB TEMPLATE FOR WP- 25BF*15	
		NAME	DATE			
DRAWN		D.M.F.	8/23/2011			
CHECKED		C.C.B.	8/30/2011	SCALE: 1:1		SHEET 1 OF 1

REV.	DESCRIPTION	ZONE	BY	APPR'D	DATE
REVISIONS					

SCALE: 1:1



SHEET 1 OF 1

Enable 3D View