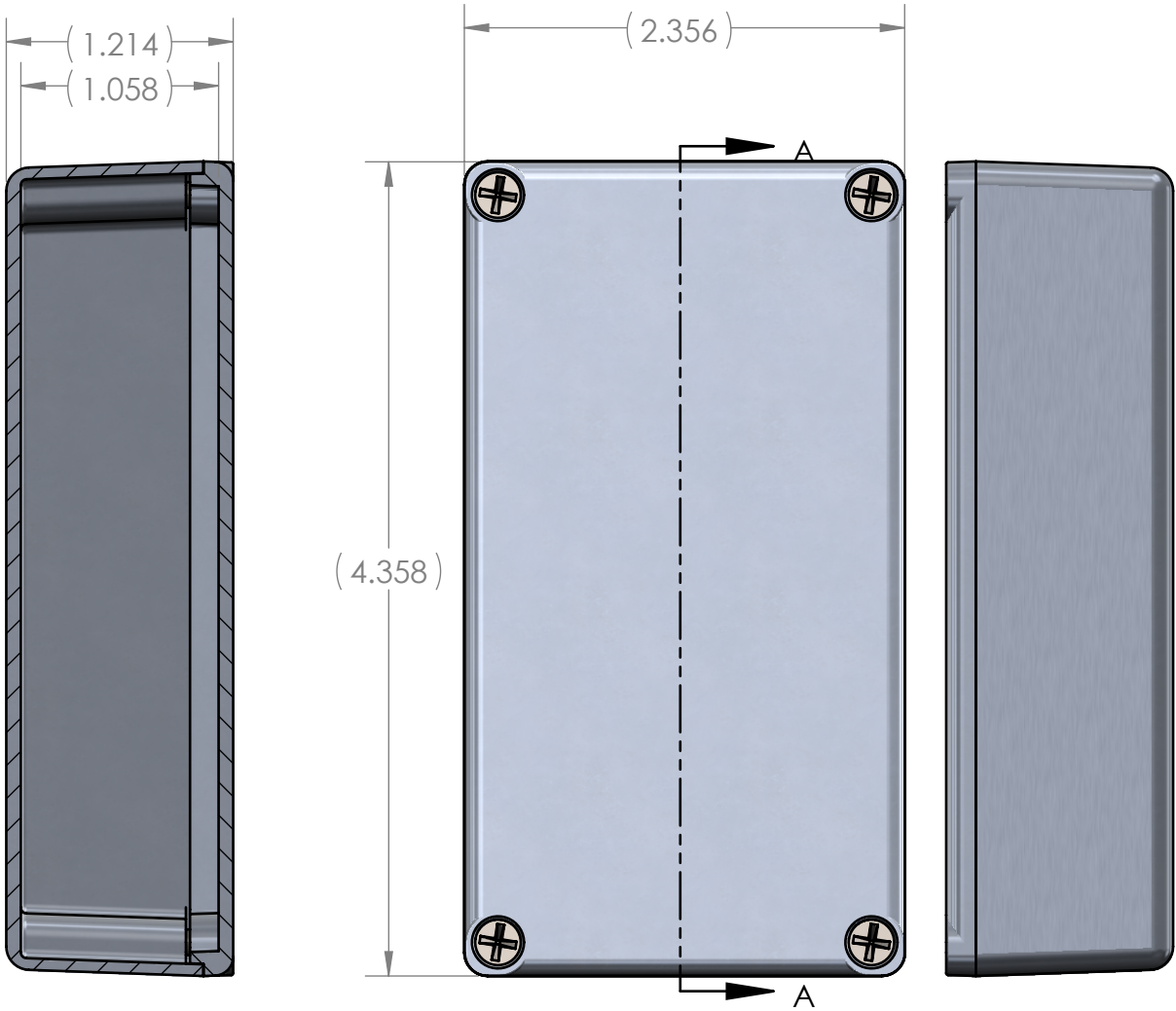
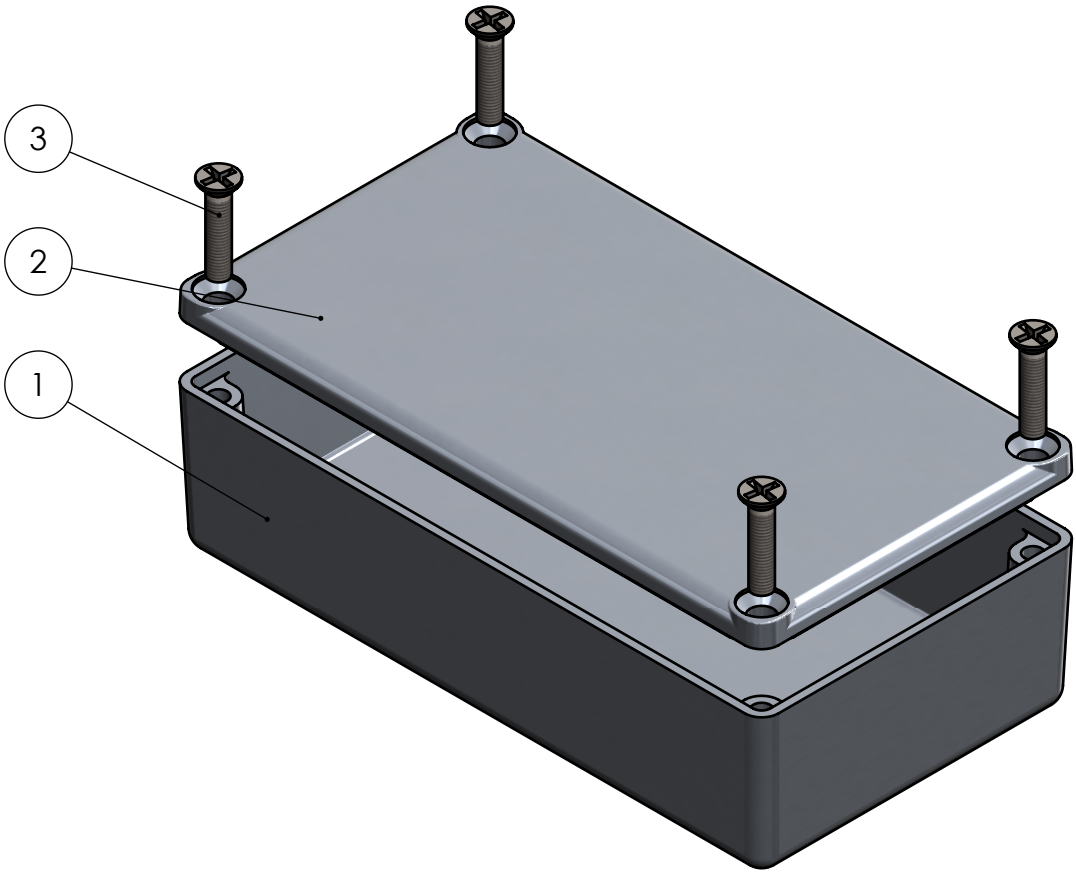


BOM Table						
ITEM NO.	PART NUMBER	Rev.	Description	Material	Color	QTY.
1	AL-24BP-01	-	Die Cast Aluminum Base	ALUMINUM ADC12	NATURAL	1
2	AL-24C-01	-	Die Cast Aluminum Cover	ALUMINUM ADC12	NATURAL	1
3	SCREWS-045		#6-32 X .625 TRILOBE, CROSS, FHMS	ZINC STEEL		4



SECTION A-A

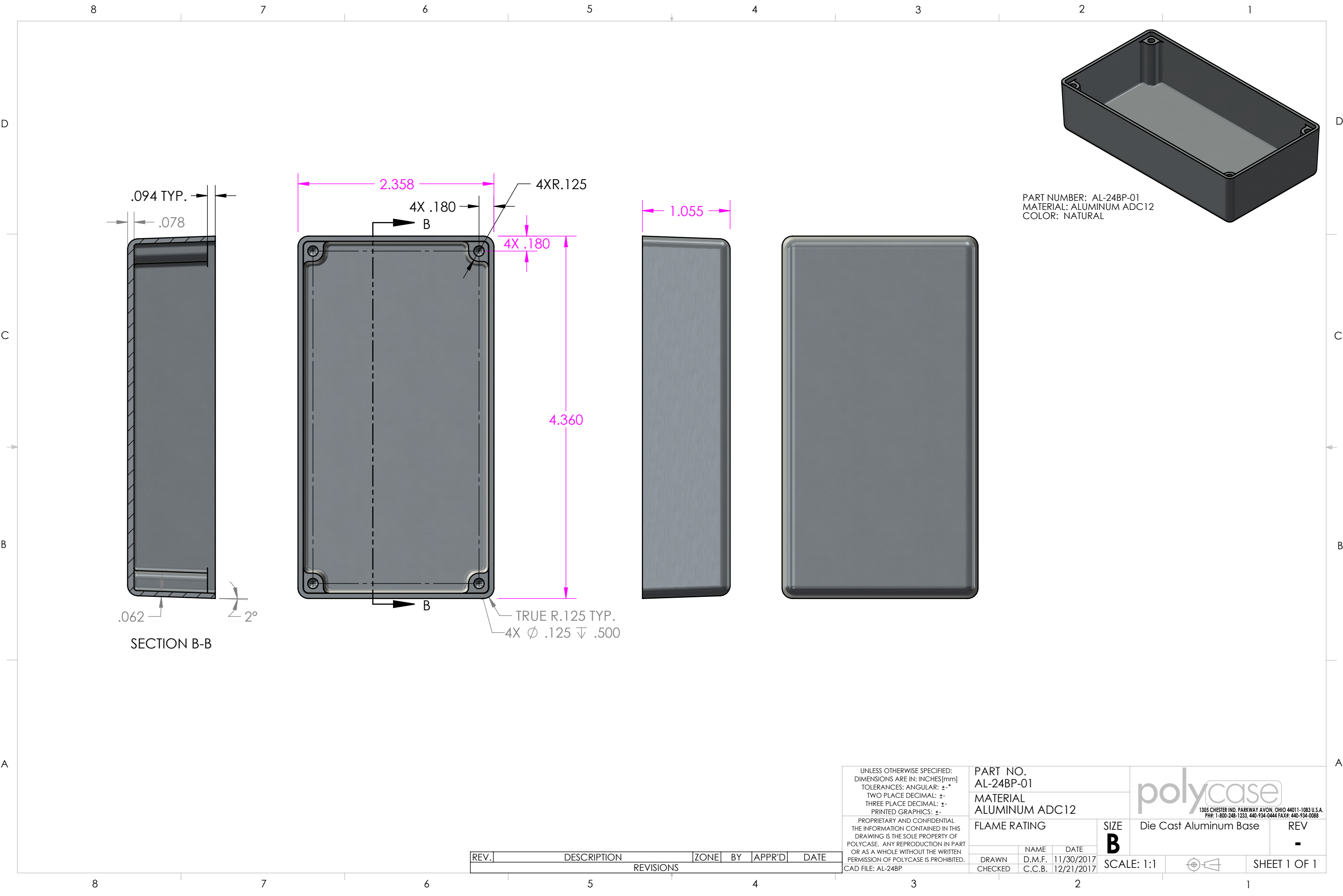




UNLESS OTHERWISE SPECIFIED:  
DIMENSIONS ARE IN: INCHES [mm]  
TOLERANCES: ANGULAR:  $\pm$ °  
TWO PLACE DECIMAL:  $\pm$ -.  
THREE PLACE DECIMAL:  $\pm$ -.  
PRINTED GRAPHICS:  $\pm$ -.  
PROPRIETARY AND CONFIDENTIAL  
THE INFORMATION CONTAINED IN THIS  
DRAWING IS THE SOLE PROPERTY OF  
POLYCASE. ANY REPRODUCTION IN PART  
OR AS A WHOLE WITHOUT THE WRITTEN  
PERMISSION OF POLYCASE IS PROHIBITED.  
CAD FILE: AL-24

PART NO. AL-24P-01		
MATERIAL		
FLAME RATING		SIZE <b>B</b>
DRAWN	NAME	DATE
CHECKED	C.C.B.	12/21/2017


1305 CHESTER IND. PARKWAY AVON, OHIO 44011-1083 U.S.A.  
PH#: 1-800-248-1233, 440-934-0444 FAX#: 440-934-0088

Die Cast Aluminum Enclosure		REV -
SCALE: 1:1		SHEET 1 OF 1

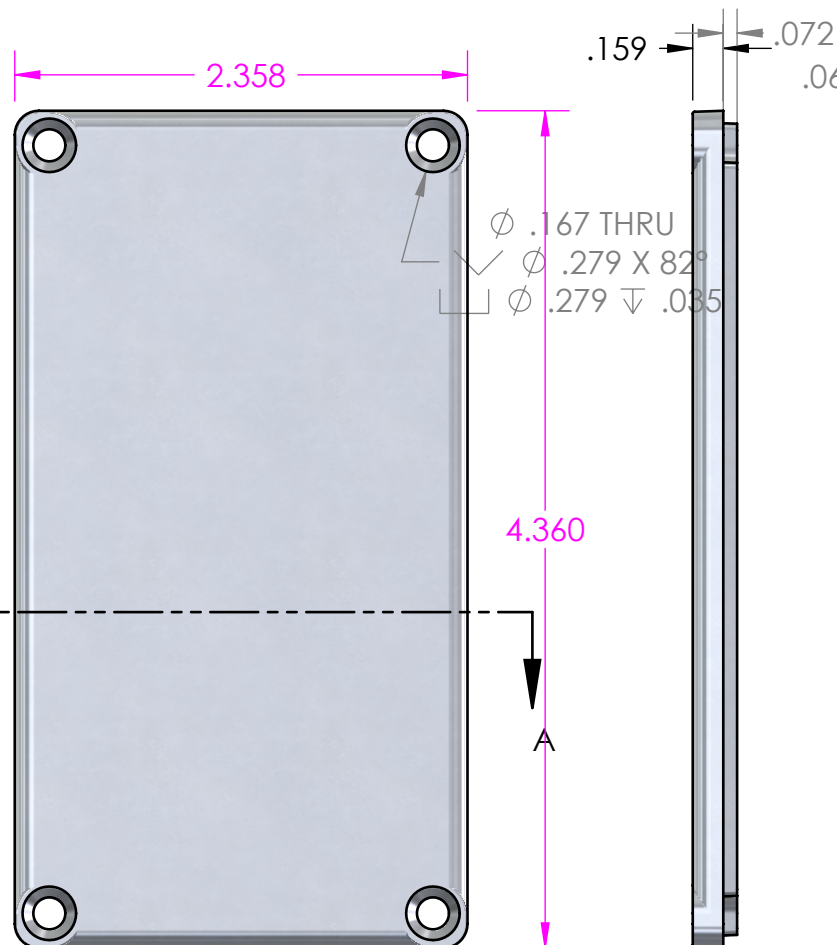




UNLESS OTHERWISE SPECIFIED: DIMENSIONS ARE IN: INCHES[mm] TOLERANCES: ANGULAR: ±° TWO PLACE DECIMAL: ± THREE PLACE DECIMAL: ±- PRINTED GRAPHICS: ±-		PART NO. AL-24BP-01		<div></div> <div>1305 CHESTER IND. PARKWAY AVON, OHIO 44011-1083 U.S.A. PH#: 1-800-248-1233, 440-934-0444 FAX#: 440-934-0088</div>			
		MATERIAL ALUMINUM ADC12					
PROPRIETARY AND CONFIDENTIAL THE INFORMATION CONTAINED IN THIS DRAWING IS THE SOLE PROPERTY OF POLYCASE. ANY REPRODUCTION IN PART OR AS A WHOLE WITHOUT THE WRITTEN PERMISSION OF POLYCASE IS PROHIBITED. CAD FILE: AL-24BP		FLAME RATING		SIZE <b>B</b>	Die Cast Aluminum Base		REV <b>-</b>
			NAME	DATE			
		DRAWN	D.M.F.	11/30/2017			
		CHECKED	C.C.B.	12/21/2017	SCALE: 1:1		

REV.	DESCRIPTION	ZONE	BY	APPR'D	DATE
REVISIONS					



PART NUMBER: AL-24C-01  
MATERIAL: ALUMINUM ADC12  
COLOR: NATURAL



UNLESS OTHERWISE SPECIFIED: DIMENSIONS ARE IN: INCHES[mm] TOLERANCES: ANGULAR: ±° TWO PLACE DECIMAL: ±. THREE PLACE DECIMAL: ±. PRINTED GRAPHICS: ±.	PART NO. AL-24C-01		<div> 1305 CHESTER IND. PARKWAY AVON, OHIO 44011-1083 U.S.A. PHF: 1-800-248-1233, 440-934-0444 FAXR: 440-934-0088</div>		
	MATERIAL ALUMINUM ADC12				
PROPRIETARY AND CONFIDENTIAL THE INFORMATION CONTAINED IN THIS DRAWING IS THE SOLE PROPERTY OF POLYCASE. ANY REPRODUCTION IN PART OR AS A WHOLE WITHOUT THE WRITTEN PERMISSION OF POLYCASE IS PROHIBITED. CAD FILE: AL-24C	FLAME RATING -		SIZE <b>B</b>	Die Cast Aluminum Cover	REV -
		NAME	DATE		
	DRAWN	D.M.F.	11/30/2017		
CHECKED	C.C.B.	12/21/2017	SCALE: 1:1		SHEET 1 OF 1