

ITEM	PART NUMBER	DESCRIPTION	Material	Color	Flame Rating	VK-62AA/QTY.	VK-62AA*14/QTY.
1	VK-62BAA	BASE, BATTERY COMPARTMENT: TWO AA	ABS	BLACK	UL-94V-0	1	-
2	VK-62C	COVER	ABS	BLACK	UL-94V-0	1	-
3	VK-62D	COMPARTMENT DOOR	ABS	BLACK	UL-94V-0	1	-
4	VK-62BAA*14	BASE, BATTERY COMPARTMENT: TWO AA	ABS	WHITE	UL-94V-0	-	1
5	VK-62C*14	COVER	ABS	WHITE	UL-94V-0	-	1
6	VK-62D*14	COMPARTMENT DOOR	ABS	WHITE	UL-94V-0	-	1
7	2AA-BC	TWO AA BATTERY KIT				1	1
8	SCREWS-HL5/8-BR	4-24 X .625 CROSS OVAL C'SUNK HEAD THREAD FORMING SCREW	STEEL			4	4

D

D

C

C

B

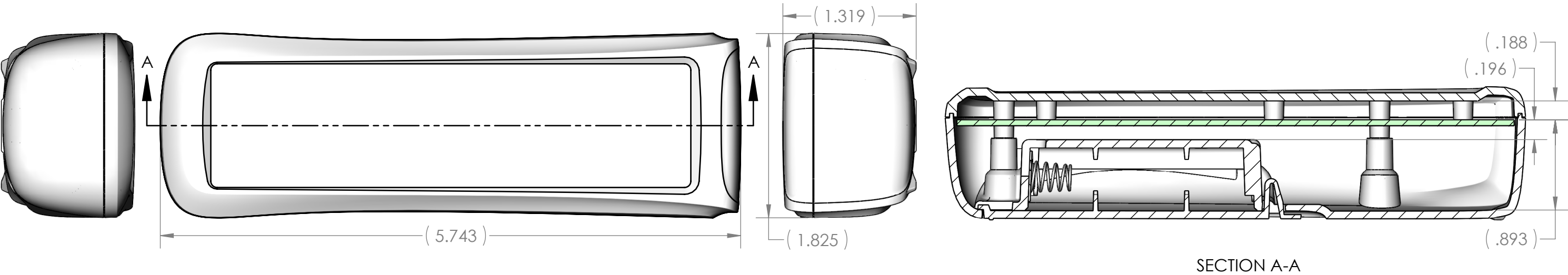
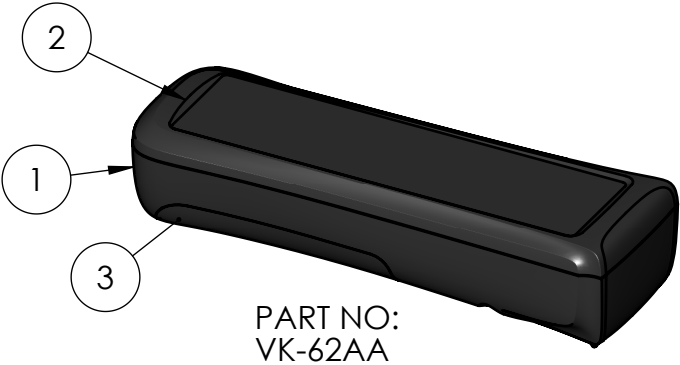
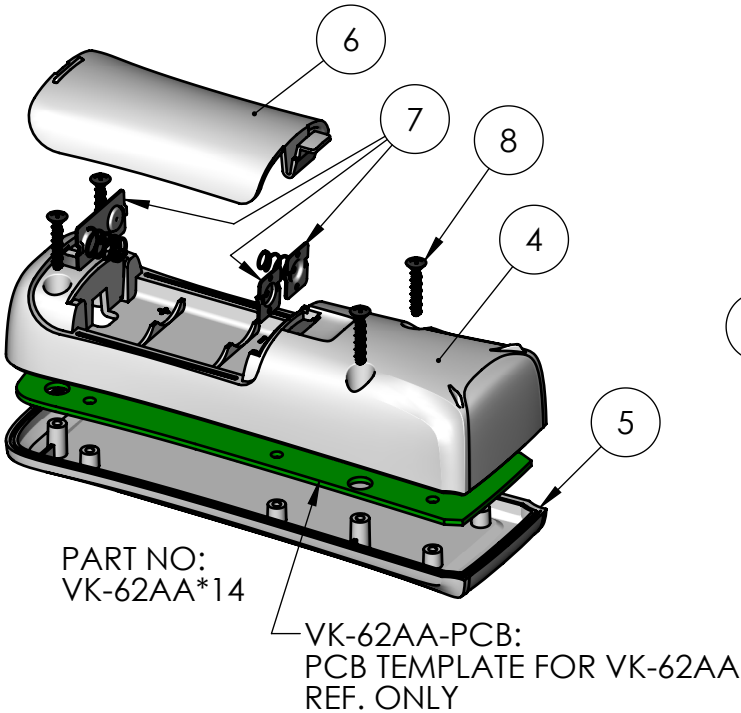
B


A

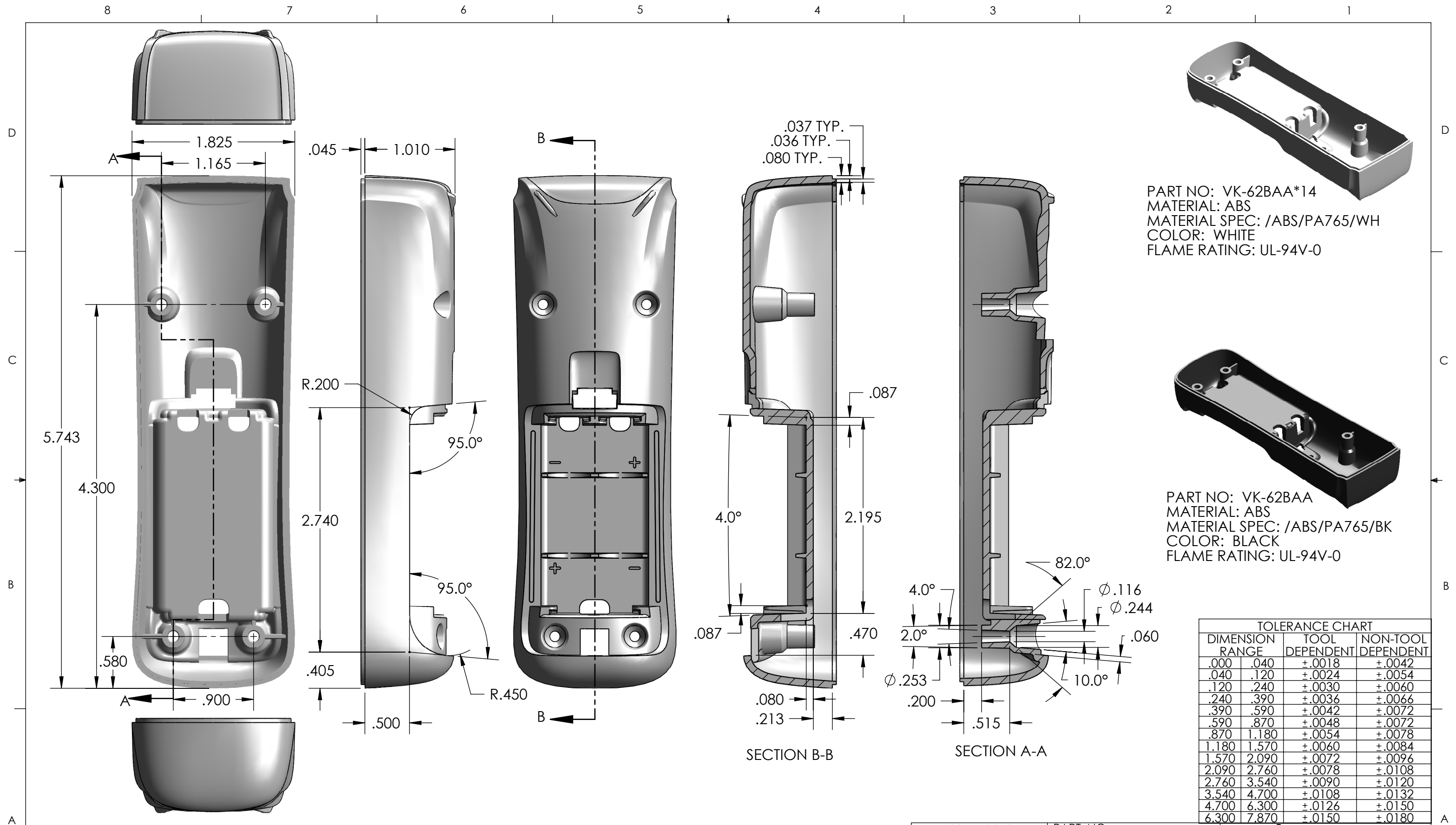
A

- NOTES:
1. BATTERY COMPARTMENT ACCEPTS TWO AA BATTERIES.
 2. PCB MOUNTING BOSSSES ACCEPT A #4 X .25 THREAD FORMING SCREW.

REV.	DESCRIPTION	ZONE	BY	APPR'D	DATE
	REVISIONS				



UNLESS OTHERWISE SPECIFIED: DIMENSIONS ARE IN: INCHES[mm] TOLERANCES: ANGULAR: ±2° TWO PLACE DECIMAL: ±.010 THREE PLACE DECIMAL: ±.005 PRINTED GRAPHICS: ±.010	PART NO. SEE BOM		<div>polycase</div> <div>1305 CHESTER IND. PARKWAY AVON, OHIO 44011-1083 U.S.A. PH#: 1-800-248-1233, 440-934-0444 FAX#: 440-934-0088</div>		
	MATERIAL				
PROPRIETARY AND CONFIDENTIAL THE INFORMATION CONTAINED IN THIS DRAWING IS THE SOLE PROPERTY OF POLYCASE. ANY REPRODUCTION IN PART OR AS A WHOLE WITHOUT THE WRITTEN PERMISSION OF POLYCASE IS PROHIBITED. CAD FILE: VK-62AA	FLAME RATING		SIZE B	VK-62 ASM, TWO AA	REV -
		NAME	DATE		
	DRAWN	D.M.F.	2/14/2011		
	CHECKED	B.M.B.	2/22/2011	SCALE: 1:1	



PART NO: VK-62BAA*14
MATERIAL: ABS
MATERIAL SPEC: /ABS/PA765/WH
COLOR: WHITE
FLAME RATING: UL-94V-0

PART NO: VK-62BAA
MATERIAL: ABS
MATERIAL SPEC: /ABS/PA765/BK
COLOR: BLACK
FLAME RATING: UL-94V-0

TOLERANCE CHART			
DIMENSION RANGE		TOOL DEPENDENT	NON-TOOL DEPENDENT
.000	.040	±.0018	±.0042
.040	.120	±.0024	±.0054
.120	.240	±.0030	±.0060
.240	.390	±.0036	±.0066
.390	.590	±.0042	±.0072
.590	.870	±.0048	±.0072
.870	1.180	±.0054	±.0078
1.180	1.570	±.0060	±.0084
1.570	2.090	±.0072	±.0096
2.090	2.760	±.0078	±.0108
2.760	3.540	±.0090	±.0120
3.540	4.700	±.0108	±.0132
4.700	6.300	±.0126	±.0150
6.300	7.870	±.0150	±.0180

NOTES:
1. REFER TO SOLID MODEL FOR COMPLETE PART DEFINITION.

REV.	DESCRIPTION	ZONE	BY	APPR'D	DATE
REVISIONS					

UNLESS OTHERWISE SPECIFIED:
DIMENSIONS ARE IN: INCHES [mm]
TOLERANCES: ANGULAR: ±2°
TWO PLACE DECIMAL: ±
THREE PLACE DECIMAL: ±
PRINTED GRAPHICS: ±

PROPRIETARY AND CONFIDENTIAL
THE INFORMATION CONTAINED IN THIS
DRAWING IS THE SOLE PROPERTY OF
POLYCASE. ANY REPRODUCTION IN PART
OR AS A WHOLE WITHOUT THE WRITTEN
PERMISSION OF POLYCASE IS PROHIBITED.
CAD FILE: VK-62BAA

PART NO.
AS NOTED

MATERIAL
AS NOTED

FLAME RATING
AS NOTED

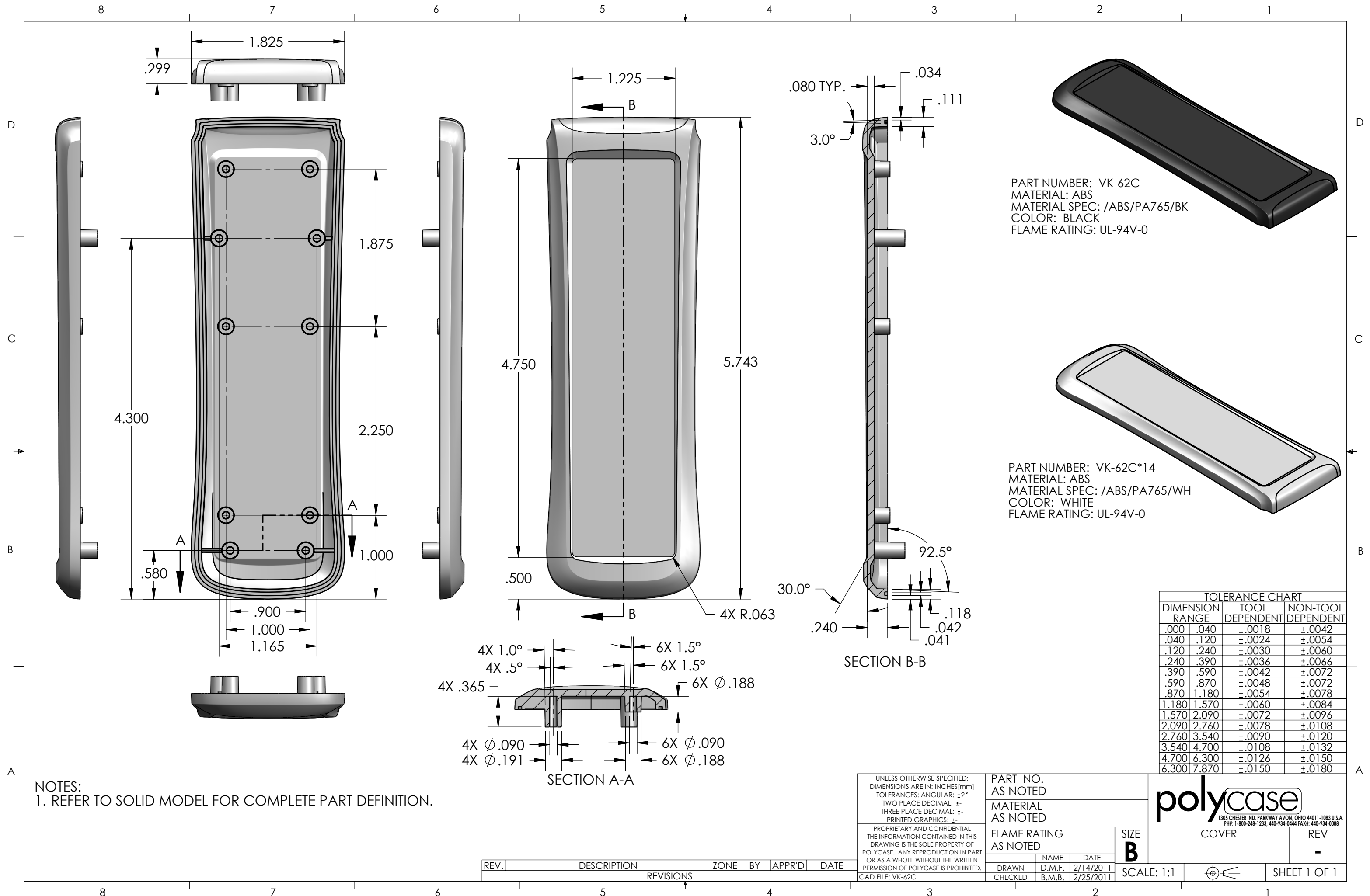
SIZE
B

SCALE: 1:1

1305 CHESTER IND. PARKWAY AVON, OHIO 44011-1083 U.S.A.
PH# 1-800-248-1233, 440-934-0444 FAX# 440-934-0088

BASE, BATTERY
COMPARTMENT: TWO AA

REV
-



PART NUMBER: VK-62C
MATERIAL: ABS
MATERIAL SPEC: /ABS/PA765/BK
COLOR: BLACK
FLAME RATING: UL-94V-0

PART NUMBER: VK-62C*14
MATERIAL: ABS
MATERIAL SPEC: /ABS/PA765/WH
COLOR: WHITE
FLAME RATING: UL-94V-0

TOLERANCE CHART			
DIMENSION RANGE		TOOL DEPENDENT	NON-TOOL DEPENDENT
.000	.040	±.0018	±.0042
.040	.120	±.0024	±.0054
.120	.240	±.0030	±.0060
.240	.390	±.0036	±.0066
.390	.590	±.0042	±.0072
.590	.870	±.0048	±.0072
.870	1.180	±.0054	±.0078
1.180	1.570	±.0060	±.0084
1.570	2.090	±.0072	±.0096
2.090	2.760	±.0078	±.0108
2.760	3.540	±.0090	±.0120
3.540	4.700	±.0108	±.0132
4.700	6.300	±.0126	±.0150
6.300	7.870	±.0150	±.0180

NOTES:
1. REFER TO SOLID MODEL FOR COMPLETE PART DEFINITION.

REV.	DESCRIPTION	ZONE	BY	APPR'D	DATE
REVISIONS					

UNLESS OTHERWISE SPECIFIED:
DIMENSIONS ARE IN: INCHES [mm]
TOLERANCES: ANGULAR: ±2°
TWO PLACE DECIMAL: ±
THREE PLACE DECIMAL: ±
PRINTED GRAPHICS: ±

PROPRIETARY AND CONFIDENTIAL
THE INFORMATION CONTAINED IN THIS
DRAWING IS THE SOLE PROPERTY OF
POLYCASE. ANY REPRODUCTION IN PART
OR AS A WHOLE WITHOUT THE WRITTEN
PERMISSION OF POLYCASE IS PROHIBITED.
CAD FILE: VK-62C

PART NO.
AS NOTED

MATERIAL
AS NOTED

FLAME RATING
AS NOTED

SIZE
B

SCALE: 1:1

COVER

REV
-

DRAWN
D.M.F.

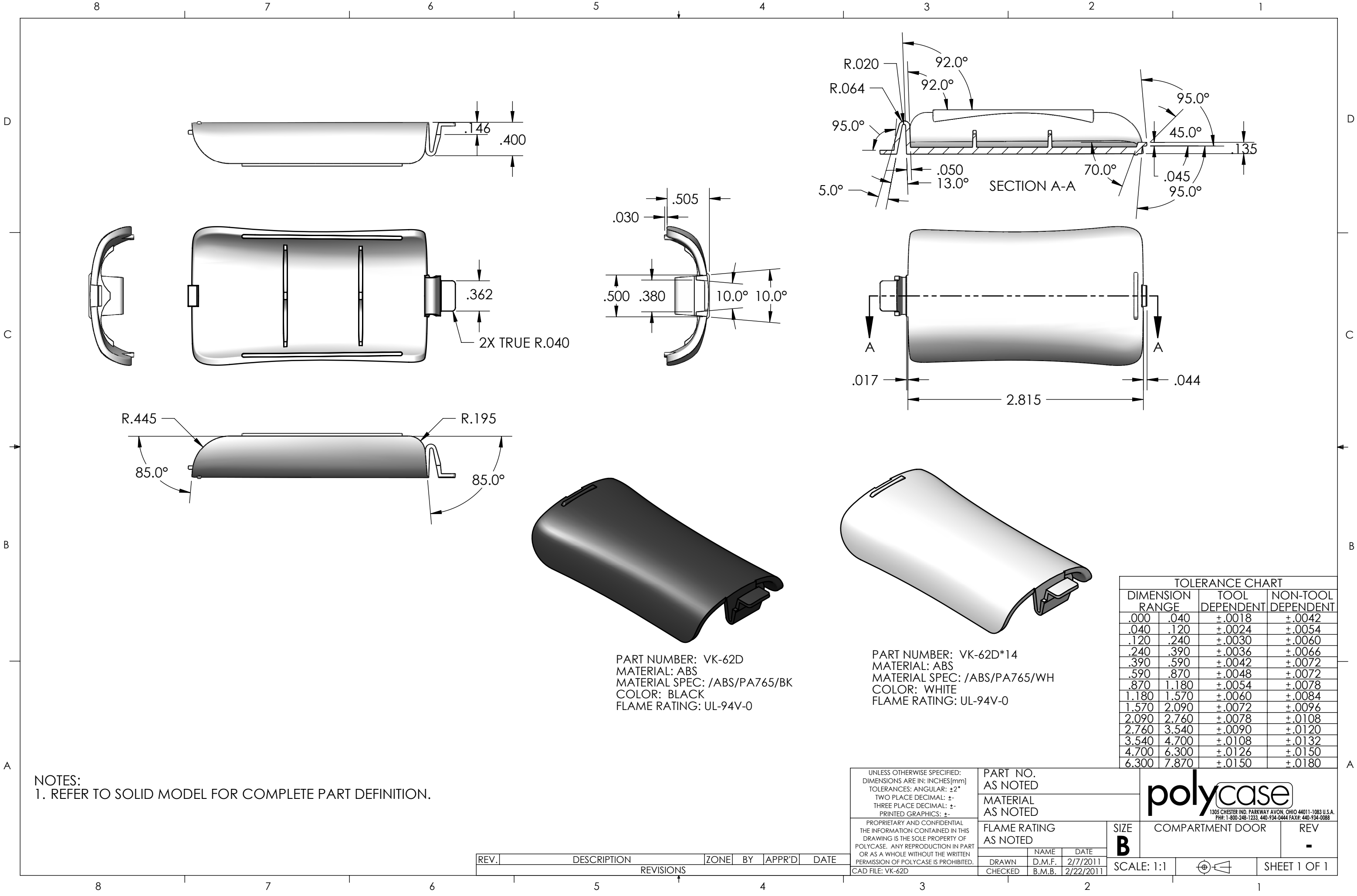
CHECKED
B.M.B.

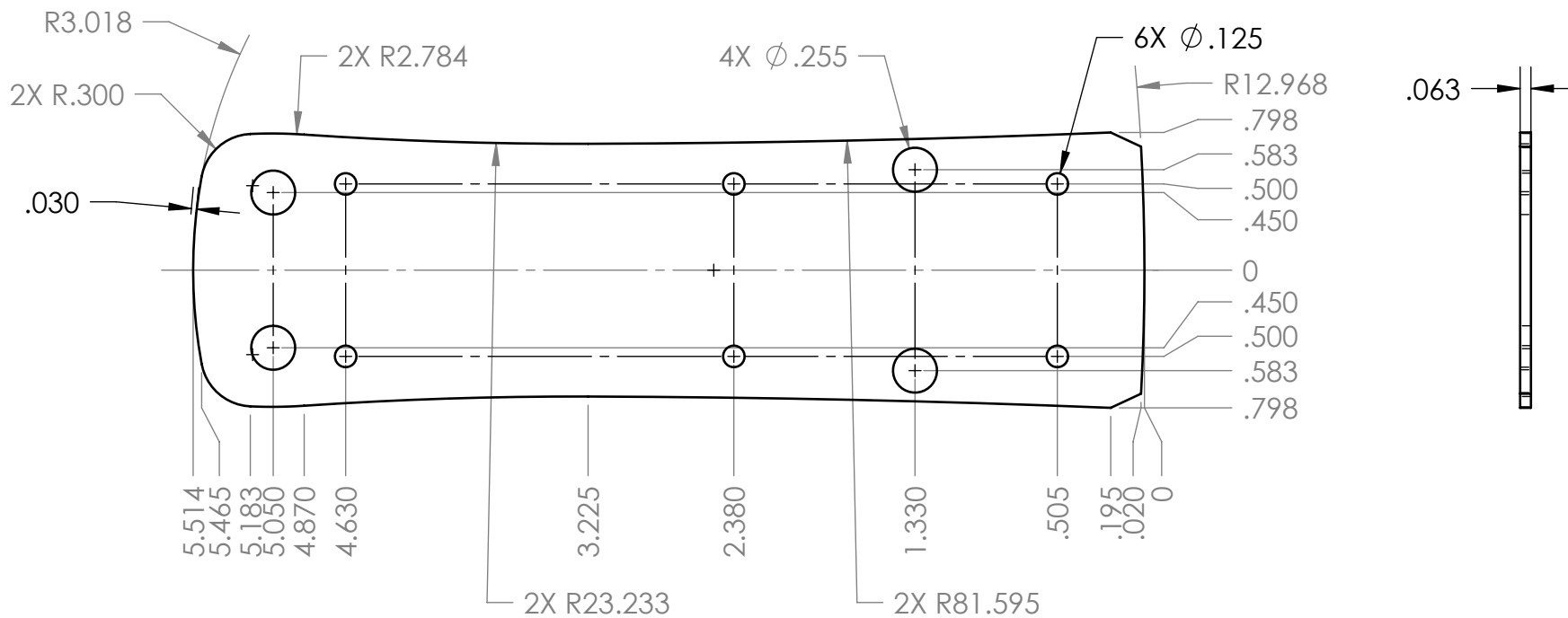
DATE
2/14/2011

DATE
2/25/2011

1305 CHESTER IND. PARKWAY AVON, OHIO 44011-1083 U.S.A.
PH# 1-800-248-1233, 440-934-0444 FAX# 440-934-0088



SHEET 1 OF 1





NOTES:

- INCLUDES .030 CLEARANCE FROM INTERIOR OF VK-62AA

UNLESS OTHERWISE SPECIFIED: DIMENSIONS ARE IN: INCHES[mm] TOLERANCES: ANGULAR: ±2° TWO PLACE DECIMAL: ±.010 THREE PLACE DECIMAL: ±.005 PRINTED GRAPHICS: ±.010	PART NO. VK-62AA-PCB		<div><p>1305 CHESTER IND. PARKWAY AVON, OHIO 44011-1083 U.S.A. PH: 1-800-248-1233, 440-934-0444 FAX: 440-934-0088</p></div>		
	MATERIAL				
PROPRIETARY AND CONFIDENTIAL THE INFORMATION CONTAINED IN THIS DRAWING IS THE SOLE PROPERTY OF POLYCASE. ANY REPRODUCTION IN PART OR AS A WHOLE WITHOUT THE WRITTEN PERMISSION OF POLYCASE IS PROHIBITED. CAD FILE: VK-62AA-PCB	FLAME RATING		SIZE A	PCB TEMPLATE FOR VK-62AA	REV -
		NAME	DATE		
	DRAWN	D.M.F.	2/14/2011		
	CHECKED	B.M.B.	2/22/2011		
	SCALE: 1:1			SHEET 1 OF 1	

REV.	DESCRIPTION	ZONE	BY	APPR'D	DATE
REVISIONS					

5

4

3

2

1

D

C

B

A