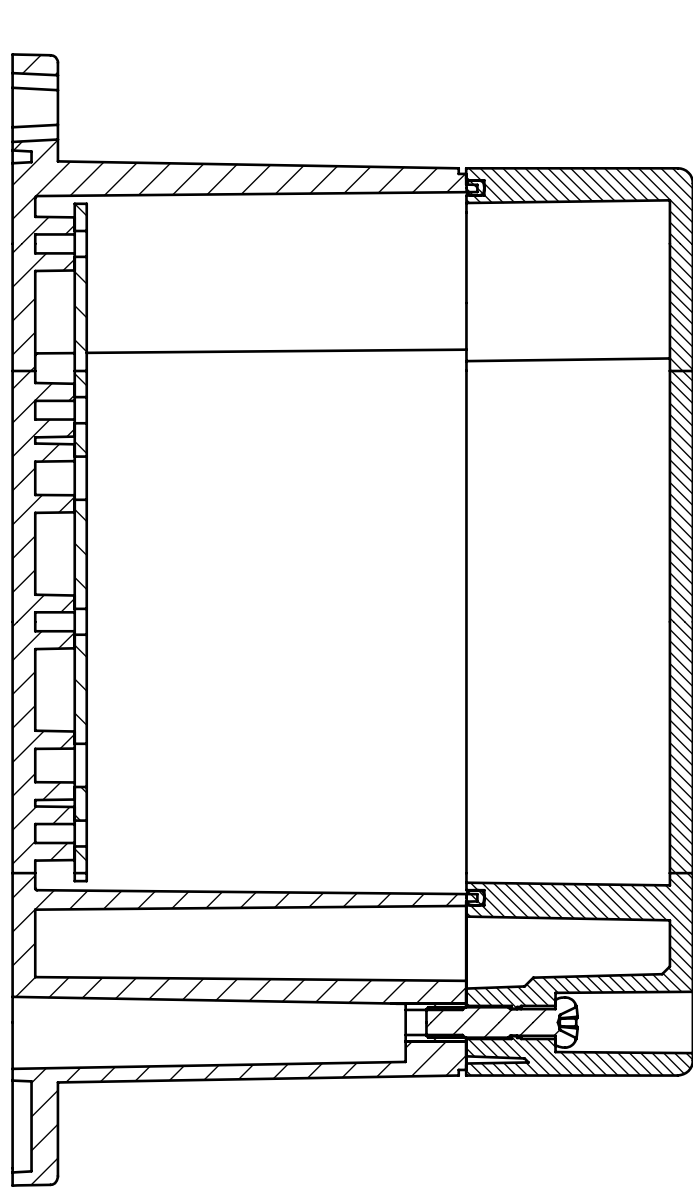
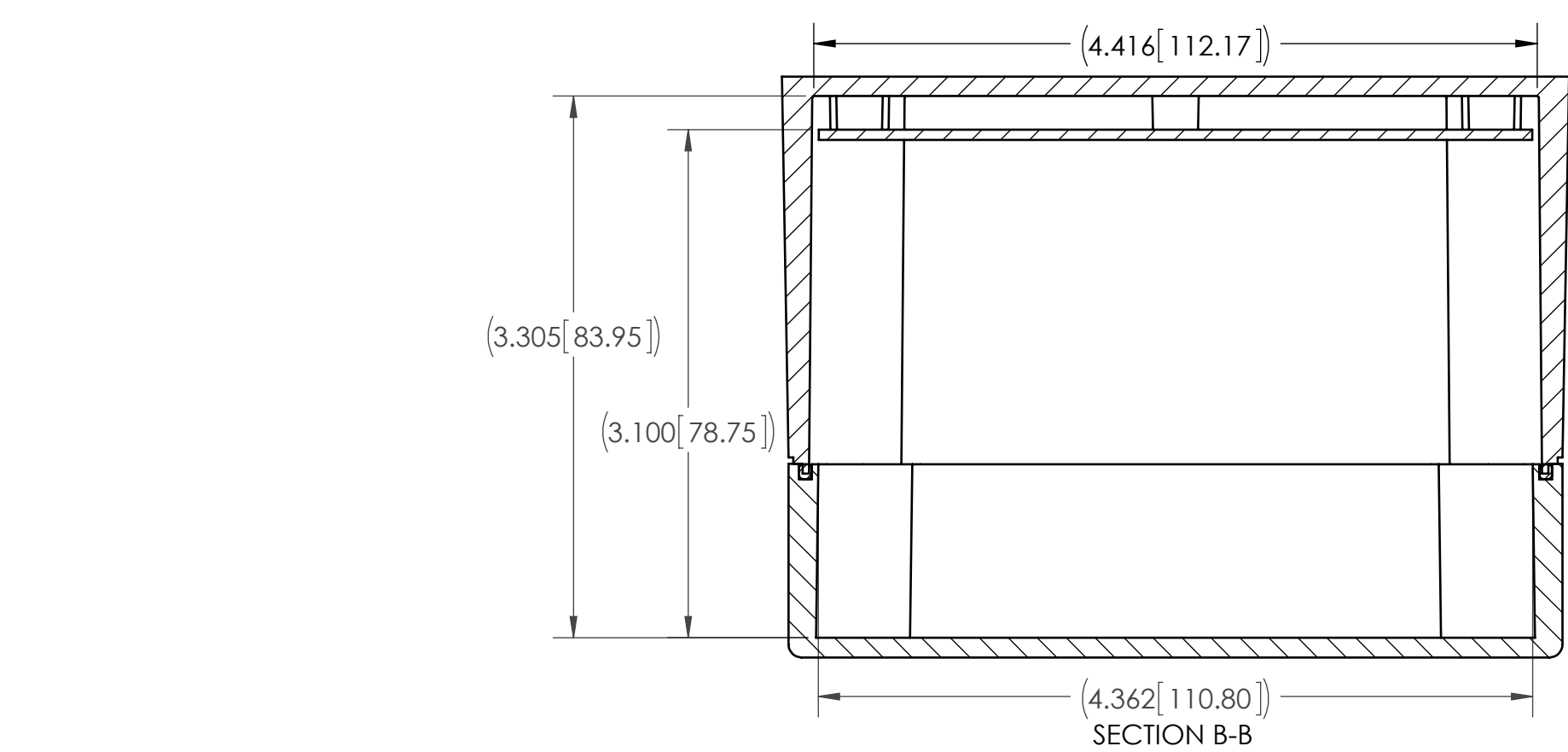
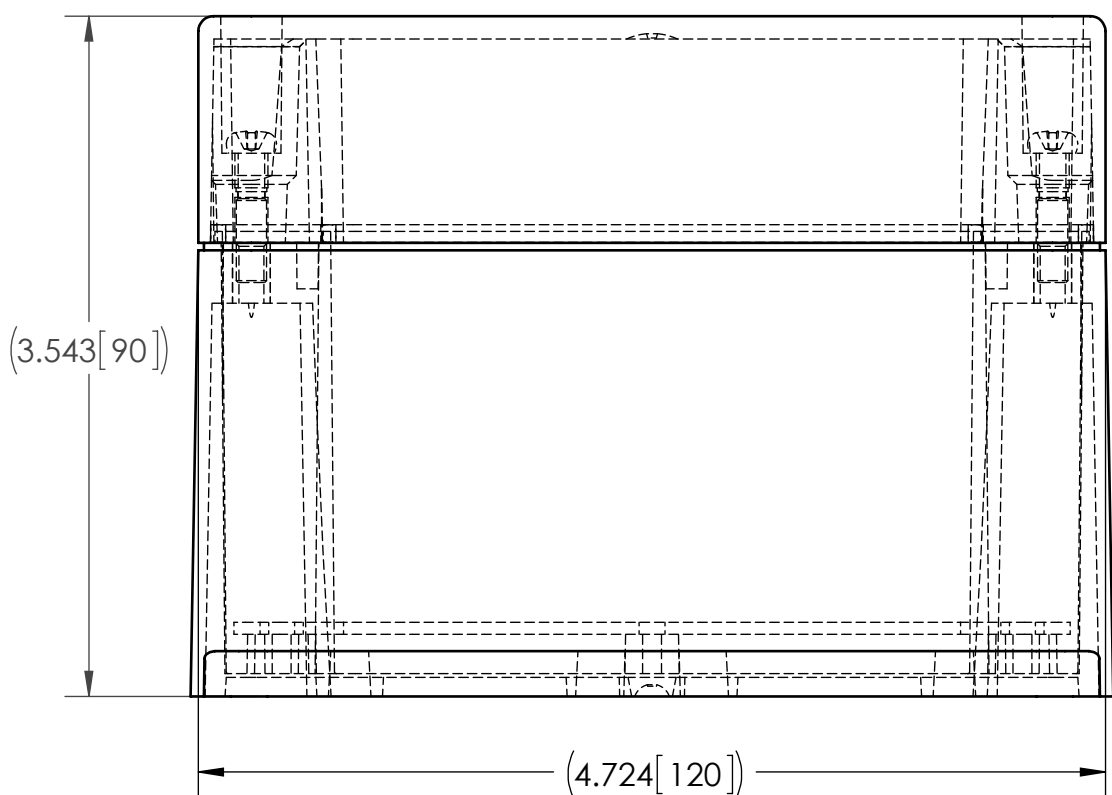
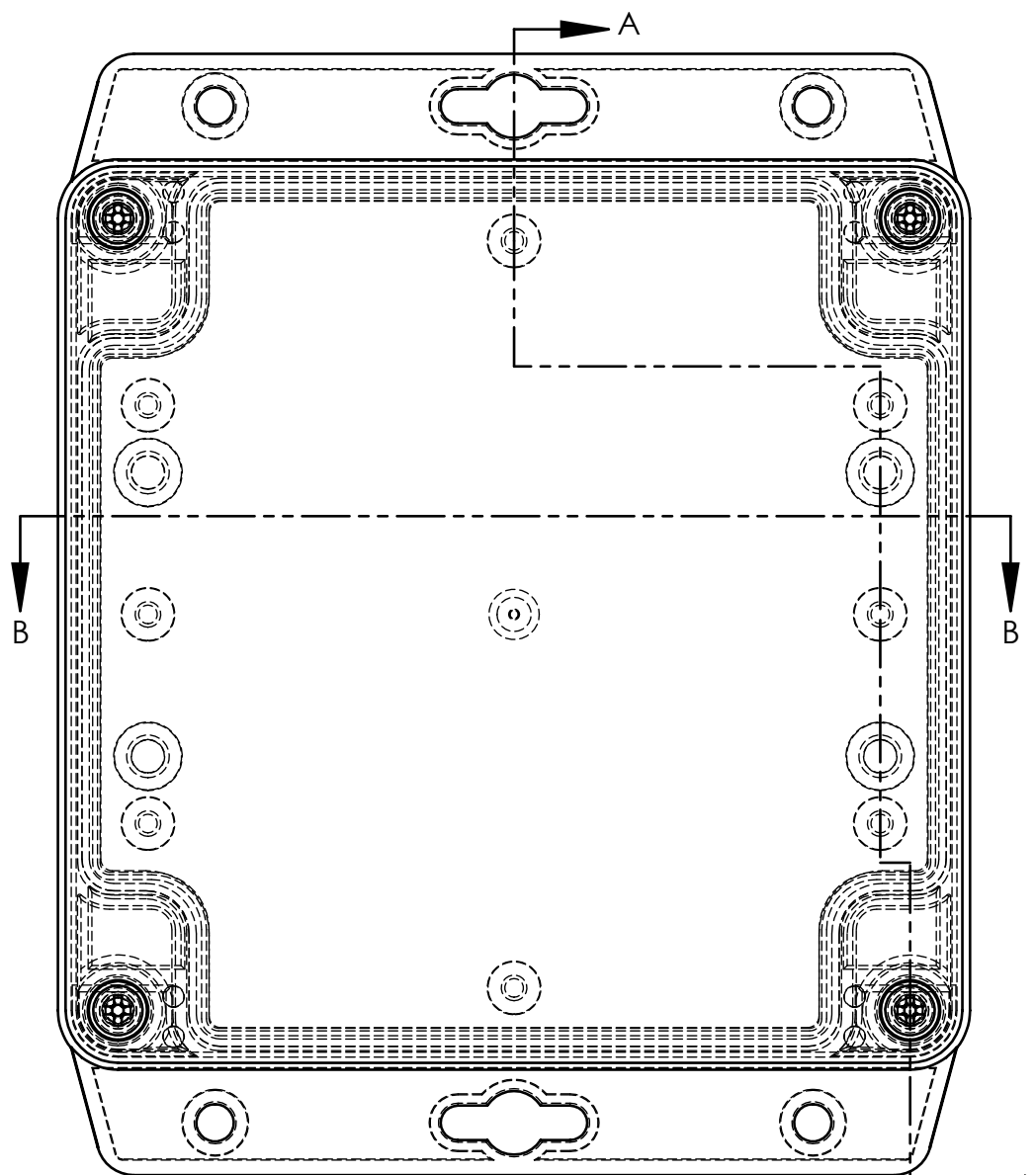


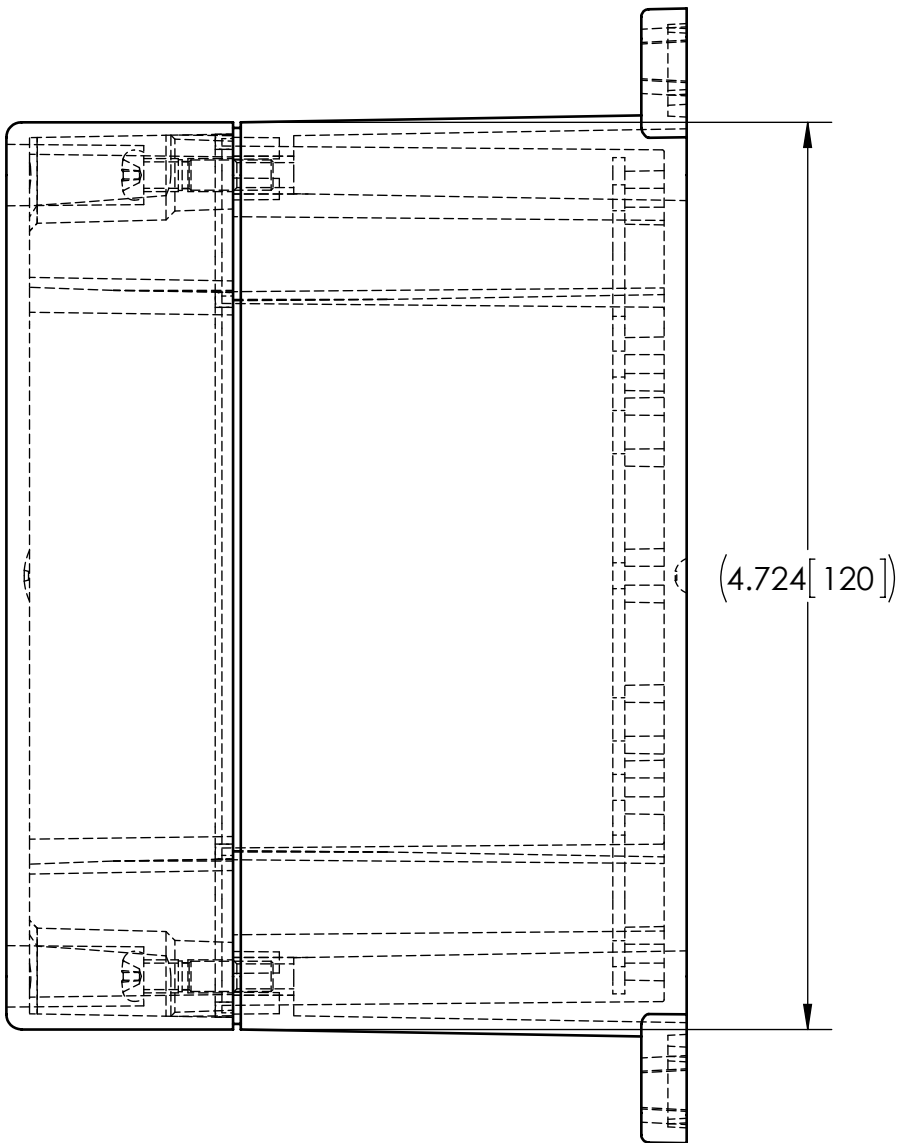
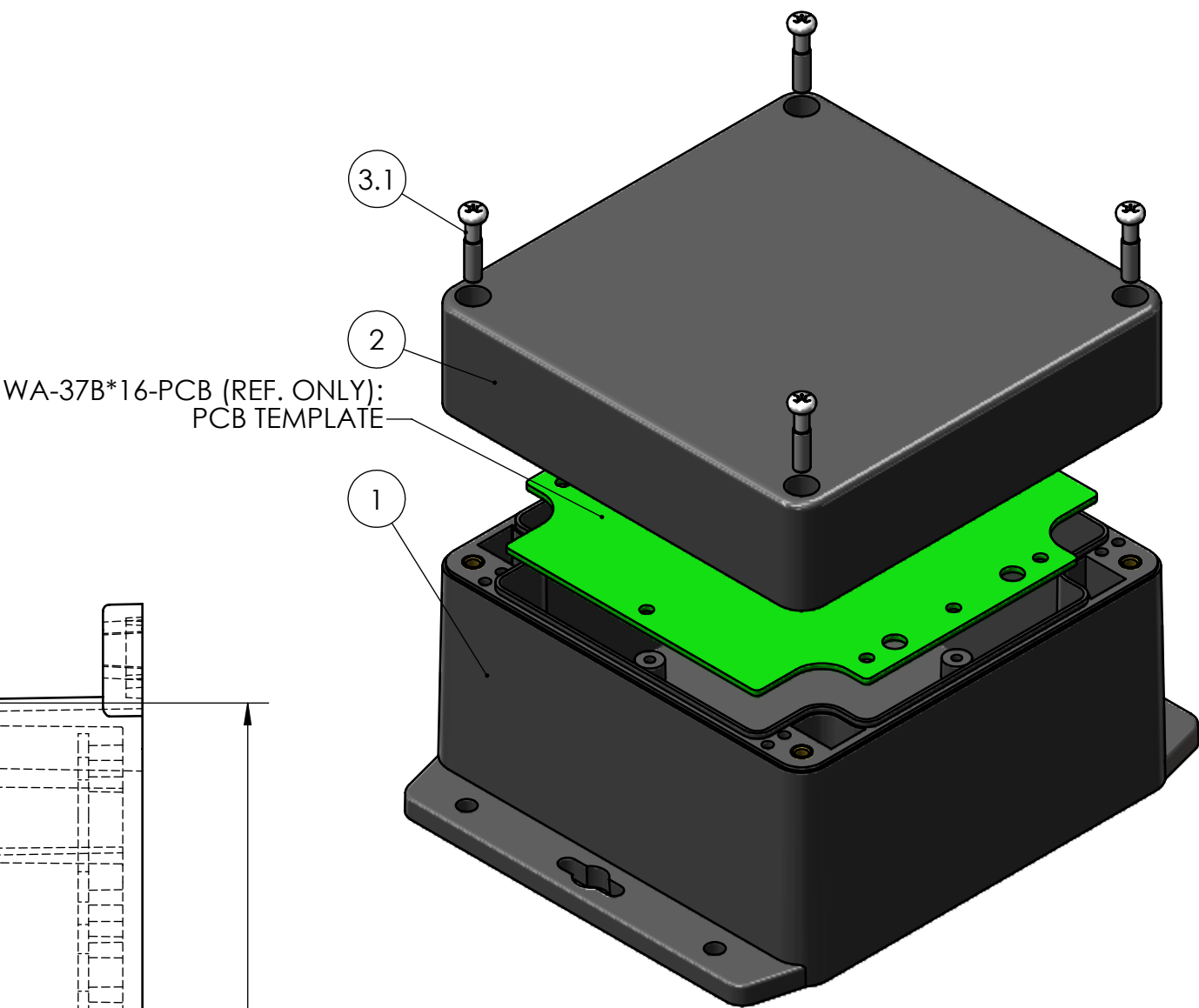
F  
E  
D  
C  
B  
A





SECTION A-A



ITEM NO.	PART NUMBER	Rev.	DESCRIPTION	MATERIAL	FlameRating	Color	QTY.
1	WA-37BF*16	-	WA BASE, W/MOUNTING BOSSES	ABS	UL94-HB (UL FILE E56070)	DARK GRAY	1
2	WA-36C*16	-	WA COVER, W/GASKET	ABS	UL94-HB (UL FILE E56070)	DARK GRAY	1
3	SCREWS-SSM4-20-4	-	ASSEMBLY SCREWS, 4 PACK				1
3.1	SCREWS-SSM4-20	-.01	M4X0.7 X 20mm OAL, PHILLIPS DRIVE MACHINE SCREW	STAINLESS STEEL			4

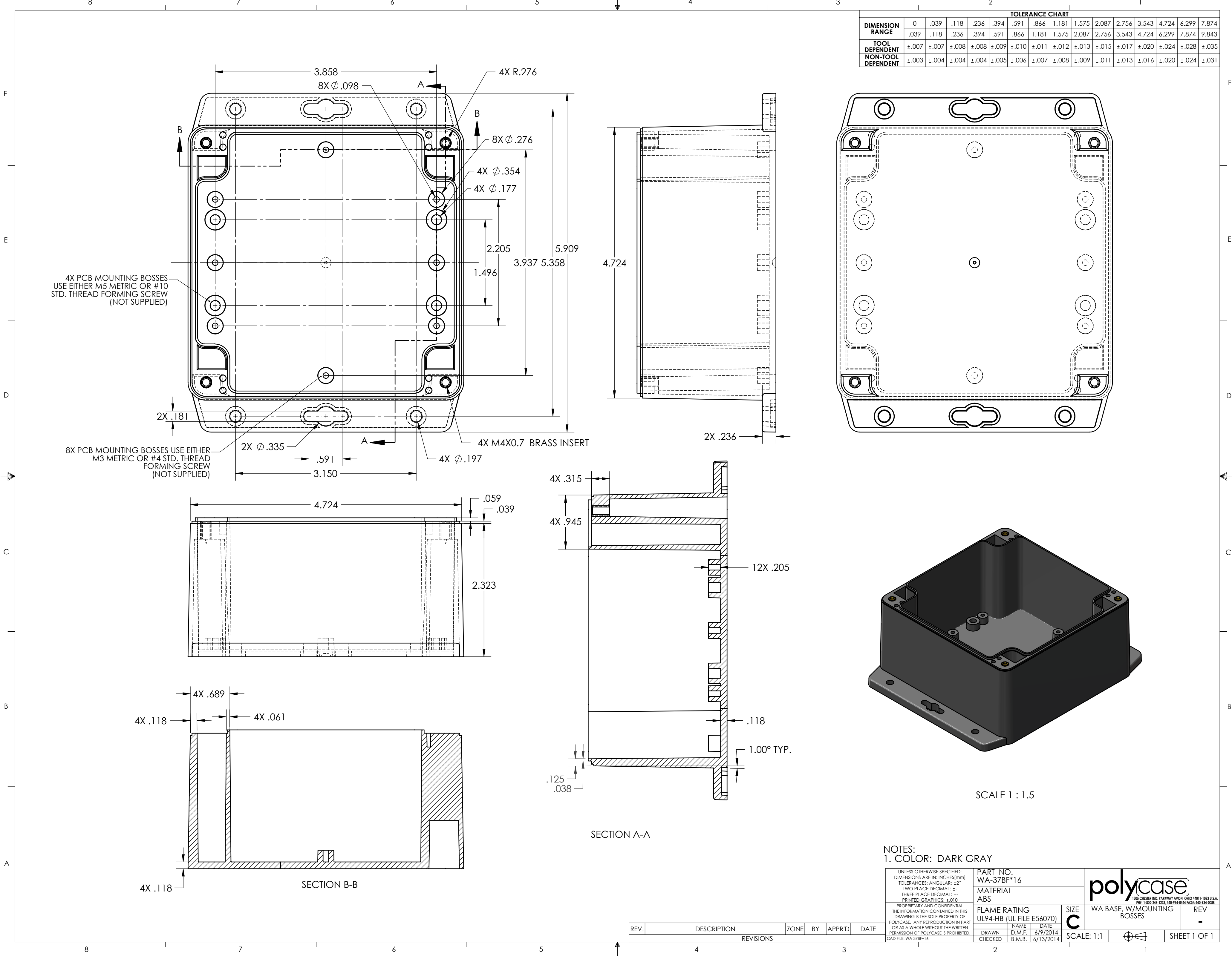


NOTES:  
1. SERVICE TEMPERATURE RANGE: -40°C TO 80°C  
2. DESIGNED TO NEMA 1, 2, 4, 4X, 12, 13  
3. UL LISTED TO UL508-4X SPECIFICATIONS (UL FILE #E194432).

UNLESS OTHERWISE SPECIFIED: DIMENSIONS ARE IN: INCHES[mm] TOLERANCES: ANGULAR: ±2° TWO PLACE DECIMAL: ±.030 THREE PLACE DECIMAL: ±.015 PRINTED GRAPHICS: ±.010		PART NO. WA-37F*16		 1305 CHESTER RD. PARKWAY AVON, OHIO 44011-1083 U.S.A. PH: 1-800-248-1233 440-934-0444 FAX: 440-934-0088	
PROPRIETARY AND CONFIDENTIAL THE INFORMATION CONTAINED IN THIS DRAWING IS THE SOLE PROPERTY OF POLYCASE. ANY REPRODUCTION IN PART OR AS A WHOLE WITHOUT THE WRITTEN PERMISSION OF POLYCASE IS PROHIBITED. CAD FILE: WA-37F*16		MATERIAL			
FLAME RATING UL94-HB		SIZE C		Product Assembly Drawing	
DRAWN CHECKED		NAME D.M.F. B.M.B.		DATE 6/9/2014 6/13/2014	
SCALE: 1:1				SHEET 1 OF 1	

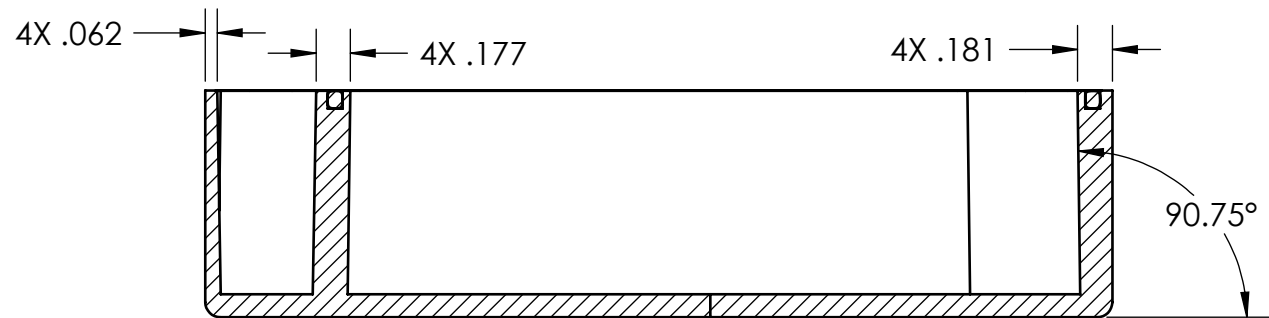
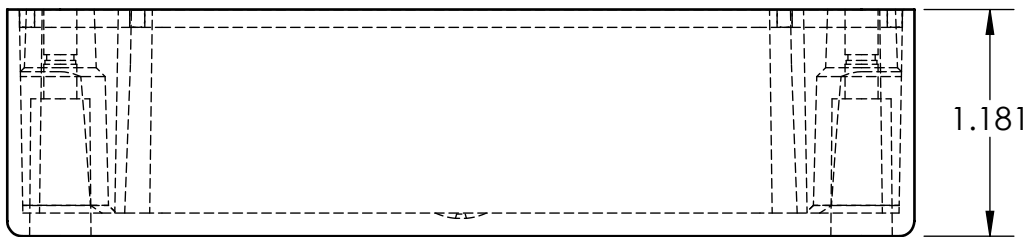
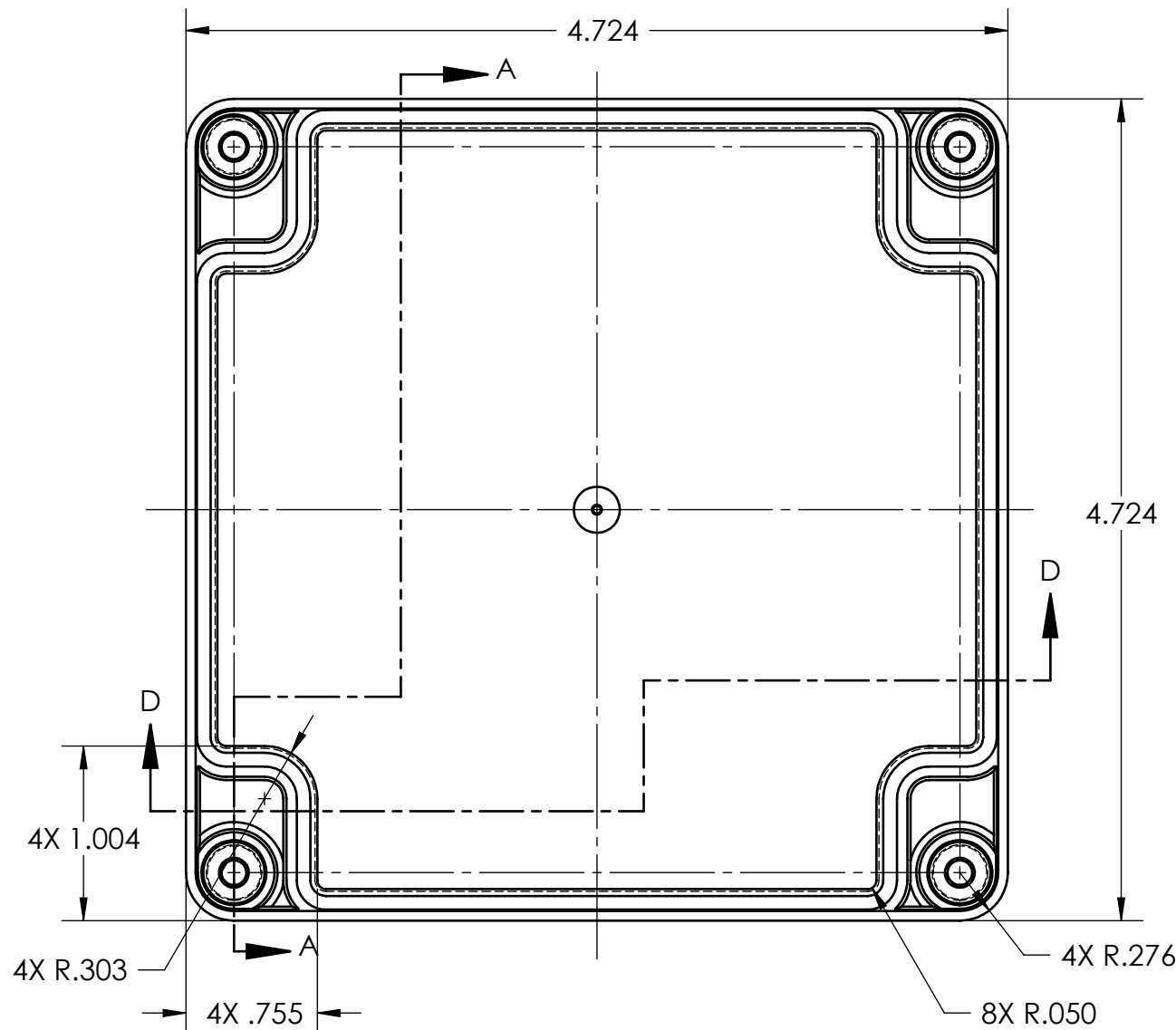
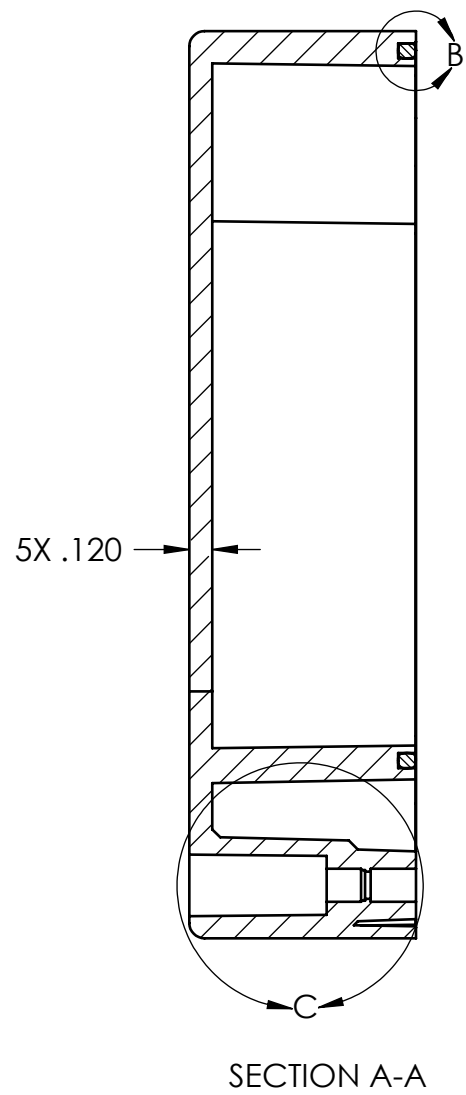
REV.	DESCRIPTION	ZONE	BY	APPR'D	DATE
REVISIONS					

8 7 6 5 4 3 2 1

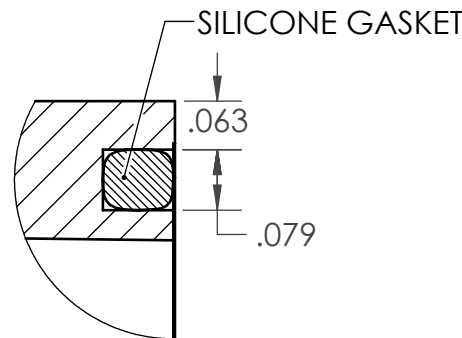
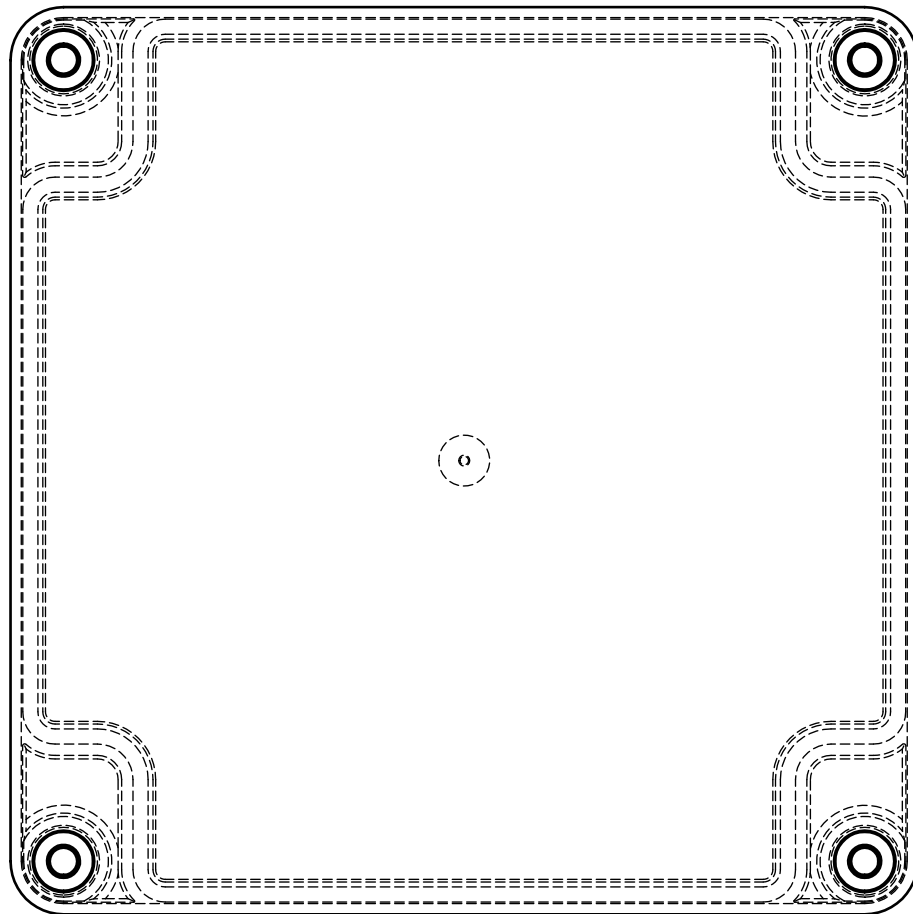
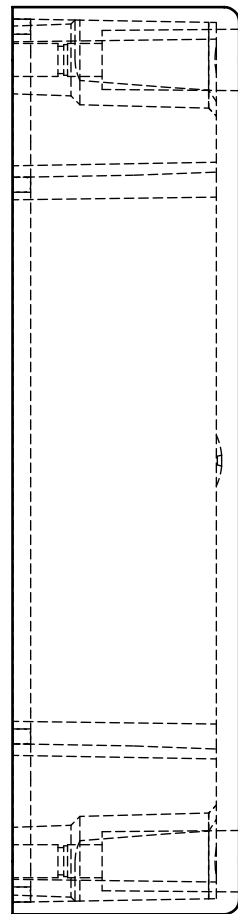


TOLERANCE CHART																			
DIMENSION RANGE	0	.039	.118	.236	.394	.591	.866	1.181	1.575	2.087	2.756	3.543	4.724	6.299	7.874	9.843	12.402	15.748	19.685
TOOL DEPENDENT	.039	.118	.236	.394	.591	.866	1.181	1.575	2.087	2.756	3.543	4.724	6.299	7.874	9.843	12.402	15.748	19.685	24.803
NON-TOOL DEPENDENT	±.007	±.007	±.008	±.008	±.009	±.010	±.011	±.012	±.013	±.015	±.017	±.020	±.024	±.028	±.035	.043	.051	.063	.079
DEPENDENT	±.003	±.004	±.004	±.004	±.005	±.006	±.007	±.008	±.009	±.011	±.013	±.016	±.020	±.024	±.031	.039	.047	.059	.075

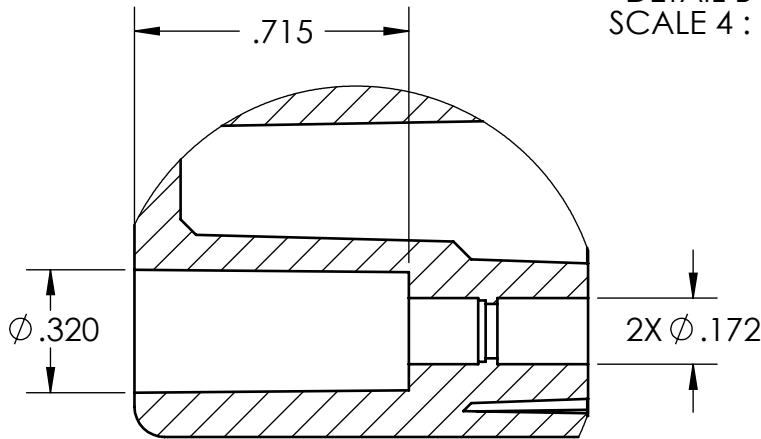
F  
E  
D  
C  
B  
A



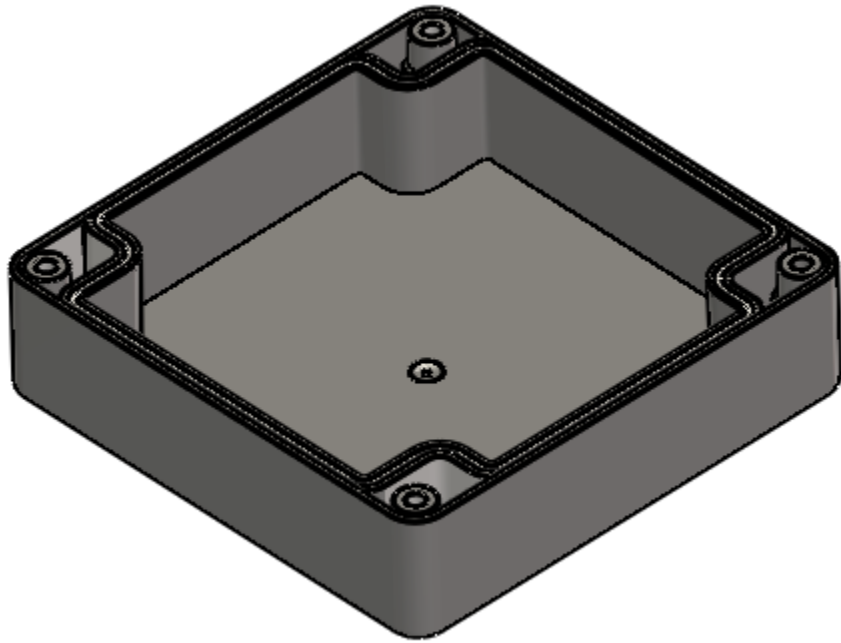
SECTION D-D



DETAIL B  
SCALE 4 : 1





DETAIL C  
SCALE 2 : 1  
(4 PLCS.)

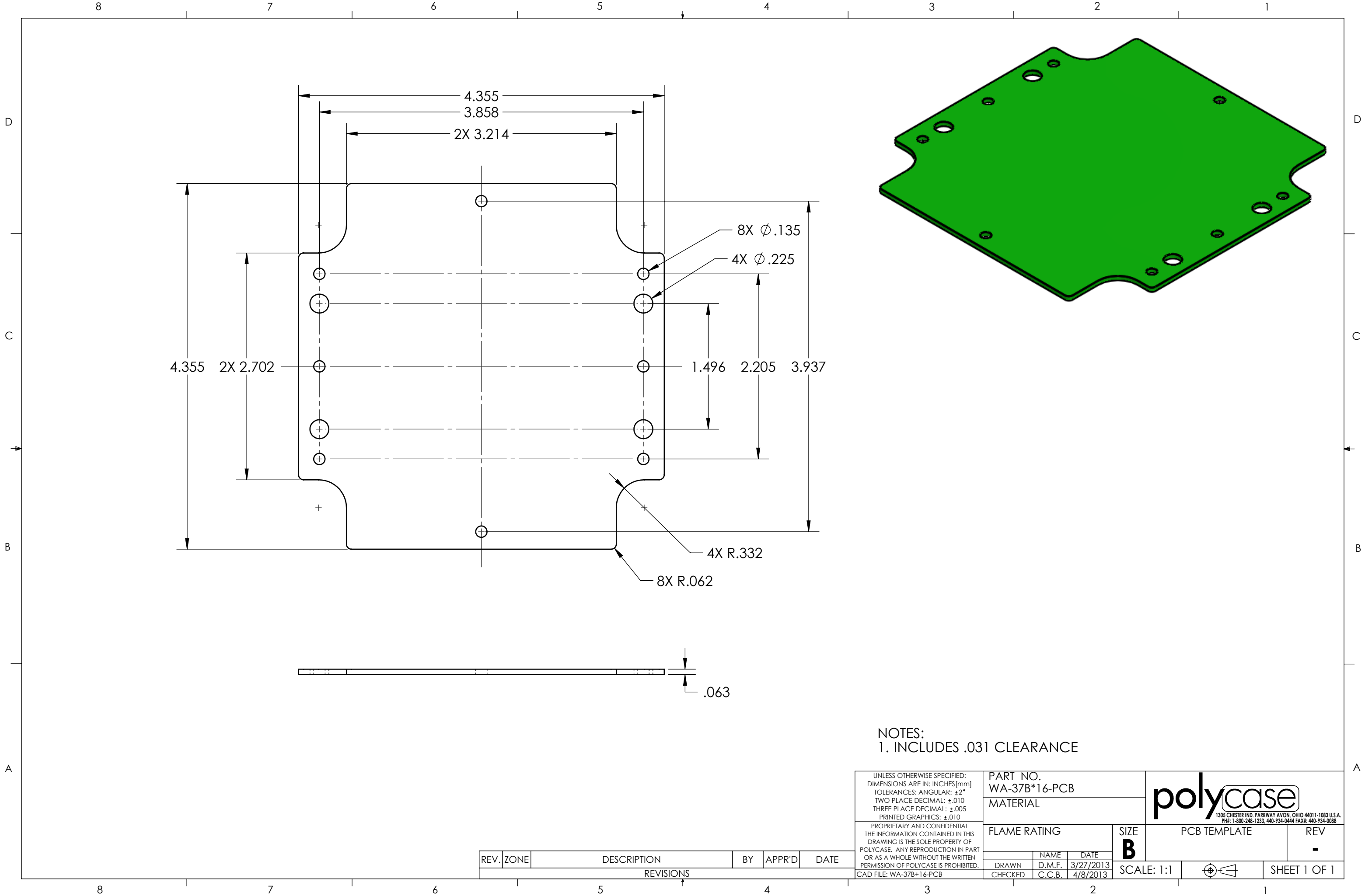


SCALE 1 : 1.5



NOTES:  
1. COLOR: DARK GRAY

UNLESS OTHERWISE SPECIFIED: DIMENSIONS ARE IN: INCHES[mm] TOLERANCES: ANGULAR: ±2° TWO PLACE DECIMAL: ±.030 THREE PLACE DECIMAL: ±.015 PRINTED GRAPHICS: ±.010		PART NO. WA-36C*16		 <small>1305 CHESTER RD. PARKWAY AVON, OHIO 44011-1083 U.S.A. PH: 1-800-248-1233, 440-934-0444 FAX: 440-934-0088</small>					
PROPRIETARY AND CONFIDENTIAL THE INFORMATION CONTAINED IN THIS DRAWING IS THE SOLE PROPERTY OF POLYCASE. ANY REPRODUCTION IN PART OR AS A WHOLE WITHOUT THE WRITTEN PERMISSION OF POLYCASE IS PROHIBITED. CAD FILE: WA-36C+16		MATERIAL ABS				REV -			
FLAME RATING UL94-HB (UL FILE E56070)				SIZE C		WA COVER, W/GASKET		REV -	
DRAWN		NAME		DATE		SCALE: 1:1		 SHEET 1 OF 1	
CHECKED		D.M.F.		C.B./27/2013					
				4/9/2013					

REV.	DESCRIPTION	ZONE	BY	APPR'D	DATE
REVISIONS					



NOTES:  
1. INCLUDES .031 CLEARANCE

UNLESS OTHERWISE SPECIFIED: DIMENSIONS ARE IN: INCHES[mm] TOLERANCES: ANGULAR: ±2° TWO PLACE DECIMAL: ±.010 THREE PLACE DECIMAL: ±.005 PRINTED GRAPHICS: ±.010	PART NO. WA-37B*16-PCB		<div><div>1305 CHESTER IND. PARKWAY AVON, OHIO 44011-1083 U.S.A. PH#: 1-800-248-1233, 440-934-0444 FAX#: 440-934-0088</div></div>											
	MATERIAL													
	FLAME RATING		SIZE <b>B</b>	PCB TEMPLATE		REV -								
	<table><tr><td></td><td>NAME</td><td>DATE</td></tr><tr><td>DRAWN</td><td>D.M.F.</td><td>3/27/2013</td></tr><tr><td>CHECKED</td><td>C.C.B.</td><td>4/8/2013</td></tr></table>			NAME	DATE	DRAWN	D.M.F.	3/27/2013	CHECKED	C.C.B.	4/8/2013	SCALE: 1:1		SHEET 1 OF 1
	NAME	DATE												
DRAWN	D.M.F.	3/27/2013												
CHECKED	C.C.B.	4/8/2013												
PROPRIETARY AND CONFIDENTIAL THE INFORMATION CONTAINED IN THIS DRAWING IS THE SOLE PROPERTY OF POLYCASE. ANY REPRODUCTION IN PART OR AS A WHOLE WITHOUT THE WRITTEN PERMISSION OF POLYCASE IS PROHIBITED.														
CAD FILE: WA-37B+16-PCB														

REV.	ZONE	DESCRIPTION	BY	APPR'D	DATE
REVISIONS					