

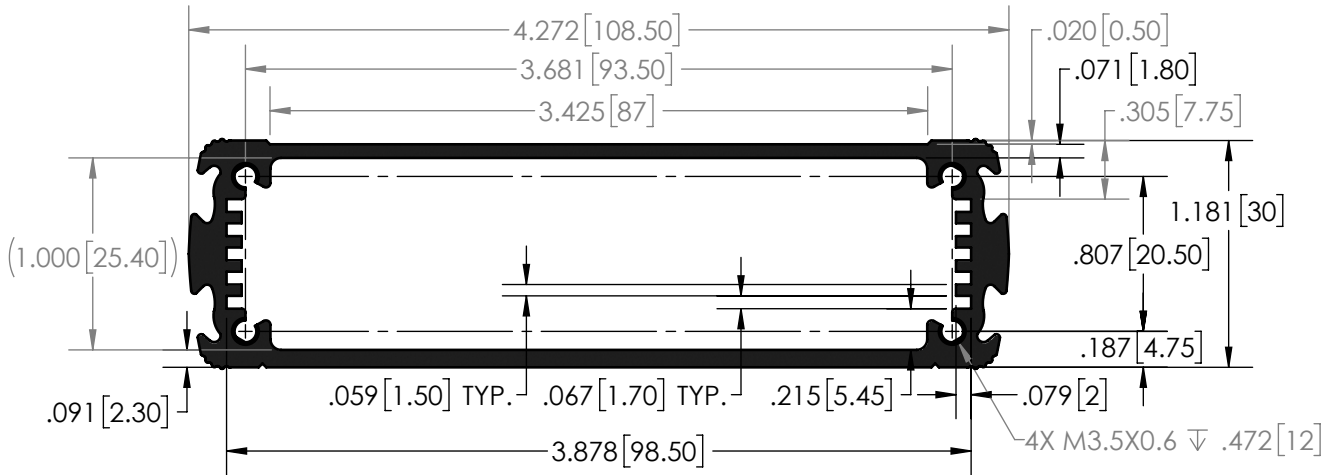
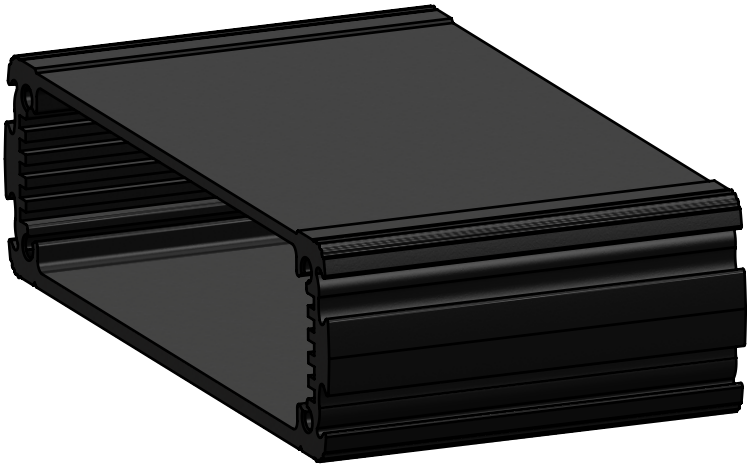



BOM Table						
ITEM NO.	PART NUMBER	Rev.	Description	Material	Color	EX-53-01/QTY.
1	EX-53B-01	-	EXTRUDED BODY, AL, BLACK	6063-T6	BLACK	1
2	EX-53E-01	-	END CAP, AL, BLACK	ALUMINUM ADC12	BLACK	2
3	EX-53G	-	EX GASKET	NEOPRENE	BLACK	2
4	EX-01W	-	WASHER	PC	CLEAR	8
5	EX-01A	-	ADHESIVE BUMPER	RUBBER	BLACK	4
6	EX-01S-01		M3.5-0.6 X 12 PHIL, PAN HD. SCREW	SST		8

UNLESS OTHERWISE SPECIFIED: DIMENSIONS ARE IN: INCHES[mm] TOLERANCES: ANGULAR: ±2° TWO PLACE DECIMAL: ±.010 THREE PLACE DECIMAL: ±.005 PRINTED GRAPHICS: ±.010	PART NO. EX-53-01		 1305 CHESTER IND. PARKWAY AVON, OHIO 44011-1083 U.S.A. PH#: 1-800-248-1233, 440-934-0444 FAX#: 440-934-0088	
	MATERIAL			
PROPRIETARY AND CONFIDENTIAL THE INFORMATION CONTAINED IN THIS DRAWING IS THE SOLE PROPERTY OF POLYCASE. ANY REPRODUCTION IN PART OR AS A WHOLE WITHOUT THE WRITTEN PERMISSION OF POLYCASE IS PROHIBITED. CAD FILE: EX-53	FLAME RATING		SIZE B	REV -
		NAME	DATE	
	DRAWN	D.M.F.	8/1/2017	SCALE: 1:1
	CHECKED	C.C.B.	8/29/2017	
				SHEET 1 OF 1

	LENGTH (mm)	DESCRIPTION	COLOR	MATERIAL
EX-53B-01	60	EXTRUDED BODY, AL, BLACK	BLACK	6063-T6
EX-54B-01	110	EXTRUDED BODY, AL, BLACK	BLACK	6063-T6
EX-55B-01	160	EXTRUDED BODY, AL, BLACK	BLACK	6063-T6



<div>UNLESS OTHERWISE SPECIFIED: DIMENSIONS ARE IN: INCHES[mm] TOLERANCES: ANGULAR: ±° TWO PLACE DECIMAL: ± THREE PLACE DECIMAL: ± PRINTED GRAPHICS: ±</div>						PART NO. AS NOTED			<div><div><div>poly</div><div>case</div></div><div>1305 CHESTER IND. PARKWAY AVON, OHIO 44011-1083 U.S.A. PH#: 1-800-248-1233, 440-934-0444 FAX#: 440-934-0088</div></div>						
						MATERIAL -									
<div>PROPRIETARY AND CONFIDENTIAL THE INFORMATION CONTAINED IN THIS DRAWING IS THE SOLE PROPERTY OF POLYCASE. ANY REPRODUCTION IN PART OR AS A WHOLE WITHOUT THE WRITTEN PERMISSION OF POLYCASE IS PROHIBITED.</div> <div>CAD FILE: EX-53B-55B</div>						FLAME RATING			SIZE A		-		REV -		
								NAME	DATE						
REV.						DRAWN		D.M.F.	8/1/2017	SCALE: 1:1				SHEET 1 OF 1	
DESCRIPTION						CHECKED		C.C.B.	8/29/2017						
REVISIONS															
ZONE		BY	APPR'D	DATE											

REV.	DESCRIPTION	ZONE	BY	APPR'D	DATE
REVISIONS					

5

4

3

2

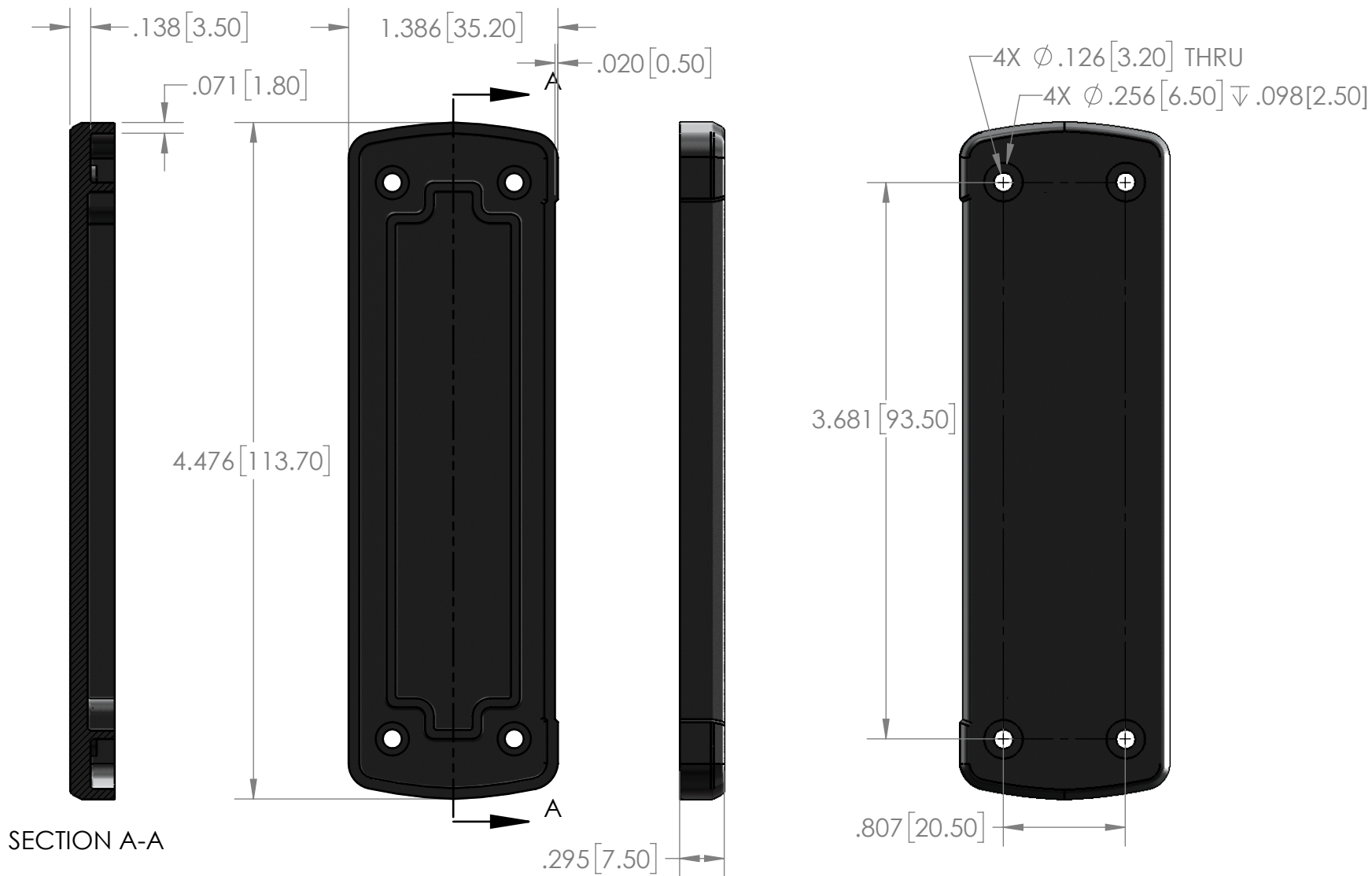
1


D

C

B

A



UNLESS OTHERWISE SPECIFIED: DIMENSIONS ARE IN: INCHES[mm] TOLERANCES: ANGULAR: ±2° TWO PLACE DECIMAL: ±.010 THREE PLACE DECIMAL: ±.005 PRINTED GRAPHICS: ±.010			PART NO. EX-53E-01		<div>polycase</div> <div>1305 CHESTER IND. PARKWAY AVON, OHIO 44011-1083 U.S.A. PH: 1-800-248-1233, 440-934-0444 FAX: 440-934-0088</div>			
			MATERIAL ALUMINUM ADC12					
PROPRIETARY AND CONFIDENTIAL THE INFORMATION CONTAINED IN THIS DRAWING IS THE SOLE PROPERTY OF POLYCASE. ANY REPRODUCTION IN PART OR AS A WHOLE WITHOUT THE WRITTEN PERMISSION OF POLYCASE IS PROHIBITED. CAD FILE: EX-53E			FLAME RATING		SIZE A	END CAP, AL, BLACK	REV -	
				NAME	DATE			
			DRAWN	D.M.F.	8/1/2017			
			CHECKED	C.C.B.	8/29/2017			
						SCALE: 1:1		

REV.	DESCRIPTION	ZONE	BY	APPR'D	DATE
REVISIONS					

5

4

3

2

1