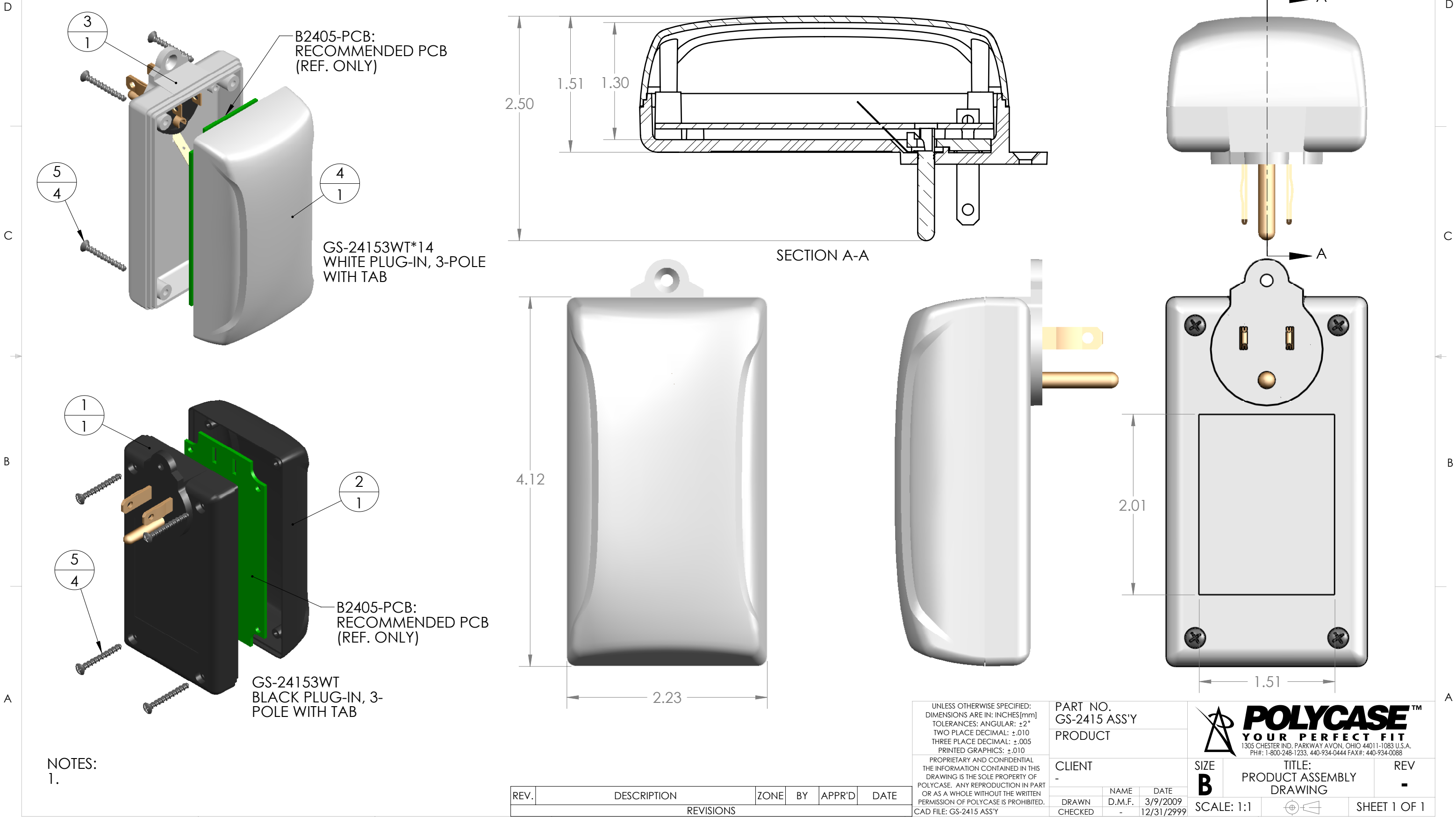
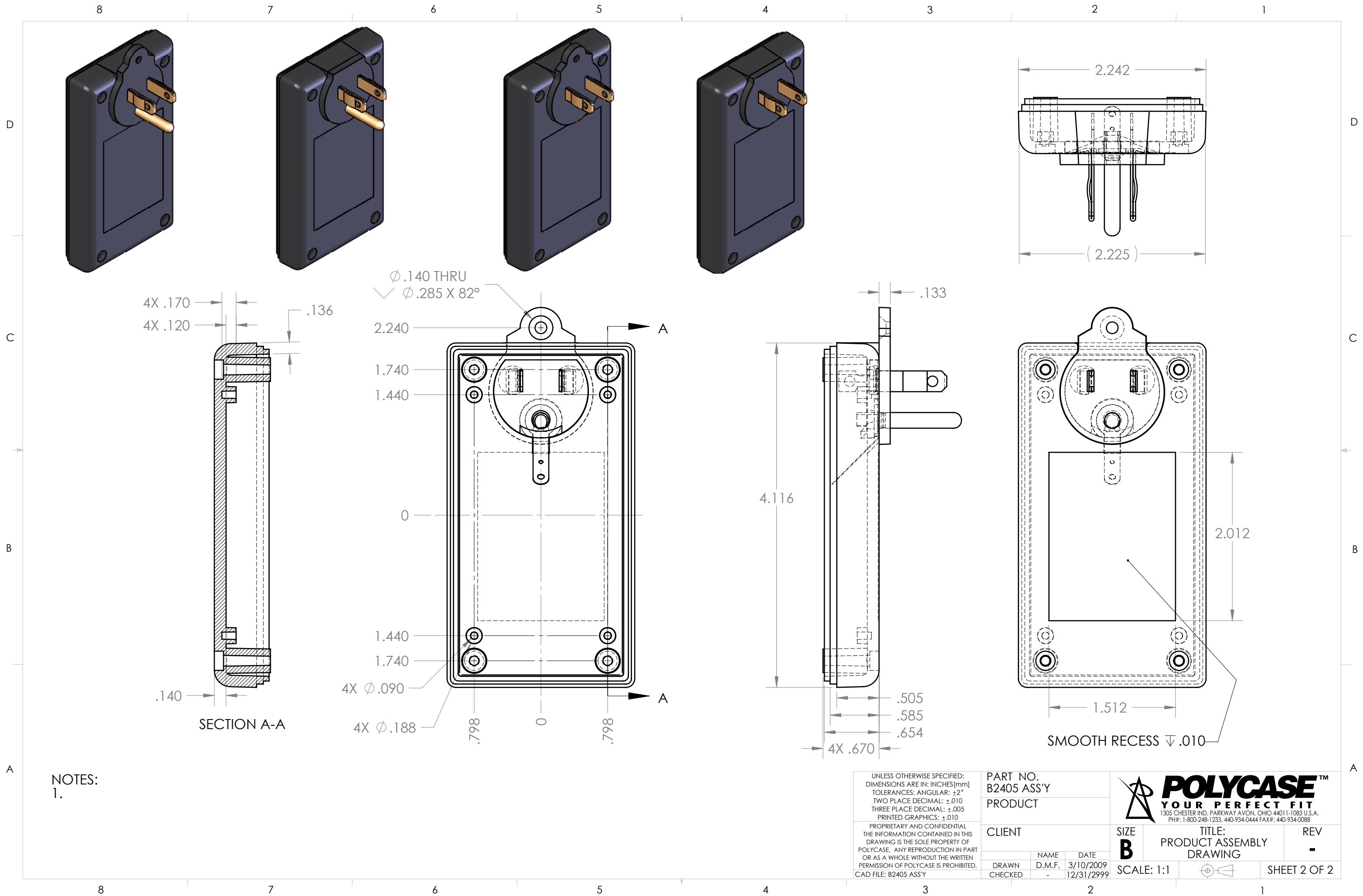


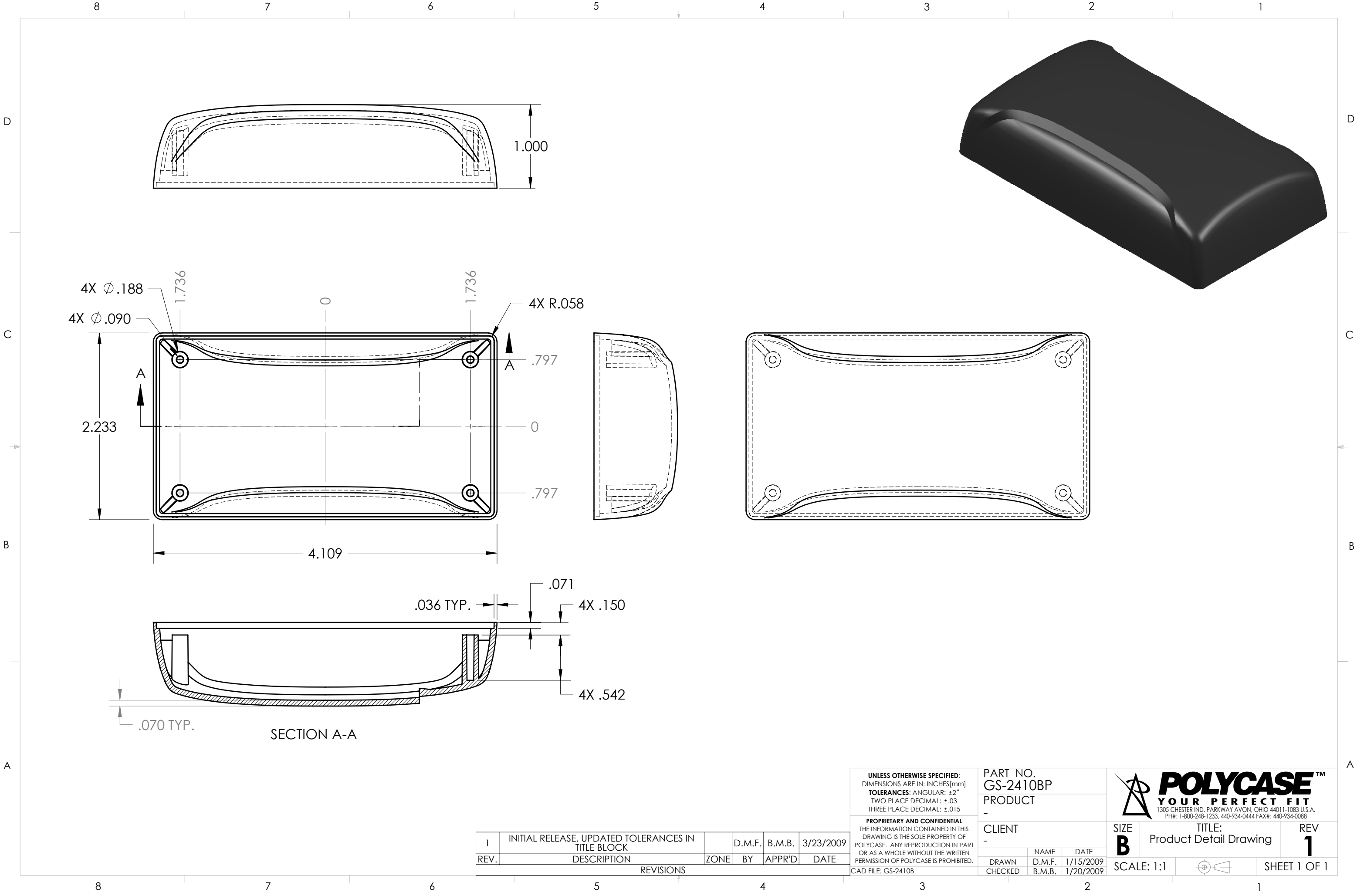


ITEM NO.	PART NUMBER	DESCRIPTION	GS-24153WT/QTY.	GS-24153WT*14/QTY.
1	B24053XWT	BLACK PLUG-IN BASE; 3-POLE WITH TAB	1	-
2	GS-2410BP	CASE, BLACK	1	-
3	B24053XWT*14	WHITE PLUG-IN BASE; 3-POLE WITH TAB	-	1
4	GS-2410BP*14	CASE, WHITE	-	1
5	SCREWS-HL1-BR	THREAD FORMING ASS'Y SCREW: 1.00 INCH	4	4





UNLESS OTHERWISE SPECIFIED: DIMENSIONS ARE IN: INCHES [mm] TOLERANCES: ANGULAR: ±2° TWO PLACE DECIMAL: ±.010 THREE PLACE DECIMAL: ±.005 PRINTED GRAPHICS: ±.010	PART NO. B2405 ASS'Y		<div></div> <div>POLYCASE™ YOUR PERFECT FIT 1305 CHESTER IND. PARKWAY AVON, OHIO 44011-1083 U.S.A. PH#: 1-800-248-1233, 440-934-0444 FAX#: 440-934-0088</div>			
	PRODUCT					
PROPRIETARY AND CONFIDENTIAL THE INFORMATION CONTAINED IN THIS DRAWING IS THE SOLE PROPERTY OF POLYCASE. ANY REPRODUCTION IN PART OR AS A WHOLE WITHOUT THE WRITTEN PERMISSION OF POLYCASE IS PROHIBITED. CAD FILE: B2405 ASS'Y	CLIENT		SIZE B	TITLE: PRODUCT ASSEMBLY DRAWING		REV -
		NAME	DATE			
	DRAWN	D.M.F.	3/10/2009			
	CHECKED	-	12/31/2999			
			SCALE: 1:1			SHEET 2 OF 2



1	INITIAL RELEASE, UPDATED TOLERANCES IN TITLE BLOCK		D.M.F.	B.M.B.	3/23/2009
REV.	DESCRIPTION	ZONE	BY	APPR'D	DATE
REVISIONS					

UNLESS OTHERWISE SPECIFIED:
DIMENSIONS ARE IN: INCHES[mm]
TOLERANCES: ANGULAR: $\pm 2^\circ$
TWO PLACE DECIMAL: $\pm .03$
THREE PLACE DECIMAL: $\pm .015$

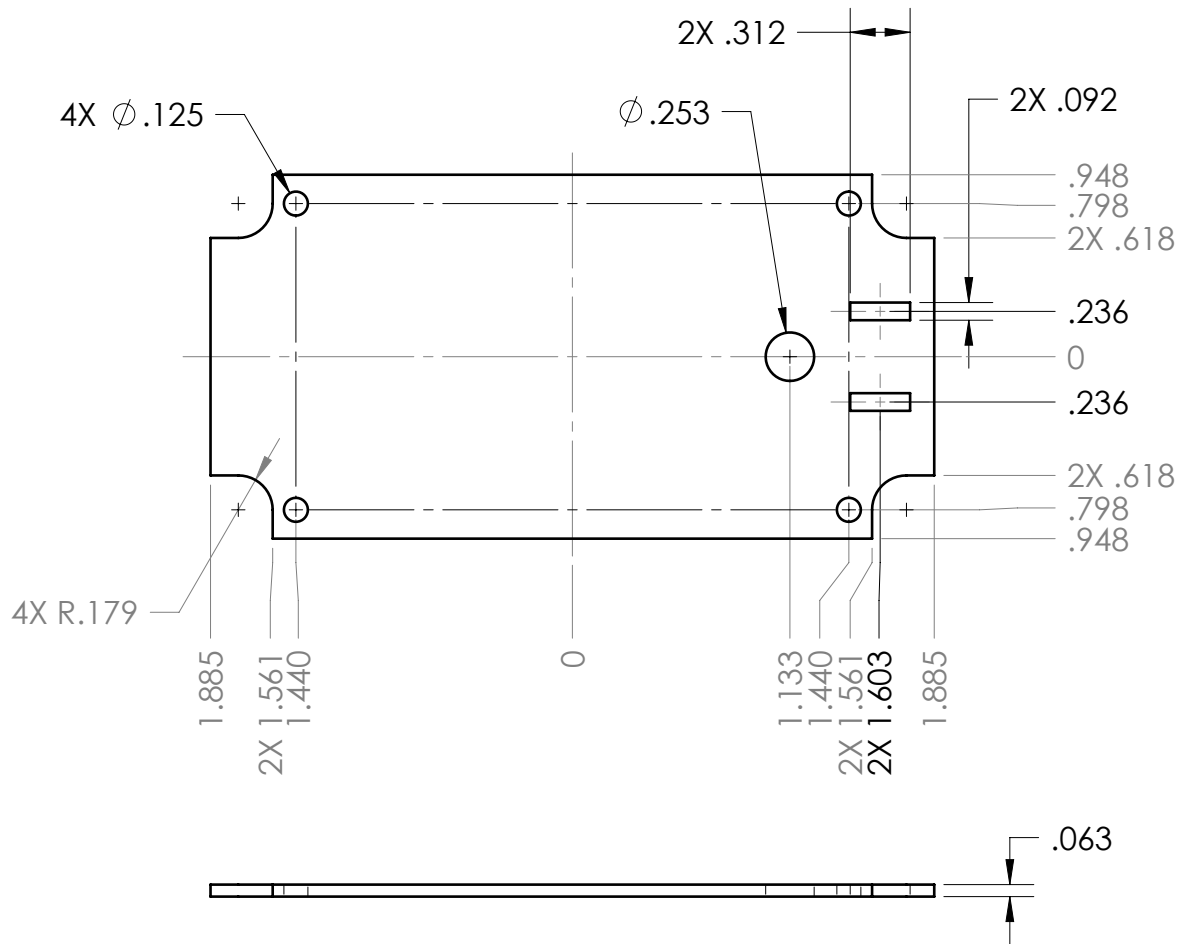
PROPRIETARY AND CONFIDENTIAL
THE INFORMATION CONTAINED IN THIS DRAWING IS THE SOLE PROPERTY OF POLYCASE. ANY REPRODUCTION IN PART OR AS A WHOLE WITHOUT THE WRITTEN PERMISSION OF POLYCASE IS PROHIBITED.

CAD FILE: GS-2410B

PART NO. GS-2410BP		
PRODUCT		
-		
CLIENT		
-		
DRAWN	NAME	DATE
CHECKED	B.M.B.	1/20/2009




SIZE B	TITLE: Product Detail Drawing	REV 1
SCALE: 1:1		SHEET 1 OF 1



NOTES:

1. INCLUDES .031 CLEARANCE WITH INSIDE WALLS, BLADES, GROUND PIN, AND SCREW TOWERS.
2. AN OPTIONAL METHOD OF CONNECTING PCB TO BLADES AND GROUND PIN IS TO DECREASE THE CLEARANCE AROUND THE BLADES AND GROUND PIN AND SOLDER THEM DIRECTLY TO THE PCB.

<div>UNLESS OTHERWISE SPECIFIED: DIMENSIONS ARE IN: INCHES[mm] TOLERANCES: ANGULAR: ±2° TWO PLACE DECIMAL: ±.010 THREE PLACE DECIMAL: ±.005 PRINTED GRAPHICS: ±.010</div> <div>PROPRIETARY AND CONFIDENTIAL THE INFORMATION CONTAINED IN THIS DRAWING IS THE SOLE PROPERTY OF POLYCASE. ANY REPRODUCTION IN PART OR AS A WHOLE WITHOUT THE WRITTEN PERMISSION OF POLYCASE IS PROHIBITED.</div> <div>CAD FILE: B2405-PCB</div>						PART NO. B2405-PCB		<div>POLYCASE™ YOUR PERFECT FIT 1305 CHESTER IND. PARKWAY AVON, OHIO 44011-1083 U.S.A. PH#: 1-800-248-1233, 440-934-0444 FAX#: 440-934-0088</div>			
						PRODUCT -					
						CLIENT -		SIZE A	TITLE: PCB Drawing		REV -
								DRAWN CHECKED	D.M.F. B.M.B.	3/11/2009 3/25/2009	SCALE: 1:1
ZONE	REV.	DESCRIPTION	BY	APPR'D	DATE	<div>REVISIONS</div>					

5

4

3

2

1