

ITEM NO.	PART NUMBER	Revision	DESCRIPTION	MATERIAL
1	BX-23C	1	BX SERIES COVER, BLACK	ABS
2	BX-2310BXX	-	BX SERIES BASE, BLACK, WITHOUT MOUNTING BOSSES	ABS
3	BX-2310BMB	-	BX SERIES BASE, BLACK, WITH MOUNTING BOSSES	ABS

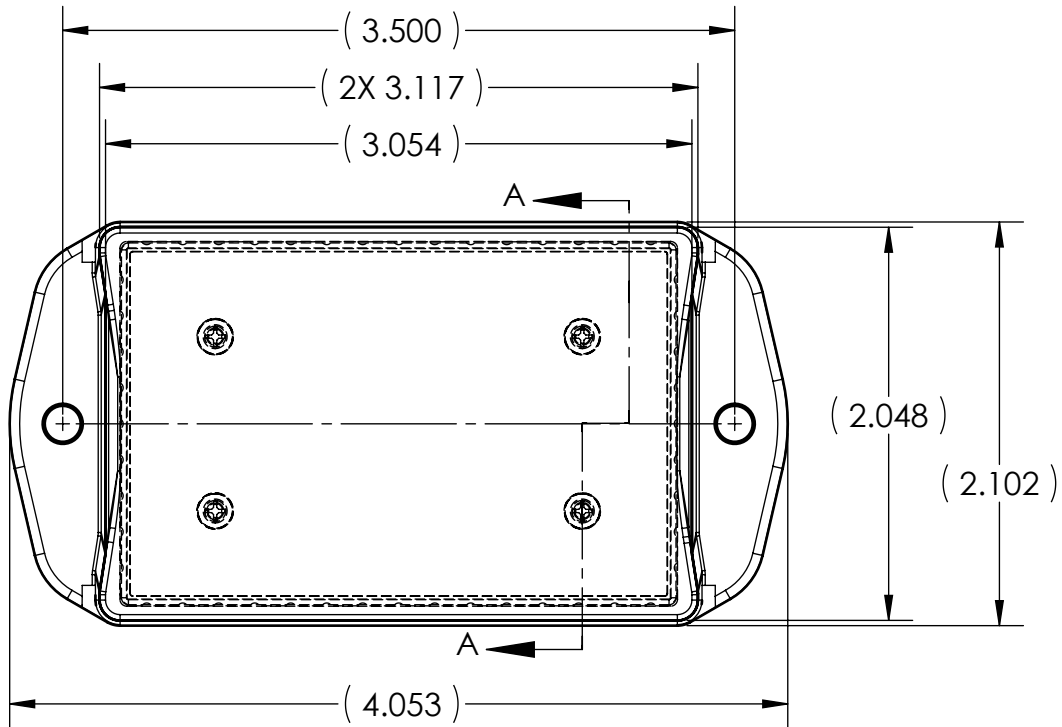
NOTE: ALL COMPONENTS ARE SOLD AND PRICED SEPARATELY. SHOWN ASSEMBLED FOR REFERENCE ONLY.

D

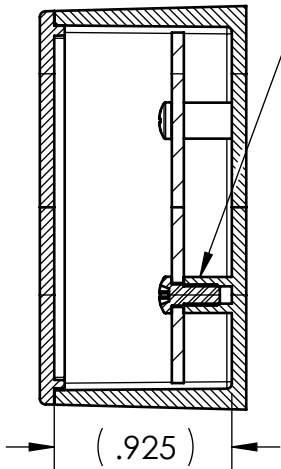
C

B

A



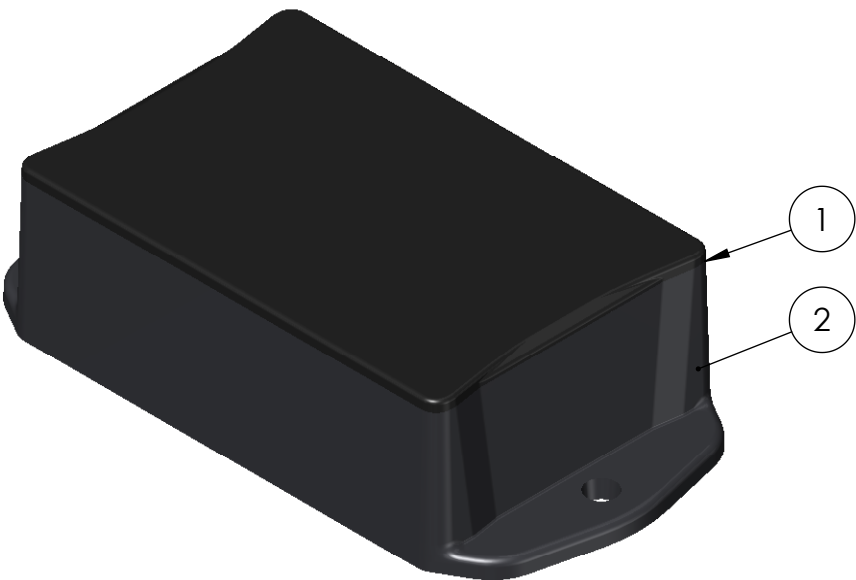
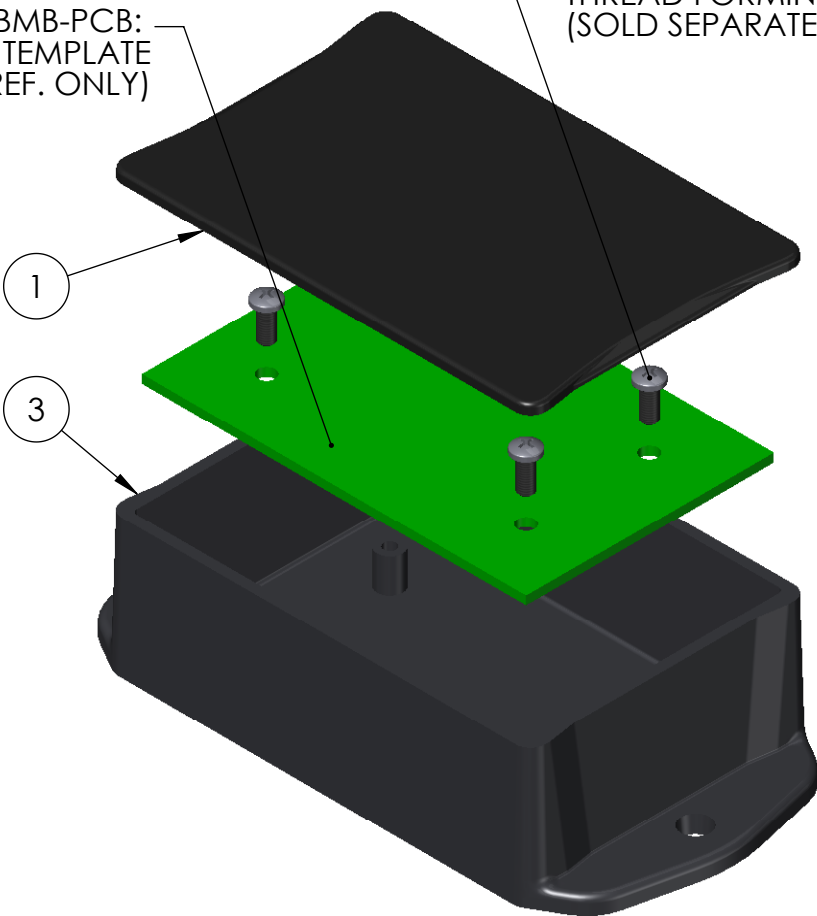
SECTION A-A



4X MOUNTING BOSSES (OPTIONAL)

BX-2310BMB-PCB:  
PCB TEMPLATE  
(REF. ONLY)

SCREWS-MBR:  
PCB SCREW: 4-24 X .25  
THREAD FORMING SCREW  
(SOLD SEPARATELY)



FLAME RATING: UL94V-0

FLAME RATING: UL94V-0

NOTES:  
1. MOUNTING BOSSES ACCEPT A #4 X .25 THREAD FORMING SCREW. SCREWS ARE AVAILABLE FROM POLYCASE.

REV.	DESCRIPTION	ZONE	BY	APPR'D	DATE
REVISIONS					

UNLESS OTHERWISE SPECIFIED:  
DIMENSIONS ARE IN: INCHES [mm]  
TOLERANCES: ANGULAR:  $\pm 2^{\circ}$   
TWO PLACE DECIMAL:  $\pm .030$   
THREE PLACE DECIMAL:  $\pm .015$   
PRINTED GRAPHICS:  $\pm .010$   
PROPRIETARY AND CONFIDENTIAL  
THE INFORMATION CONTAINED IN THIS  
DRAWING IS THE SOLE PROPERTY OF  
POLYCASE. ANY REPRODUCTION IN PART  
OR AS A WHOLE WITHOUT THE WRITTEN  
PERMISSION OF POLYCASE IS PROHIBITED.  
CAD FILE: BX-2310 ASS'Y

PART NO.  
BX-2310 ASS'Y

PRODUCT

CLIENT

DRAWN	NAME	DATE
CHECKED	B.M.B.	12/11/2009

**POLYCASE**<sup>TM</sup>  
YOUR PERFECT FIT  
1305 CHESTER IND. PARKWAY AVON, OHIO 44011-1083 U.S.A.  
PH#: 1-800-248-1233, 440-934-0444 FAX#: 440-934-0088

SIZE  
**B**

TITLE:  
Product Assembly  
Drawing

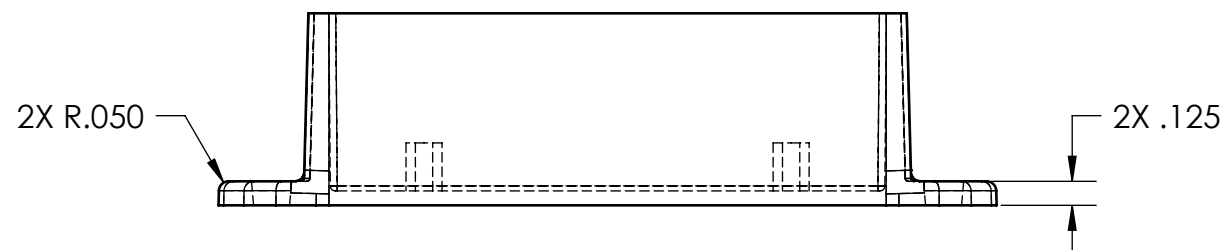
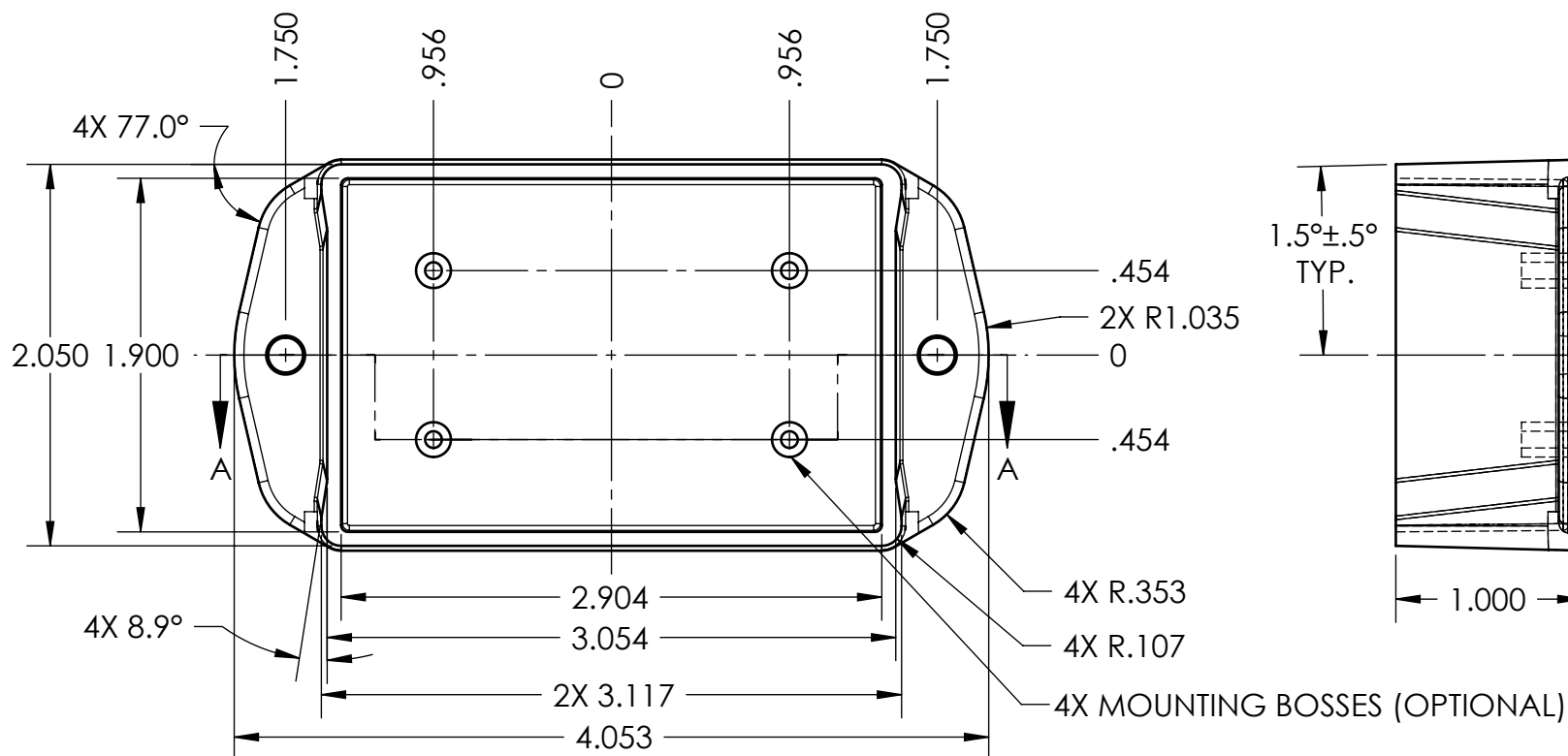
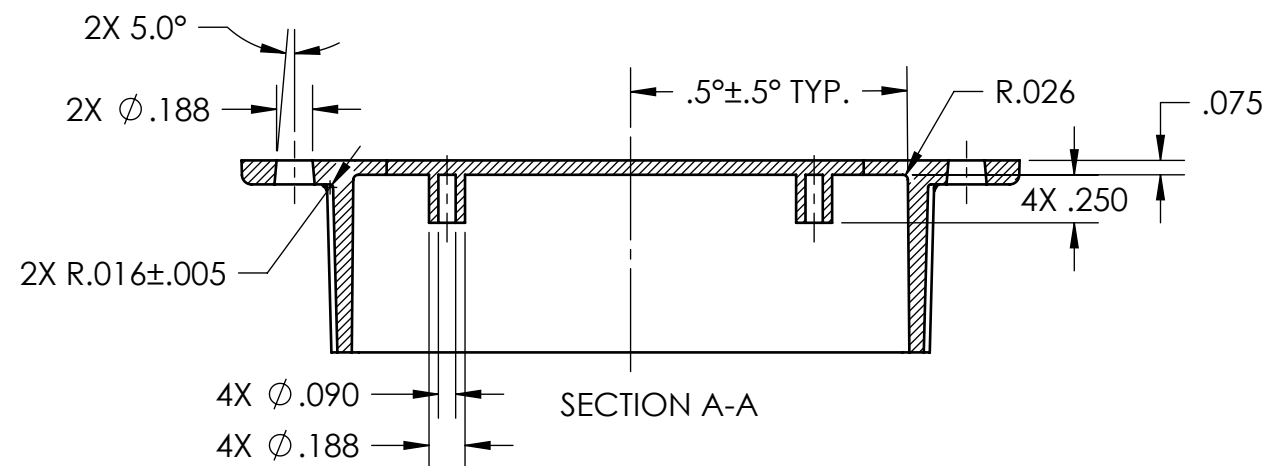
REV  
-

SCALE: 1:1



SHEET 1 OF 1

8 7 6 5 4 3 2 1





BX-2310BMB:  
BX SERIES BASE, BLACK, WITH MOUNTING BOSSES  
MATERIAL: ABS  
FLAME RATING: UL94V-0

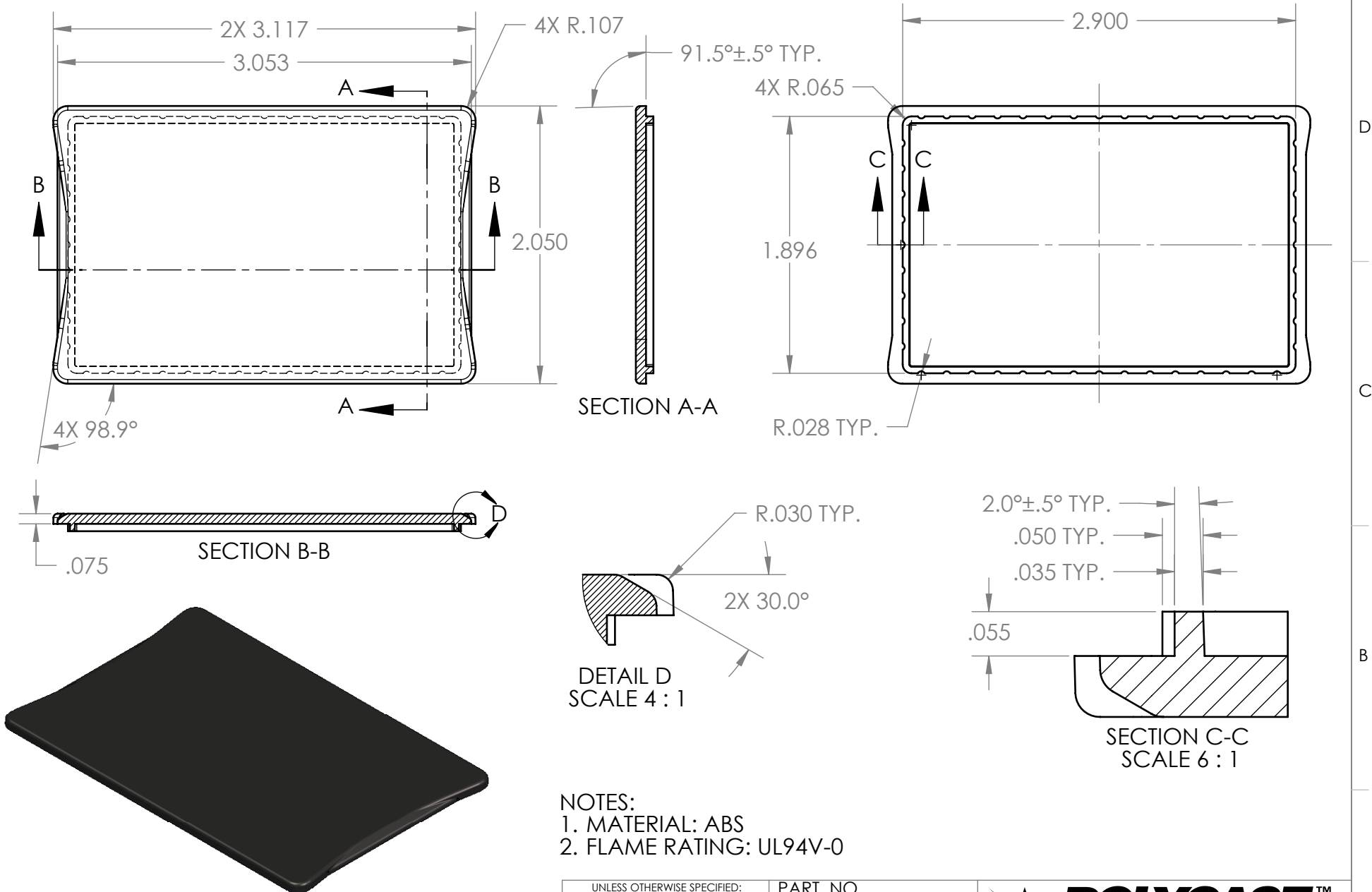


BX-2310BXX:  
BX SERIES BASE, BLACK, WITHOUT MOUNTING BOSSES  
MATERIAL: ABS  
FLAME RATING: UL94V-0



NOTES:  
1. MOUNTING BOSSES ACCEPT A #4 X .25 THREAD FORMING SCREW. SCREWS ARE AVAILABLE FROM POLYCASE.

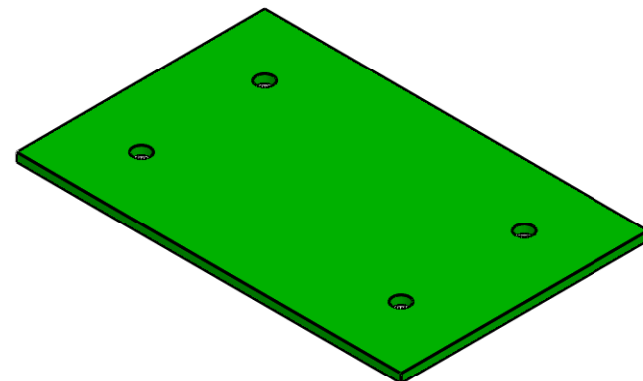
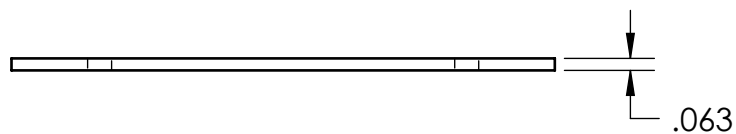
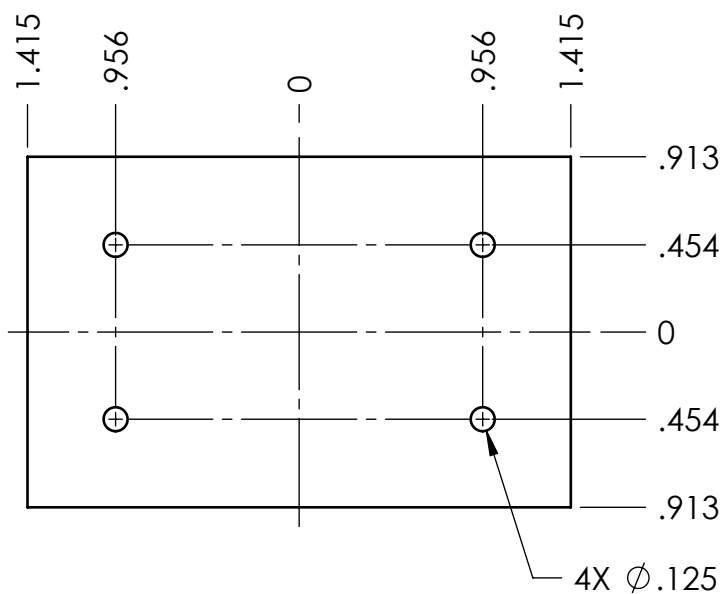
REV.	DESCRIPTION	ZONE	BY	APPR'D	DATE
REVISIONS					

UNLESS OTHERWISE SPECIFIED: DIMENSIONS ARE IN: INCHES [mm] TOLERANCES: ANGULAR: ±2° TWO PLACE DECIMAL: ±.030 THREE PLACE DECIMAL: ±.015 PRINTED GRAPHICS: ±.010	PART NO. BX-2310B		 <b>POLYCASE™</b> YOUR PERFECT FIT 1305 CHESTER IND. PARKWAY AVON, OHIO 44011-1083 U.S.A. PH#: 1-800-248-1233, 440-934-0444 FAX#: 440-934-0088			
	PRODUCT -					
PROPRIETARY AND CONFIDENTIAL THE INFORMATION CONTAINED IN THIS DRAWING IS THE SOLE PROPERTY OF POLYCASE. ANY REPRODUCTION IN PART OR AS A WHOLE WITHOUT THE WRITTEN PERMISSION OF POLYCASE IS PROHIBITED.	CLIENT -		SIZE <b>B</b>	TITLE: Product Detail Drawing	REV -	
		NAME				DATE
	DRAWN	D.M.F.	8/12/2009	SCALE: 1:1		SHEET 1 OF 1
	CHECKED	B.M.B.	12/11/2009			
CAD FILE: BX-2310B						




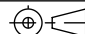
- NOTES:  
1. MATERIAL: ABS  
2. FLAME RATING: UL94V-0

UNLESS OTHERWISE SPECIFIED: DIMENSIONS ARE IN: INCHES[mm] TOLERANCES: ANGULAR: ±2° TWO PLACE DECIMAL: ±.030 THREE PLACE DECIMAL: ±.015 PRINTED GRAPHICS: ±.010	PART NO. BX-23C		<div><div><b>POLYCASE™</b> <b>YOUR PERFECT FIT</b> 1305 CHESTER IND. PARKWAY AVON, OHIO 44011-1083 U.S.A. PH#: 1-800-248-1233, 440-934-0444 FAX#: 440-934-0088</div></div>				
	PRODUCT -						
PROPRIETARY AND CONFIDENTIAL THE INFORMATION CONTAINED IN THIS DRAWING IS THE SOLE PROPERTY OF POLYCASE. ANY REPRODUCTION IN PART OR AS A WHOLE WITHOUT THE WRITTEN PERMISSION OF POLYCASE IS PROHIBITED.  CAD FILE: BX-23C	CLIENT -		SIZE <b>A</b>	TITLE: Product Detail Drawing		REV <b>1</b>	
		NAME					DATE
	DRAWN	D.M.F.	7/30/2009	SCALE: 1:1 <div></div> SHEET 1 OF 1			
	CHECKED	B.M.B.	8/13/2009				



# NOTES:

1. INCLUDES .031 CLEARANCE WITH THE INTERIOR OF BX-2310BMB WHEN UTILIZING THE MOUNTING BOSSES.

<div>UNLESS OTHERWISE SPECIFIED: DIMENSIONS ARE IN: INCHES[mm] TOLERANCES: ANGULAR: ±2° TWO PLACE DECIMAL: ±.010 THREE PLACE DECIMAL: ±.005 PRINTED GRAPHICS: ±.010</div> <div>PROPRIETARY AND CONFIDENTIAL THE INFORMATION CONTAINED IN THIS DRAWING IS THE SOLE PROPERTY OF POLYCASE. ANY REPRODUCTION IN PART OR AS A WHOLE WITHOUT THE WRITTEN PERMISSION OF POLYCASE IS PROHIBITED.</div> <div>CAD FILE: BX-2310BMB-PCB</div>						PART NO. BX-2310BMB-PCB		<div><div><b>POLYCASE</b><sup>TM</sup> YOUR PERFECT FIT</div><div>1305 CHESTER IND. PARKWAY AVON, OHIO 44011-1083 U.S.A. PH#: 1-800-248-1233, 440-934-0444 FAX#: 440-934-0088</div></div>				
						PRODUCT -						
						CLIENT -		SIZE <b>A</b>	TITLE: PCB Template		REV -	
						DRAWN B.M.B.		D.M.F.	8/24/2009		12/11/2009	
CHECKED B.M.B.				SCALE: 1:1				SHEET 1 OF 1				

ZONE	REV.	DESCRIPTION	BY	APPR'D	DATE
REVISIONS					

ZONE	REV.	DESCRIPTION	BY	APPR'D	DATE
REVISIONS					

5

4

3

2

1