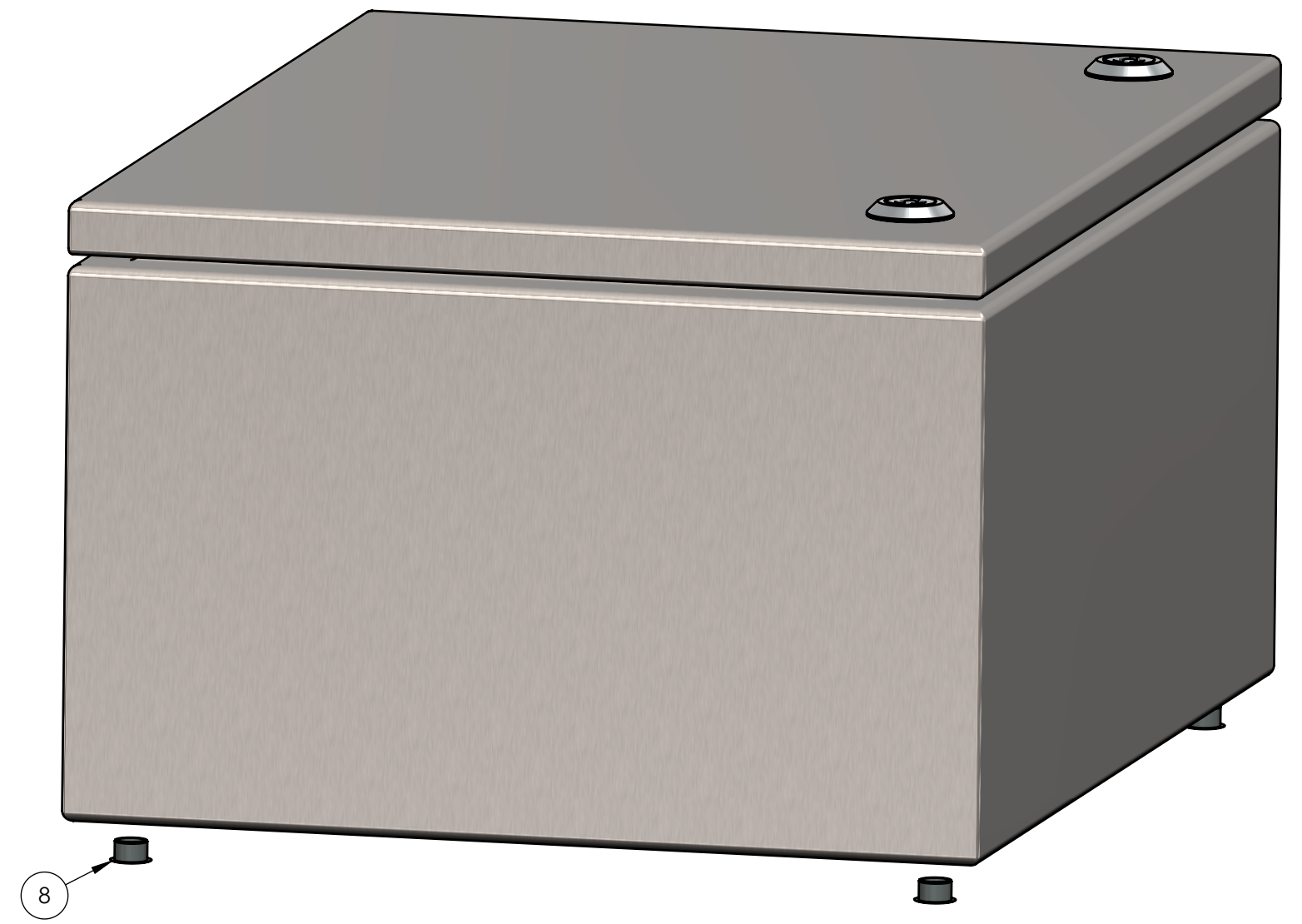


BOM Table

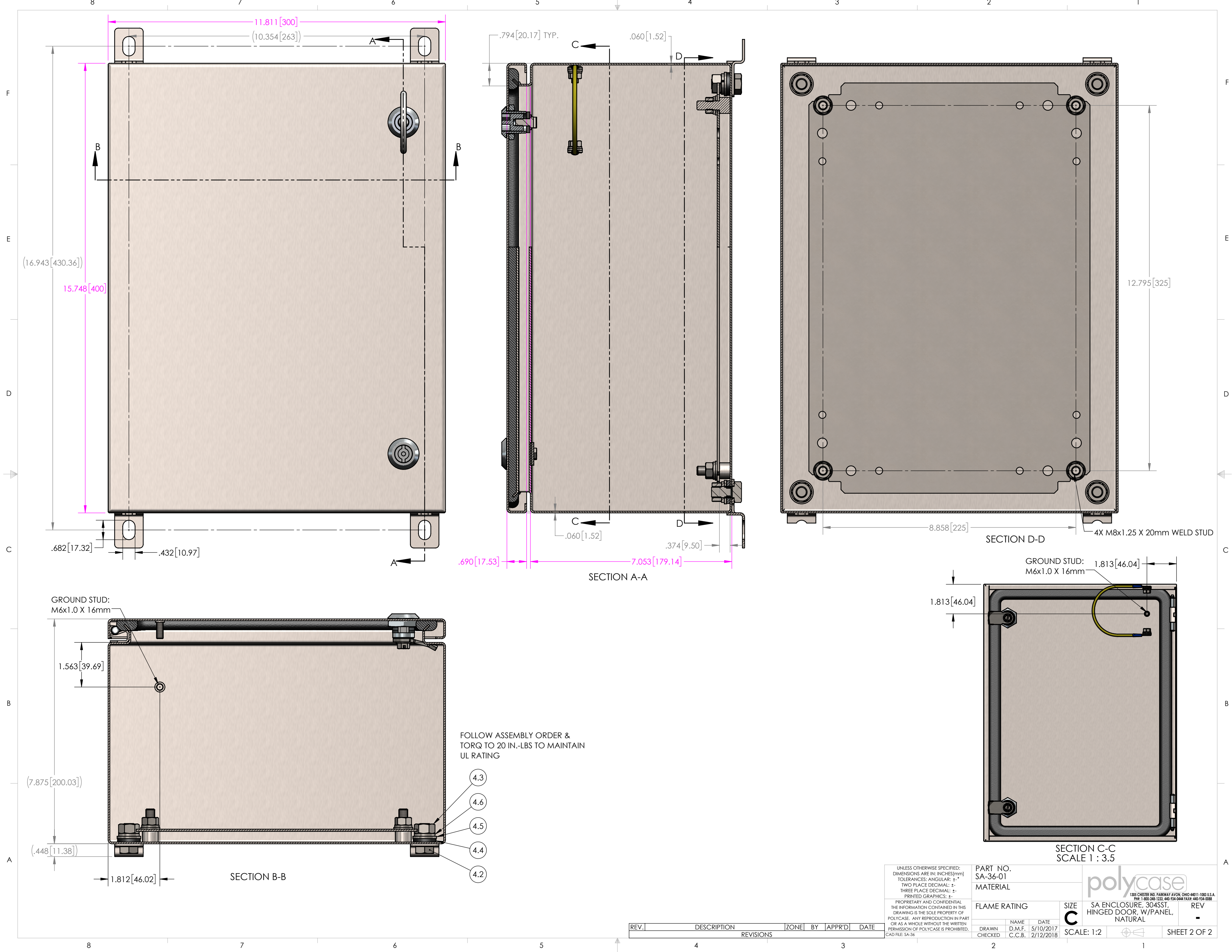
ITEM NO.	PART NUMBER	Rev.	Description	Material	Color	QTY.
1	SA-35C-01	-	COVER, HINGED	304SST	NATURAL	1
2	SA-36B-01	-	BASE, HINGED	304SST	NATURAL	1
3	SB-35P	-	MOUNTING PANEL	Zinc-Plated Steel	-	1
4	SB-01FK-01	-	FLANGE KIT			1
4.1	SB-01F-01	-	MTG. FLANGE	430 SST	-	4
4.2	SCREWS-040	-	M10 x 1.5 x 20 HEX HEAD SCREW	SST		4
4.3	N-003	-	M10x1.5 HEX NUT	SST		4
4.4	W-005	-	SEALING WASHER	NEOPRENE	BLACK	4
4.5	W-006	-	M10 FLAT WASHER	SST		4
4.6	W-007	-	M10 SPRING LOCK WASHER	SST		4
5	SB-PIN-01	-	HINGE PIN	201 SST	-	2
6	SB-RR-01	-	RETAINING RING	SST		2
7	SB-GK-02	-	GROUND WIRE & KEY KIT			1
7.1	SB-KEY-01	-	LATCH KEY		-	1
7.2	SB-WIRE-01	-	GROUND WIRE		-	1
7.3	W-010	-	M6 WASHER SST	SST		4
7.4	W-011	-	M6 SPRING LOCK WASHER, SST	SST		2
7.5	N-005	-	M6x1.0 HEX NUT, SST	SST		2
8	SB-HP-01	-	HOLE PLUG	NEOPRENE	LIGHT GRAY	4
9	W-008	-	M8 FLAT WASHER	SST		4
10	W-009	-	M8 SPRING LOCK WASHER	SST		4
11	N-004	-	M8x1.25 HEX NUT	SST		4
12	SB-01L-02	-	LATCH ASSEMBLY			2
12.1	SB-01LB-02	-	LATCH BODY	SST	NATURAL	1
12.2	SB-01LN-02	-	LATCH NUT	SST		1



NOTES:
 1. UL LISTED UL508A. UL FILE #E194432

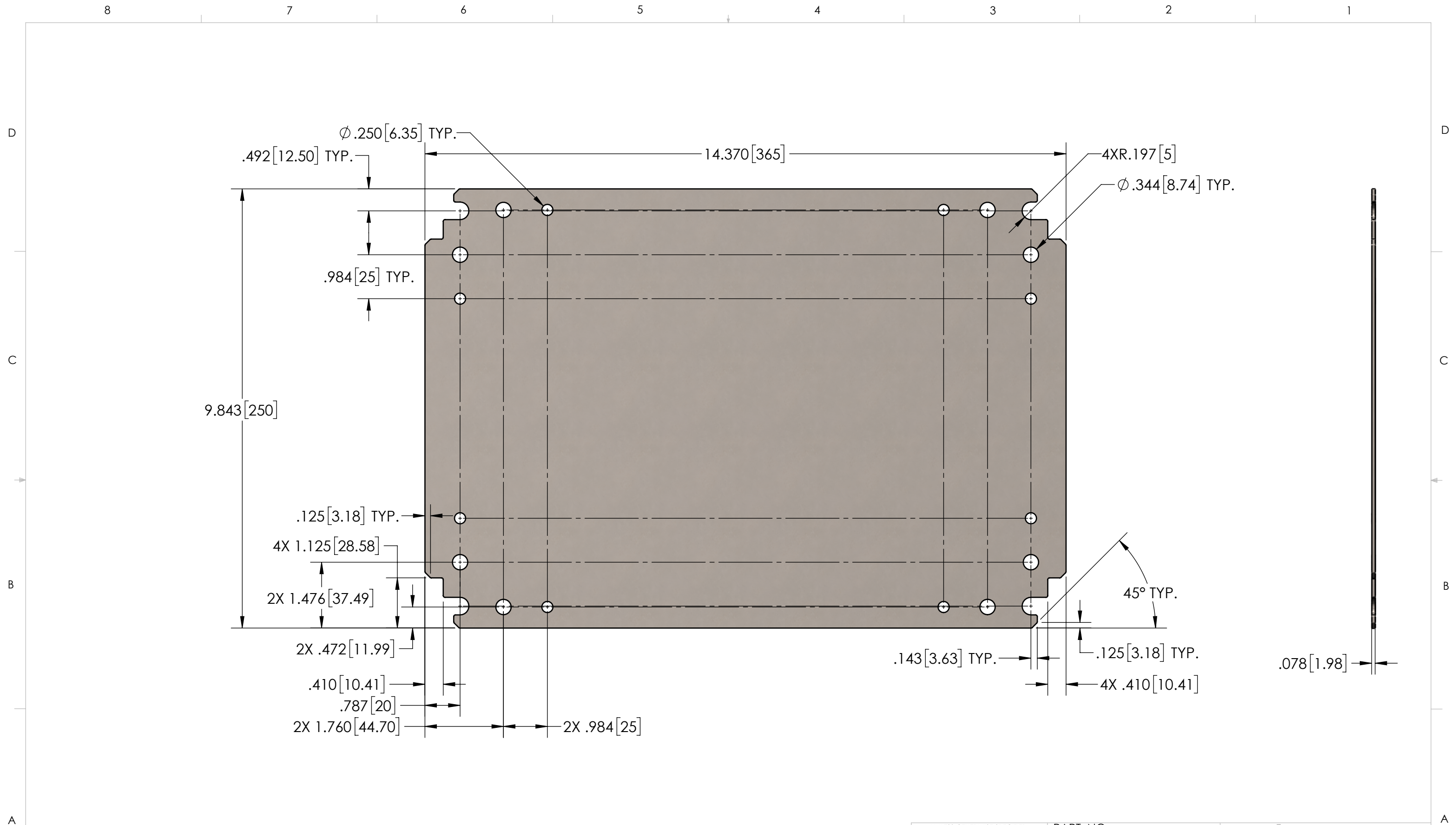
REV.	DESCRIPTION	ZONE	BY	APPR'D	DATE
REVISIONS					

UNLESS OTHERWISE SPECIFIED: DIMENSIONS ARE IN: INCHES[mm] TOLERANCES: ANGULAR: ±.° TWO PLACE DECIMAL: ±. THREE PLACE DECIMAL: ±. PRINTED GRAPHICS: ±.		PART NO. SA-36-01		 <small>1305 CHESTER RD. PARKWAY AVON, OHIO 44011-1083 U.S.A. PHF: 1-800-248-1233 440-934-0444 FAX: 440-934-0088</small>	
PROPRIETARY AND CONFIDENTIAL THE INFORMATION CONTAINED IN THIS DRAWING IS THE SOLE PROPERTY OF POLYCASE. ANY REPRODUCTION IN PART OR AS A WHOLE WITHOUT THE WRITTEN PERMISSION OF POLYCASE IS PROHIBITED. CAD FILE: SA-36		MATERIAL			
FLAME RATING		SIZE C		SA ENCLOSURE, 304SST, HINGED DOOR, W/PANEL, NATURAL	
DRAWN CHECKED		NAME DATE D.M.F. 5/10/2017 C.C.B. 2/12/2018		SCALE: 1:2	
				SHEET 1 OF 2	



UNLESS OTHERWISE SPECIFIED: DIMENSIONS ARE IN: INCHES[mm] TOLERANCES: ANGULAR: ± .1° TWO PLACE DECIMAL: ± .01 THREE PLACE DECIMAL: ± .005 PRINTED GRAPHICS: ± .005		PART NO. SA-36-01		MATERIAL	
PROPRIETARY AND CONFIDENTIAL THE INFORMATION CONTAINED IN THIS DRAWING IS THE SOLE PROPERTY OF POLYCASE. ANY REPRODUCTION IN PART OR AS A WHOLE WITHOUT THE WRITTEN PERMISSION OF POLYCASE IS PROHIBITED. CAD FILE: SA-36		FLAME RATING	SIZE C	NAME D.M.F. C.C.B.	DATE 5/10/2017 2/12/2018
DRAWN CHECKED		SA ENCLOSURE, 304SST, HINGED DOOR, W/PANEL, NATURAL	SCALE: 1:2	REV	SHEET 2 OF 2

REV.	DESCRIPTION	ZONE	BY	APPR'D	DATE
REVISIONS					



UNLESS OTHERWISE SPECIFIED: DIMENSIONS ARE IN: INCHES[mm] TOLERANCES: ANGULAR: ±° TWO PLACE DECIMAL: ± THREE PLACE DECIMAL: ± PRINTED GRAPHICS: ±	PART NO. SB-35P		 <small>1305 CHESTER IND. PARKWAY AVON, OHIO 44011-1083 U.S.A. PH#: 1-800-248-1233, 440-934-0444 FAX#: 440-934-0088</small>																		
	MATERIAL Zinc-Plated Steel																				
	FLAME RATING	SIZE B	MOUNTING PANEL																		
PROPRIETARY AND CONFIDENTIAL THE INFORMATION CONTAINED IN THIS DRAWING IS THE SOLE PROPERTY OF POLYCASE. ANY REPRODUCTION IN PART OR AS A WHOLE WITHOUT THE WRITTEN PERMISSION OF POLYCASE IS PROHIBITED. CAD FILE: SB-35P	REV -	SCALE: 1:2	SHEET 1 OF 1																		
<table border="1"> <thead> <tr> <th>REV.</th> <th>DESCRIPTION</th> <th>ZONE</th> <th>BY</th> <th>APPR'D</th> <th>DATE</th> </tr> </thead> <tbody> <tr> <td colspan="6" style="text-align: center;">REVISIONS</td> </tr> </tbody> </table>	REV.	DESCRIPTION	ZONE	BY	APPR'D	DATE	REVISIONS						<table border="1"> <thead> <tr> <th>NAME</th> <th>DATE</th> </tr> </thead> <tbody> <tr> <td>D.M.F.</td> <td>5/9/2017</td> </tr> <tr> <td>C.C.B.</td> <td>6/1/2017</td> </tr> </tbody> </table>	NAME	DATE	D.M.F.	5/9/2017	C.C.B.	6/1/2017		
REV.	DESCRIPTION	ZONE	BY	APPR'D	DATE																
REVISIONS																					
NAME	DATE																				
D.M.F.	5/9/2017																				
C.C.B.	6/1/2017																				