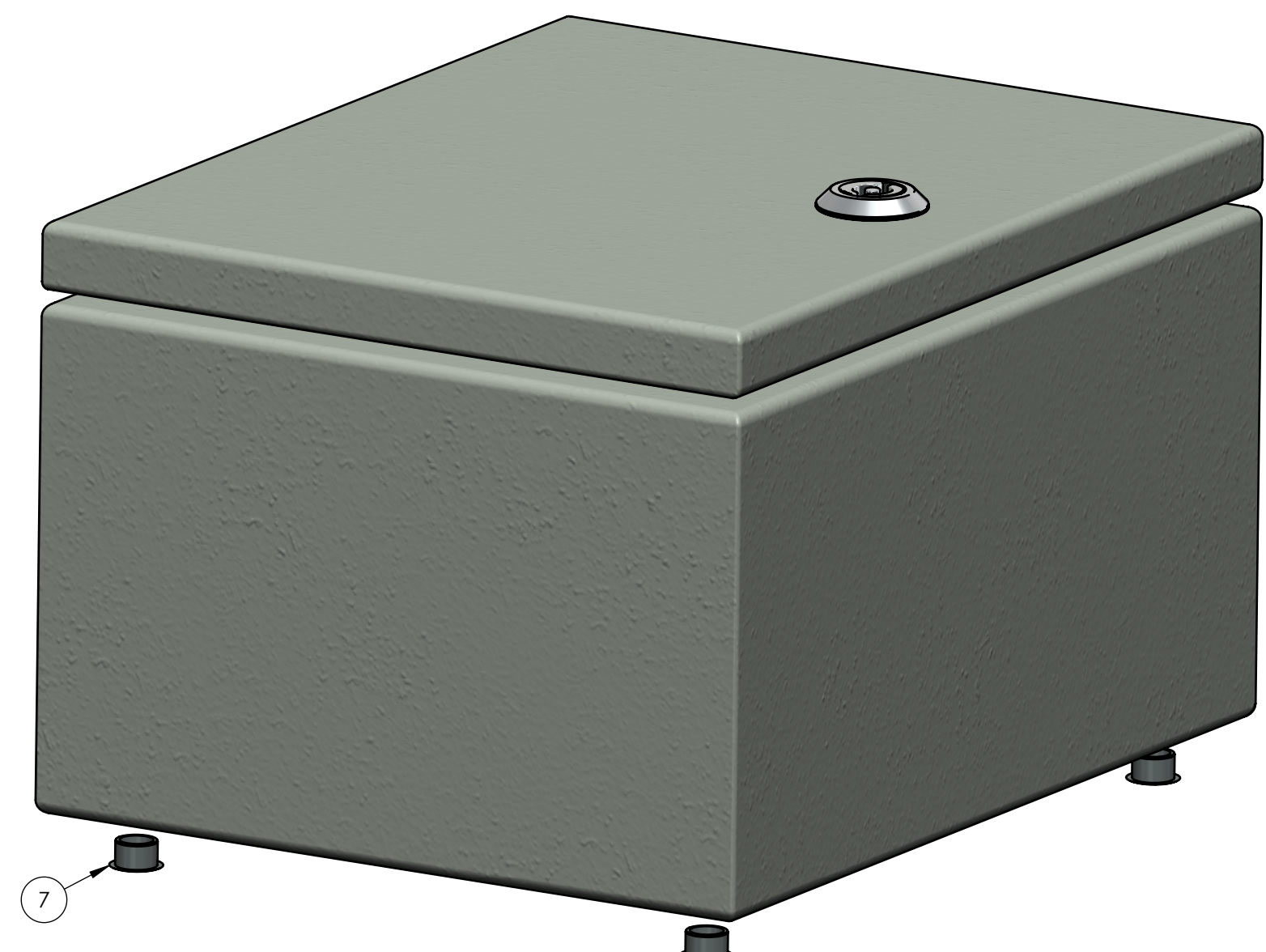
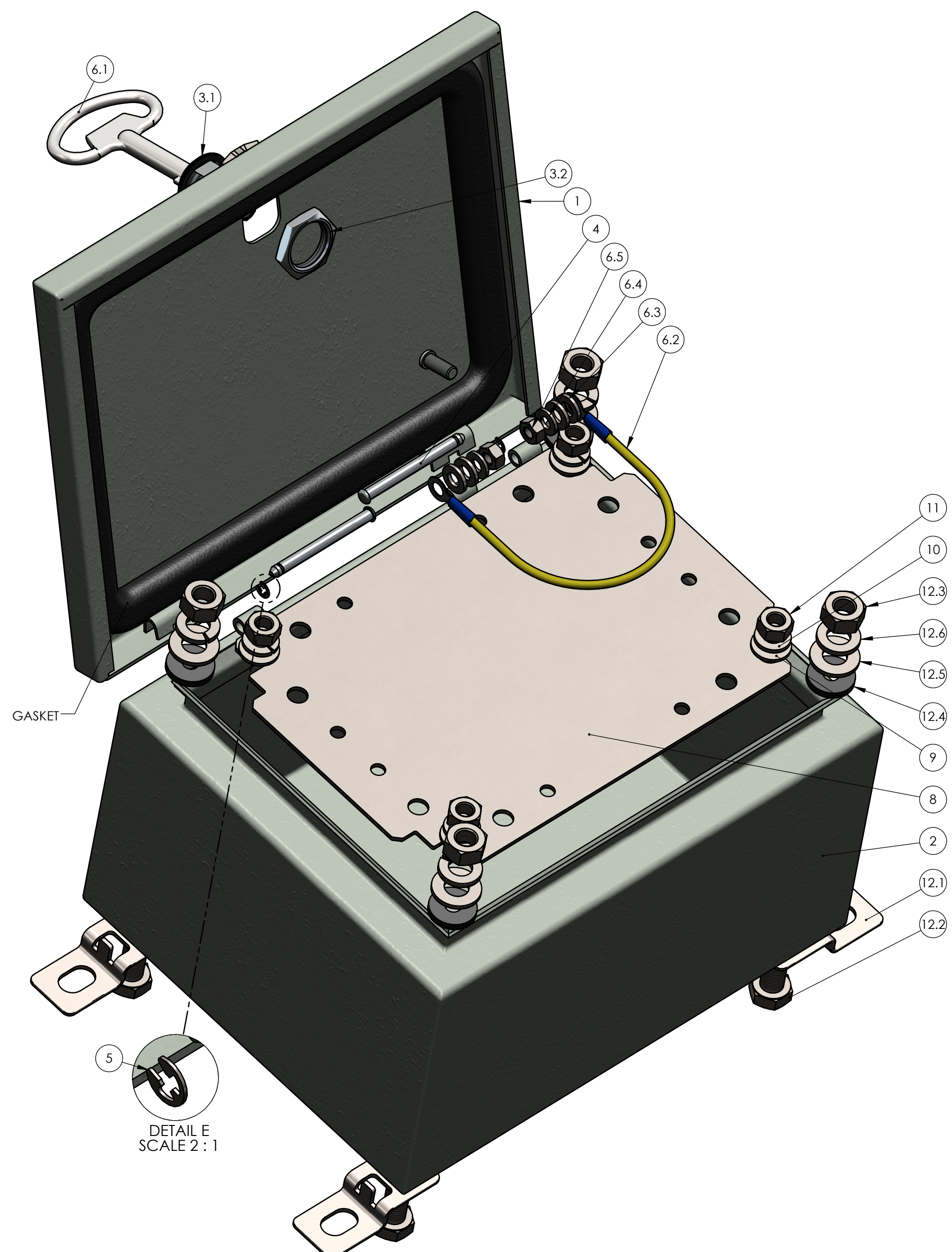


8 7 6 5 4 3 2 1

BOM Table						
ITEM NO.	PART NUMBER	Rev.	Description	Material	Color	QTY.
1	SB-30C-02	-	COVER, HINGED	STEEL	LIGHT GRAY	1
2	SB-30B-02	-	BASE, HINGED	STEEL	LIGHT GRAY	1
3	SB-01L-01	-	LATCH ASSEMBLY			1
3.1	SB-01LB-01	-	LATCH BODY	Zinc-Plated Steel	CHROME	1
3.2	SB-01LN-01	-	LATCH NUT	Zinc-Plated Steel		1
4	SB-PIN-01	-	HINGE PIN	201 SST	-	2
5	SB-RR-01	-	RETAINING RING	SST		2
6	SB-GK-01	-	GROUND WIRE & KEY KIT			1
6.1	SB-KEY-01	-	LATCH KEY		-	1
6.2	SB-WIRE-01	-	GROUND WIRE		-	1
6.3	W-003	-	M6 WASHER	ZINC PLATED		4
6.4	W-004	-	M6 SPRING LOCK WASHER	ZINC PLATED		2
6.5	N-002	-	M6x1.0 HEX NUT	ZINC PLATED		2
7	SB-HP-01	-	HOLE PLUG	NEOPRENE	LIGHT GRAY	4
8	SB-30P	-	MOUNTING PANEL	Zinc-Plated Steel		1
9	W-008	-	M8 FLAT WASHER	SST		4
10	W-009	-	M8 SPRING LOCK WASHER	SST		4
11	N-004	-	M8x1.25 HEX NUT	SST		4
12	SB-01FK-01	-	FLANGE KIT			1
12.1	SB-01F-01	-	MTG. FLANGE	430 SST	-	4
12.2	SCREWS-040	-	M10 x 1.5 x 20 HEX HEAD SCREW	SST		4
12.3	N-003	-	M10x1.5 HEX NUT	SST		4
12.4	W-005	-	SEALING WASHER	NEOPRENE	BLACK	4
12.5	W-006	-	M10 FLAT WASHER	SST		4
12.6	W-007	-	M10 SPRING LOCK WASHER	SST		4

F
E
D
C
B
A

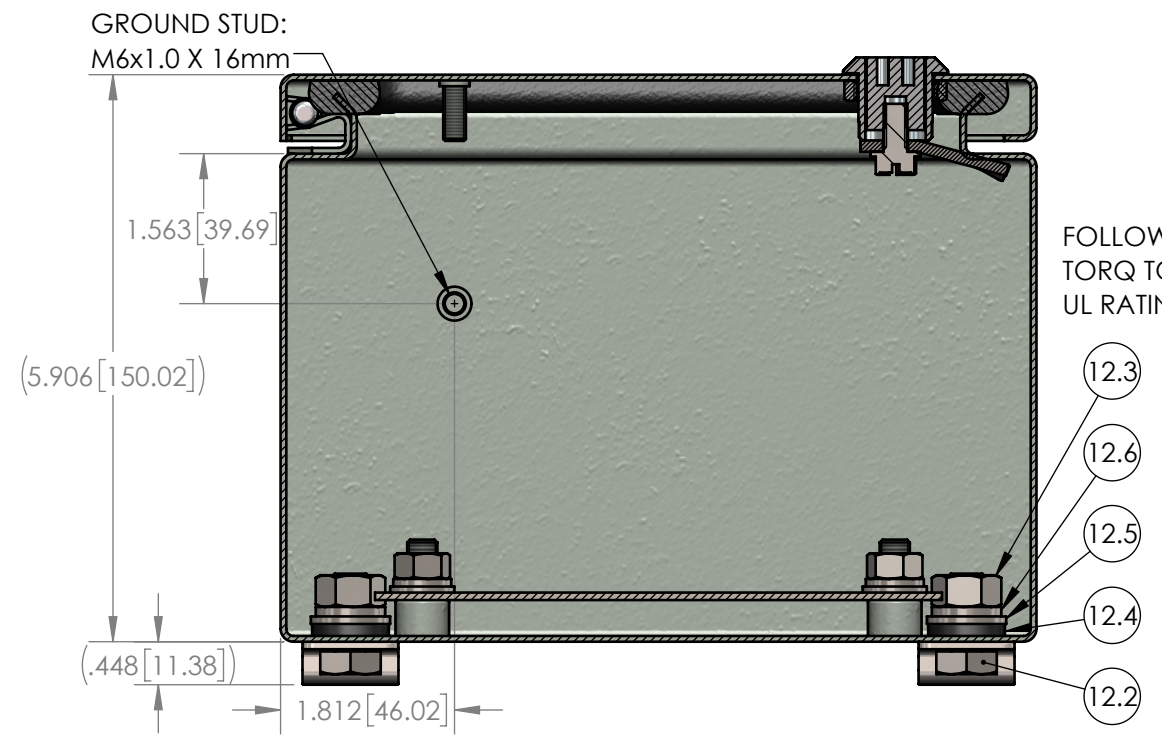
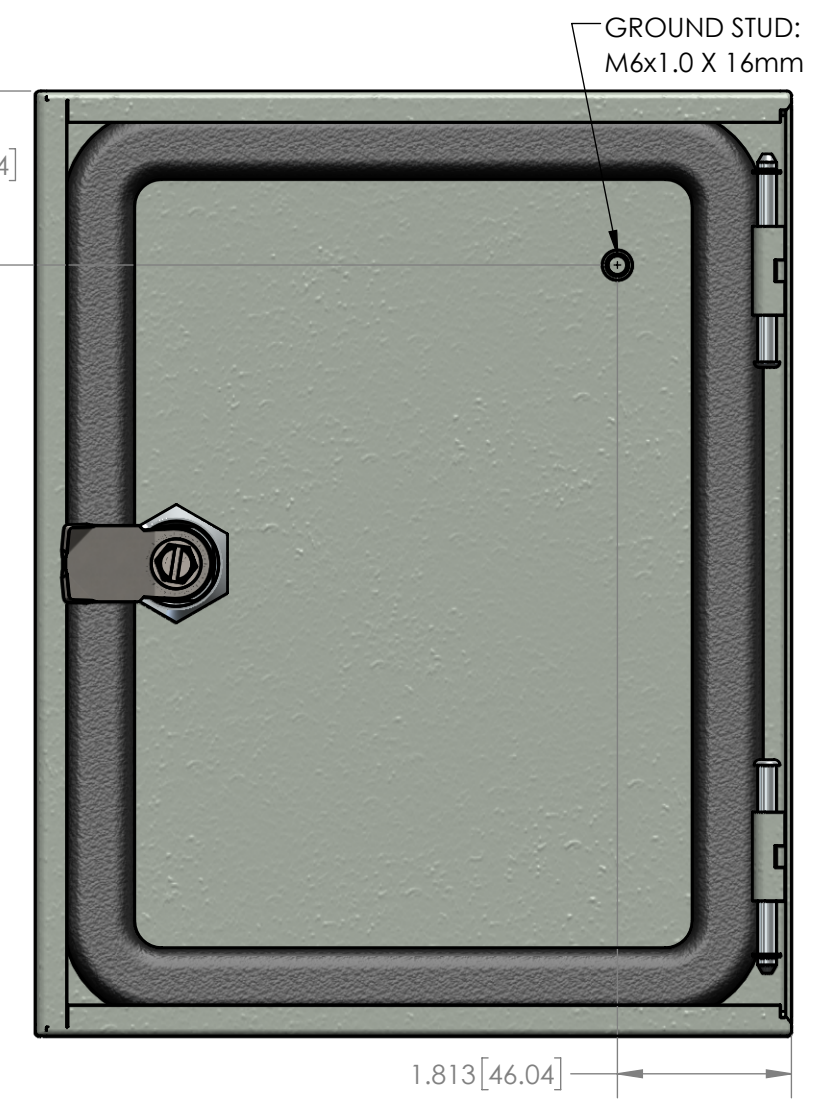
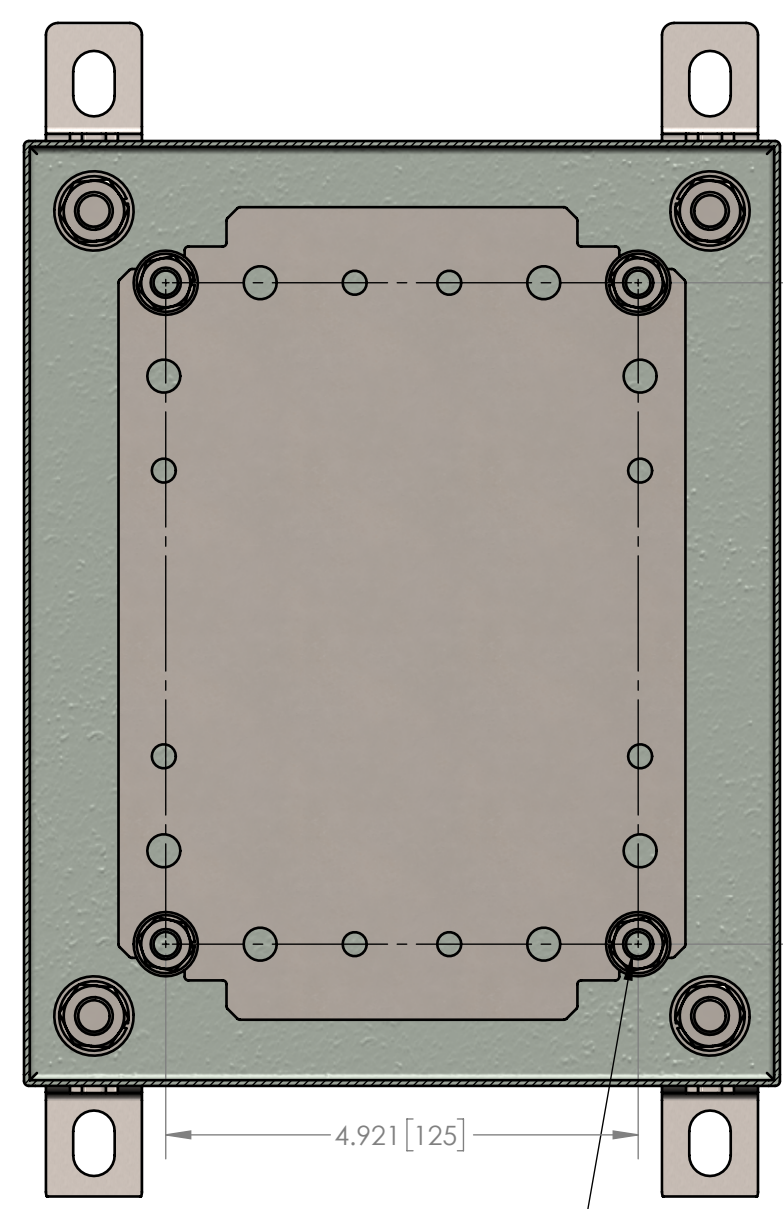
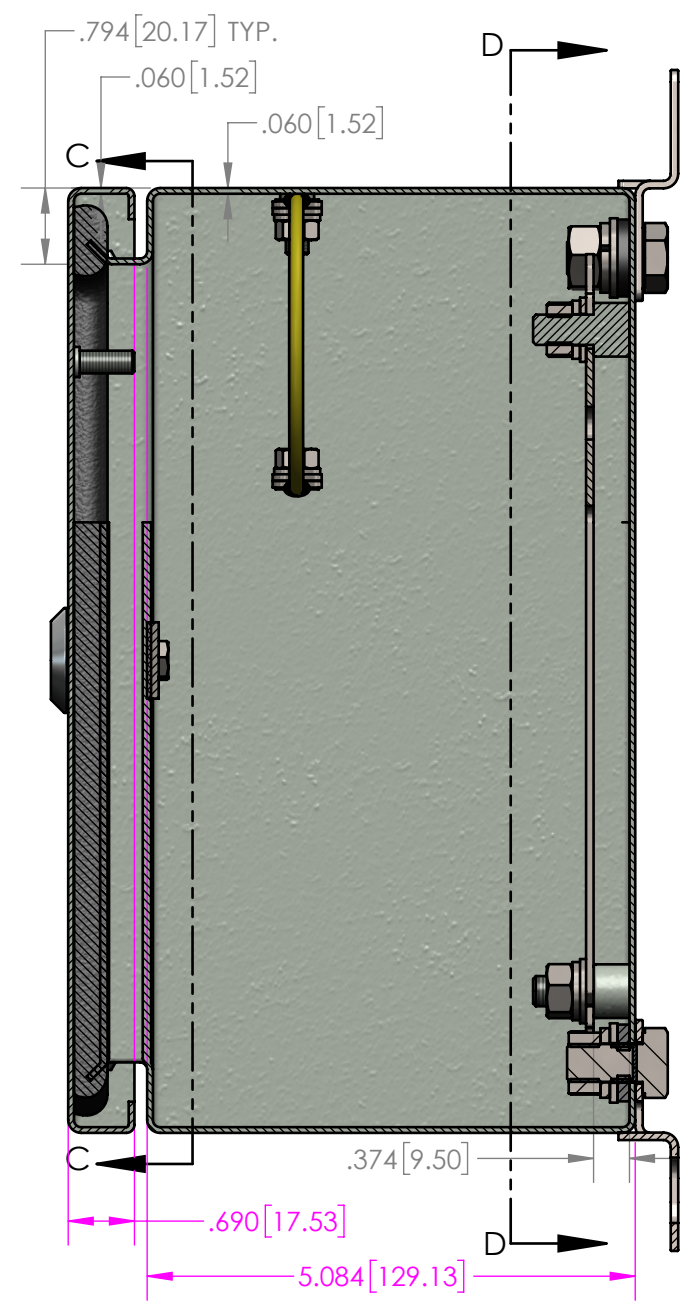
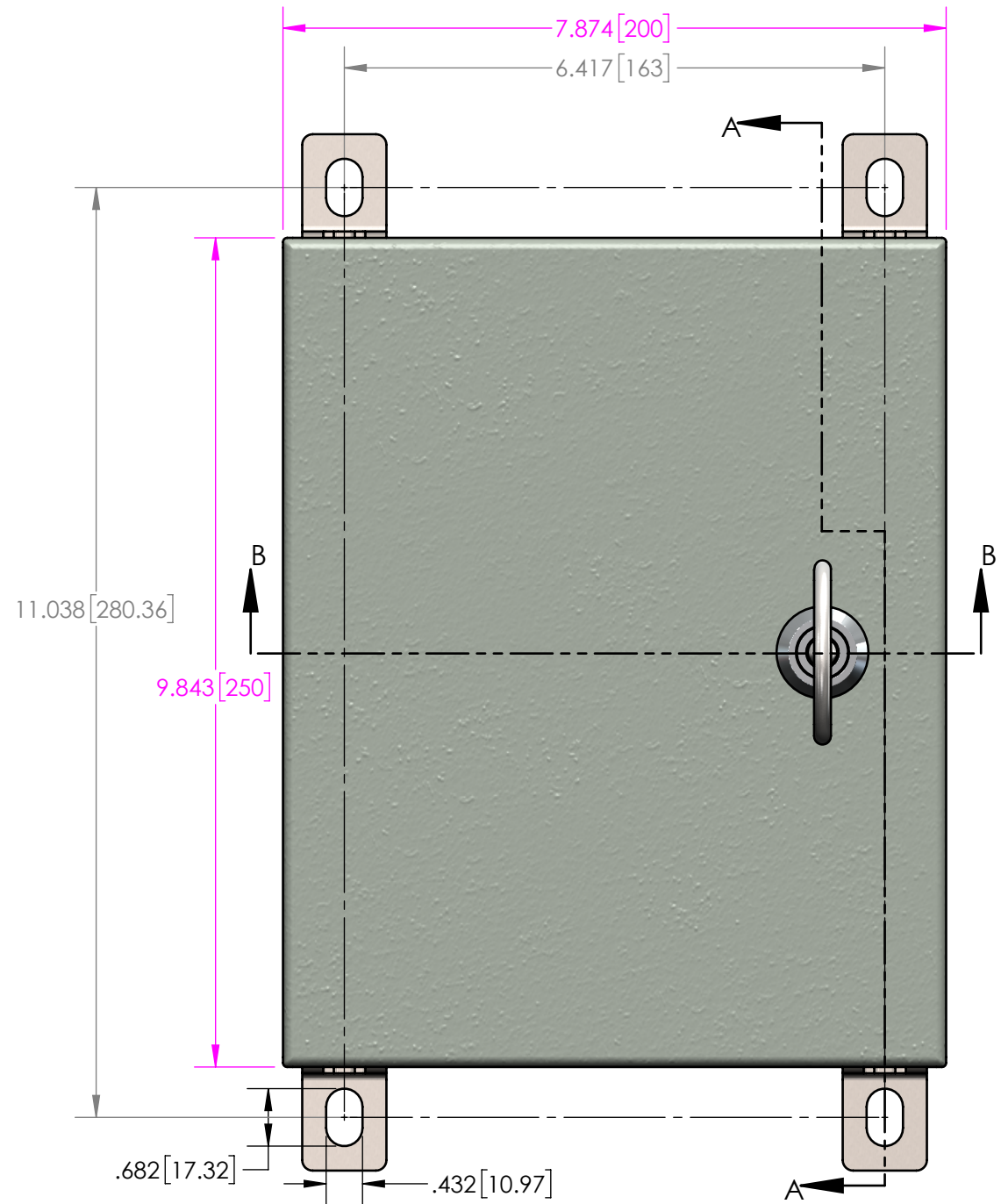


NOTES:
1. UL LISTED UL508A. UL FILE #E194432

REV.	DESCRIPTION	ZONE	BY	APPR'D	DATE
-01	CORRECTED SB-GK-01 FASTENER MATERIAL		D.M.F.		2/8/2018

UNLESS OTHERWISE SPECIFIED: DIMENSIONS ARE IN: INCHES[mm] TOLERANCES: ANGULAR: ±° TWO PLACE DECIMAL: ±. THREE PLACE DECIMAL: ±. PRINTED GRAPHICS: ±		PART NO. SB-30-02		 <small>1305 CHESTER RD. PARKWAY AVON, OHIO 44011-1083 U.S.A. PH: 1-800-548-1233 440-934-0444 FAX: 440-934-0088</small>	
MATERIAL		MATERIAL			
FLAME RATING		SIZE C		SB ENCLOSURE, STEEL, HINGED DOOR, W/PANEL, GRAY	
DRAWN CHECKED		NAME D.M.F. C.C.B.		DATE 5/10/2017 6/1/2017	
REVISIONS		SCALE: 2:3		REV -01	
				SHEET 1 OF 2	

8 7 6 5 4 3 2 1



FOLLOW ASSEMBLY ORDER & TORQ TO 20 IN.-LBS TO MAINTAIN UL RATING

- 12.3
- 12.6
- 12.5
- 12.4
- 12.2

SECTION A-A

SECTION D-D

SECTION C-C

SECTION B-B

REV.	DESCRIPTION	ZONE	BY	APPR'D	DATE
-01	CORRECTED SB-GK-01 FASTENER MATERIAL		D.M.F.		2/8/2018
REVISIONS					

UNLESS OTHERWISE SPECIFIED:
 DIMENSIONS ARE IN: INCHES[mm]
 TOLERANCES: ANGULAR: ± .°
 TWO PLACE DECIMAL: ± .
 THREE PLACE DECIMAL: ± .
 PRINTED GRAPHICS: ±

PROPRIETARY AND CONFIDENTIAL
 THE INFORMATION CONTAINED IN THIS
 DRAWING IS THE SOLE PROPERTY OF
 POLYCASE. ANY REPRODUCTION IN PART
 OR AS A WHOLE WITHOUT THE WRITTEN
 PERMISSION OF POLYCASE IS PROHIBITED.
 CAD FILE: SB-30

PART NO.
SB-30-02

MATERIAL

FLAME RATING

SIZE
C

SB ENCLOSURE, STEEL,
 HINGED DOOR, W/PANEL,
 GRAY

REV
-01

SCALE: 1:2

SHEET 2 OF 2

1305 CHESTER RD. PARKWAY AVON, OHIO 44011-1083 U.S.A.
 PH: 1-800-548-1233 440-934-0444 FAX: 440-934-0088