

BOM Table					
ITEM NO.	PART NUMBER	Rev.	Description	Material	QTY.
1	SK-22P	1	MOUNTING PANEL	AL 5052-H32	1
2	SCREWS-022	-.01	M3.85x1.8 SPAX X 9mm LG, PAN HEAD, PHILLIPS	QSt36-3	4

1	REVISED PANEL		C.C.B.	C.C.B.	10/2/2017
REV.	DESCRIPTION	ZONE	BY	APPR'D	DATE
REVISIONS					

UNLESS OTHERWISE SPECIFIED:
DIMENSIONS ARE IN: INCHES [mm]
TOLERANCES: ANGULAR: ±2°
TWO PLACE DECIMAL: ±.010
THREE PLACE DECIMAL: ±.005
PRINTED GRAPHICS: ±.010

PROPRIETARY AND CONFIDENTIAL
THE INFORMATION CONTAINED IN THIS
DRAWING IS THE SOLE PROPERTY OF
POLYCASE. ANY REPRODUCTION IN PART
OR AS A WHOLE WITHOUT THE WRITTEN
PERMISSION OF POLYCASE IS PROHIBITED.
CAD FILE: SK-22K

PART NO.
SK-22K

MATERIAL

FLAME RATING

SIZE
B

DRAWN
CHECKED

NAME
B.M.B.

DATE
10/22/2015

polycase

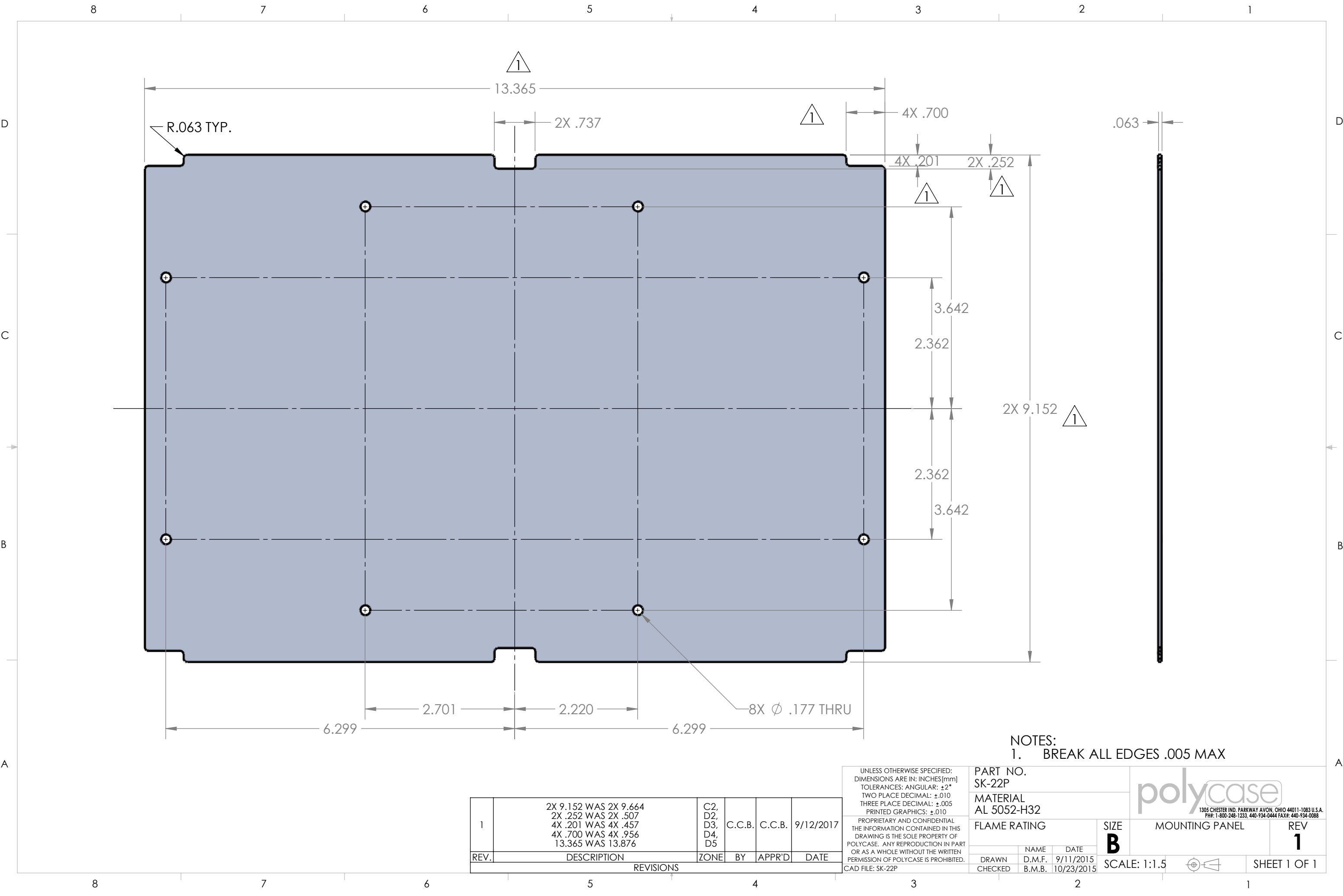
1305 CHESTER IND. PARKWAY AVON, OHIO 44011-1083 U.S.A.
PH#: 1-800-248-1233, 440-934-0444 FAX#: 440-934-0088

MOUNTING PLATE KIT

REV
1

SCALE: 1:1.5


SHEET 1 OF 1



NOTES:
1. BREAK ALL EDGES .005 MAX

1	2X 9.152 WAS 2X 9.664 2X .252 WAS 2X .507 4X .201 WAS 4X .457 4X .700 WAS 4X .956 13.365 WAS 13.876	C2, D2, D3, D4, D5	C.C.B.	C.C.B.	9/12/2017
REV.	DESCRIPTION	ZONE	BY	APPR'D	DATE
REVISIONS					

UNLESS OTHERWISE SPECIFIED:
DIMENSIONS ARE IN: INCHES [mm]
TOLERANCES: ANGULAR: $\pm 2^\circ$
TWO PLACE DECIMAL: $\pm .010$
THREE PLACE DECIMAL: $\pm .005$
PRINTED GRAPHICS: $\pm .010$
PROPRIETARY AND CONFIDENTIAL
THE INFORMATION CONTAINED IN THIS
DRAWING IS THE SOLE PROPERTY OF
POLYCASE. ANY REPRODUCTION IN PART
OR AS A WHOLE WITHOUT THE WRITTEN
PERMISSION OF POLYCASE IS PROHIBITED.
CAD FILE: SK-22P

PART NO. SK-22P			<div><div>polycase</div><div>1305 CHESTER IND. PARKWAY AVON, OHIO 44011-1083 U.S.A. PH#: 1-800-248-1233, 440-934-0444 FAX#: 440-934-0088</div></div>		
MATERIAL AL 5052-H32					
FLAME RATING		SIZE B	MOUNTING PANEL		REV 1
	NAME	DATE	SCALE: 1:1.5		
DRAWN CHECKED	D.M.F. B.M.B.	9/11/2015 10/23/2015			
					SHEET 1 OF 1