

NOTES:  
1. COLOR: LIGHT GRAY  
2. SEE SOLID MODEL FOR COMPLETE PART DEFINITION.

TOLERANCE CHART			
6 SIGMA			
DIMENSION RANGE	TOOL DEPENDENT		NON-TOOL DEPENDENT
.000	.040	±.0018	±.0042
.040	.120	±.0024	±.0054
.120	.240	±.0030	±.0060
.240	.390	±.0036	±.0066
.390	.590	±.0042	±.0072
.590	.870	±.0048	±.0072
.870	1.180	±.0054	±.0078
1.180	1.570	±.0060	±.0084
1.570	2.090	±.0072	±.0096
2.090	2.760	±.0078	±.0108
2.760	3.540	±.0090	±.0120
3.540	4.700	±.0108	±.0132
4.700	6.300	±.0126	±.0150
6.300	7.870	±.0150	±.0180

UNLESS OTHERWISE SPECIFIED:  
DIMENSIONS ARE IN: INCHES[mm]  
TOLERANCES: ANGULAR: ±2°  
TWO PLACE DECIMAL: ±.010  
THREE PLACE DECIMAL: ±.005  
PRINTED GRAPHICS: ±.010

PROPRIETARY AND CONFIDENTIAL  
THE INFORMATION CONTAINED IN THIS  
DRAWING IS THE SOLE PROPERTY OF  
POLYCASE. ANY REPRODUCTION IN PART  
OR AS A WHOLE WITHOUT THE WRITTEN  
PERMISSION OF POLYCASE IS PROHIBITED.  
CAD FILE: WP-39B\*15

PART NO.  
WP-39B\*15

MATERIAL  
POLYCARBONATE

FLAME RATING  
UL94-HB (UL FILE E41613)

NAME	DATE
D.M.F.	8/9/2011
C.C.B.	8/10/2011

DRAWN  
CHECKED

SIZE  
C

SCALE: 1:1

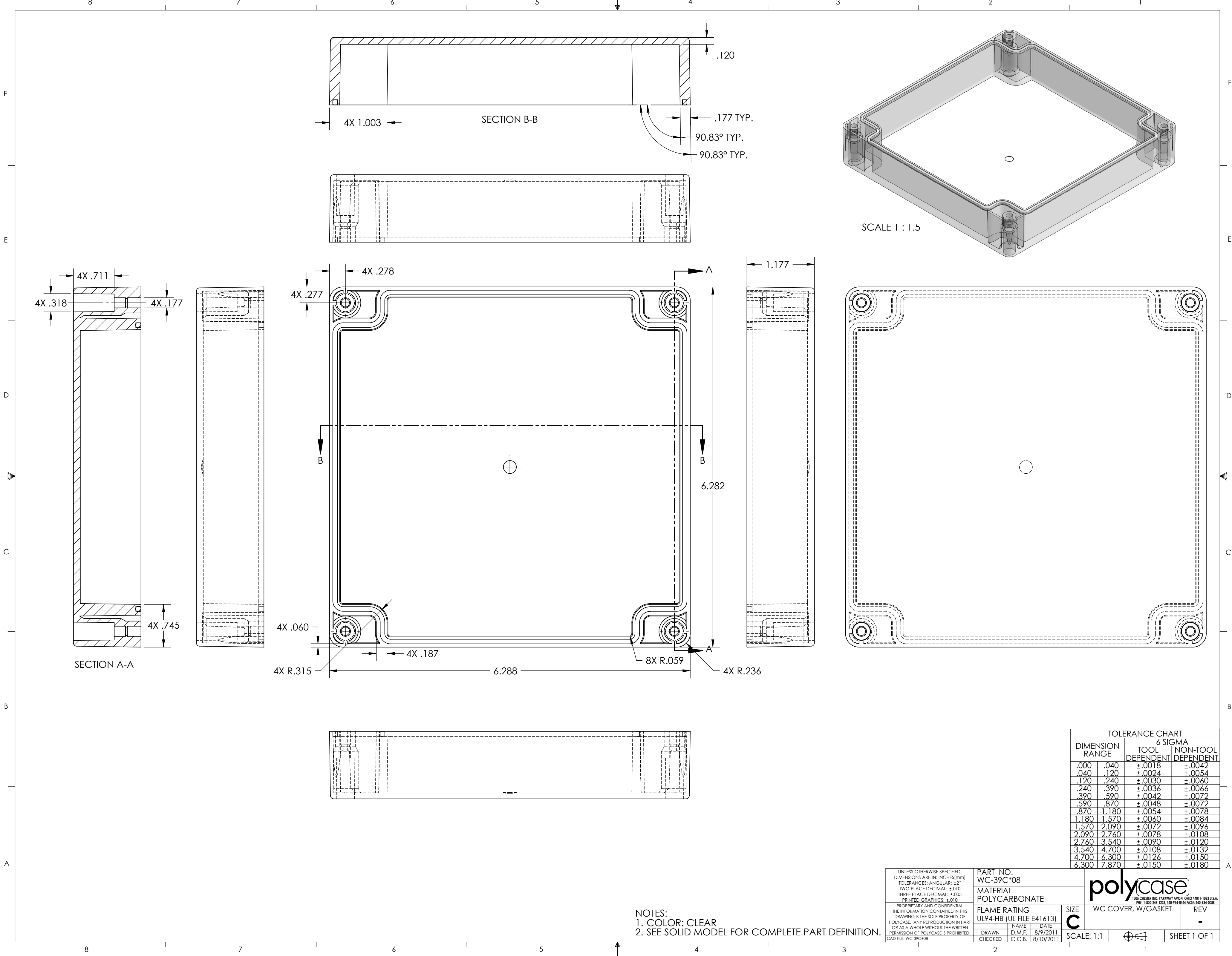
WP BASE, W/MOUNTING  
BOSSES

REV  
-

1305 CHESTER RD. PARKWAY AVON, OHIO 44011-1083 U.S.A.  
PH: 1-800-248-1233, 440-934-0444 FAX: 440-934-0088

**polycase**

SHEET 1 OF 1



NOTES:  
1. COLOR: CLEAR  
2. SEE SOLID MODEL FOR COMPLETE PART DEFINITION.

TOLERANCE CHART			
DIMENSION RANGE		6 SIGMA	
		TOOL DEPENDENT	NON-TOOL DEPENDENT
.000	.040	+.0018	+.0042
.040	.120	+.0024	+.0054
.120	.240	+.0030	+.0060
.240	.390	+.0036	+.0066
.390	.590	+.0042	+.0072
.590	.870	+.0048	+.0072
.870	1.180	+.0054	+.0078
1.180	1.570	+.0060	+.0084
1.570	2.090	+.0072	+.0096
2.090	2.760	+.0078	+.0108
2.760	3.540	+.0090	+.0120
3.540	4.700	+.0108	+.0132
4.700	6.300	+.0126	+.0150
6.300	7.870	+.0150	+.0180

A

UNLESS OTHERWISE SPECIFIED: DIMENSIONS ARE IN: INCHES[mm] TOLERANCES: ANGULAR: ±2° TWO PLACE DECIMAL: ±.010 THREE PLACE DECIMAL: ±.005 PRINTED GRAPHICS: ±.010		PART NO. WC-39C*08		<div>polycase</div> <div>1305 CHESTER RD. PARKWAY AVON, OHIO 44011-1083 U.S.A. PH: 1-800-248-2333 440-934-0444 FAX: 440-934-0088</div>	
PROPRIETARY AND CONFIDENTIAL THE INFORMATION CONTAINED IN THIS DRAWING IS THE SOLE PROPERTY OF POLYCASE. ANY REPRODUCTION IN PART OR AS A WHOLE WITHOUT THE WRITTEN PERMISSION OF POLYCASE IS PROHIBITED. CAD FILE: WC-39C*08		MATERIAL POLYCARBONATE			
FLAME RATING UL94-HB (UL FILE E41613)		SIZE C	WC COVER, W/GASKET		REV -
DRAWN	D.M.F.	8/9/2011	SCALE: 1:1		
CHECKED	C.C.B.	8/10/2011			
			SHEET 1 OF 1		

