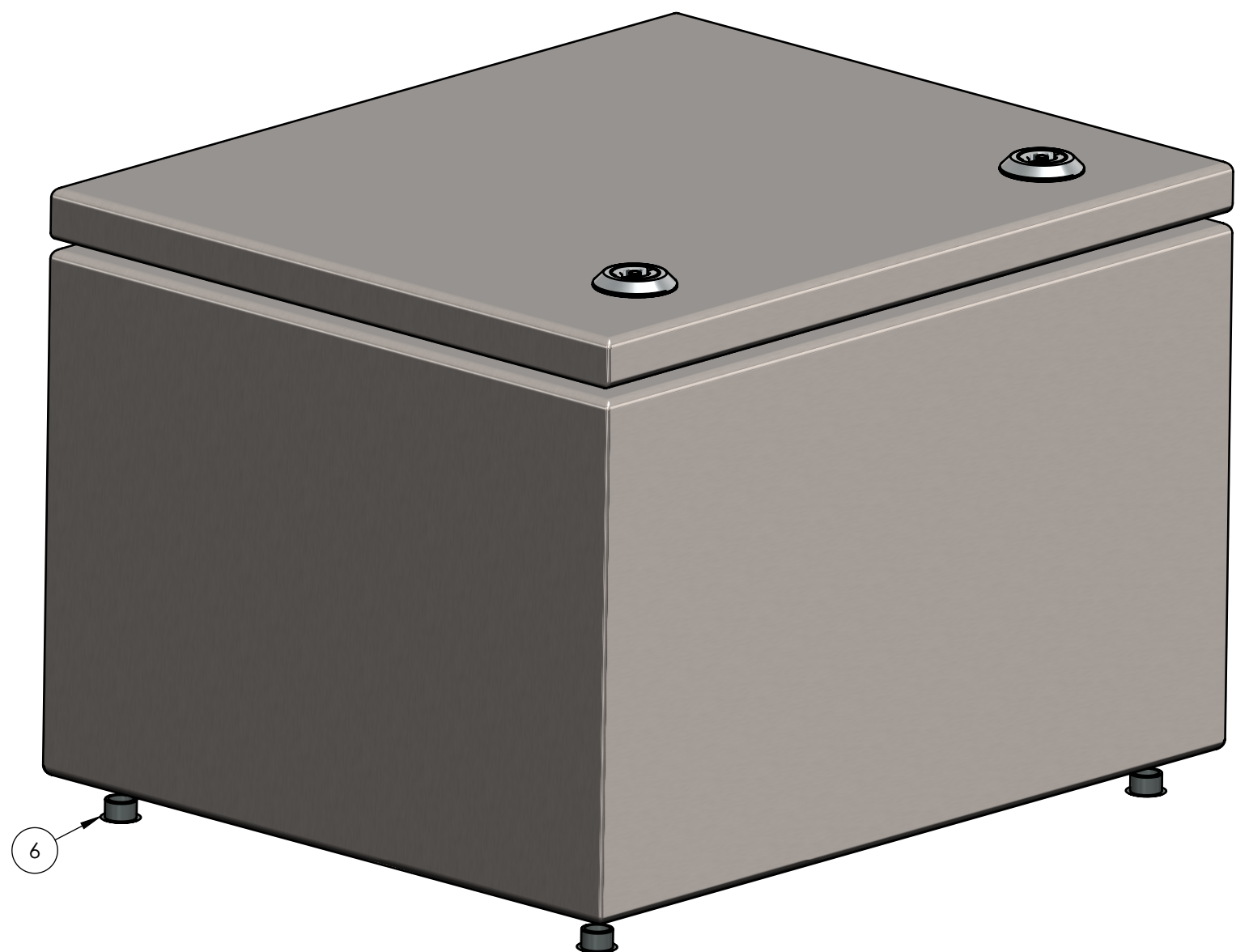
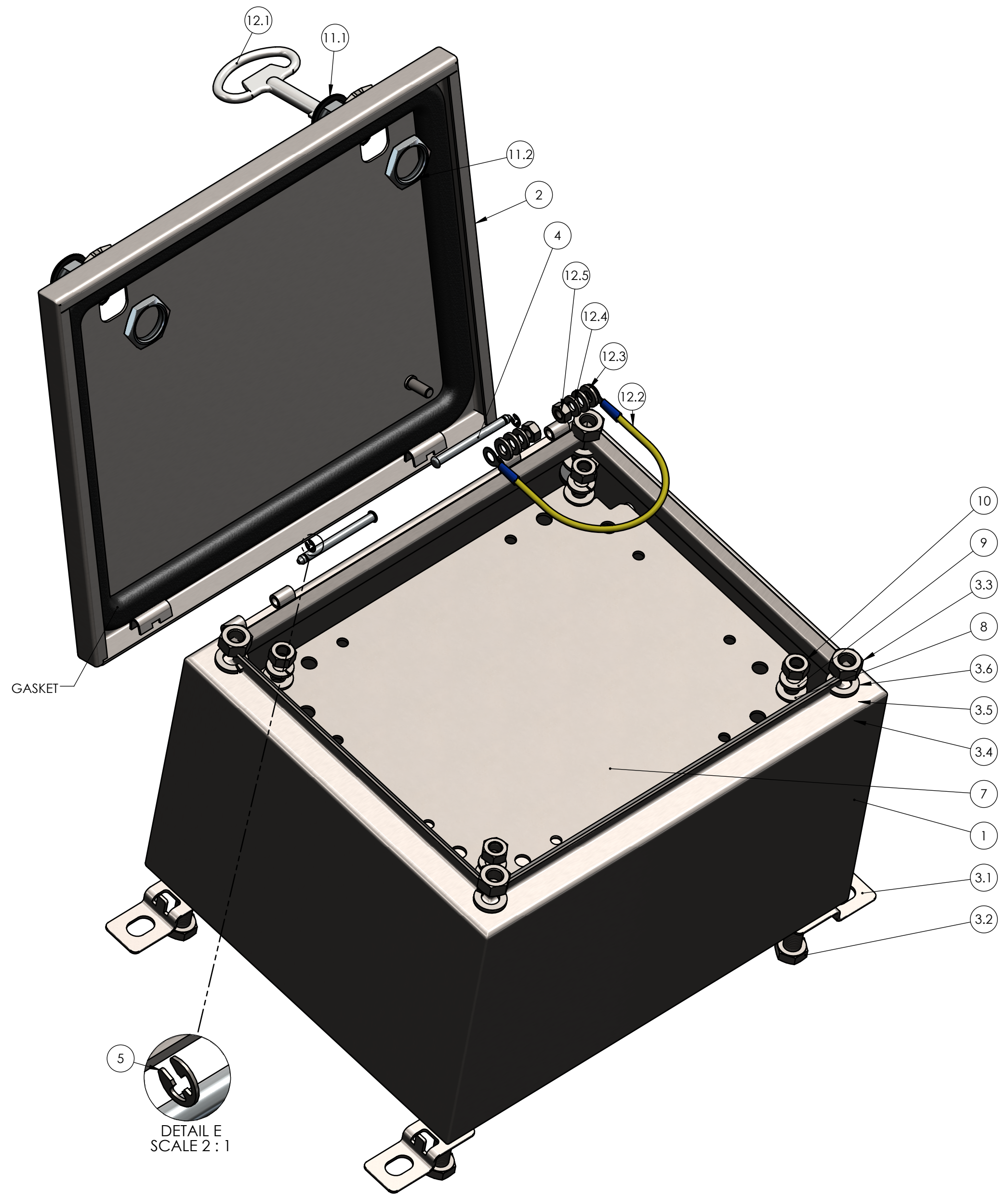


8 7 6 5 4 3 2 1

BOM Table						
ITEM NO.	PART NUMBER	Rev.	Description	Material	Color	QTY.
1	SA-32B-01	-	BASE, HINGED	304SST	NATURAL	1
2	SA-31C-01	-	COVER, HINGED	304SST	NATURAL	1
3	SB-01FK-01	-	FLANGE KIT			1
3.1	SB-01F-01	-	MTG. FLANGE	430 SST	-	4
3.2	SCREWS-040	-	M10 x 1.5 x 20 HEX HEAD SCREW	SST		4
3.3	N-003	-	M10x1.5 HEX NUT	SST		4
3.4	W-005	-	SEALING WASHER	NEOPRENE	BLACK	4
3.5	W-006	-	M10 FLAT WASHER	SST		4
3.6	W-007	-	M10 SPRING LOCK WASHER	SST		4
4	SB-PIN-01	-	HINGE PIN	201 SST	-	2
5	SB-RR-01	-	RETAINING RING	SST		2
6	SB-HP-01	-	HOLE PLUG	NEOPRENE	LIGHT GRAY	4
7	SB-31P	-	MOUNTING PANEL	Zinc-Plated Steel	-	1
8	W-008	-	M8 FLAT WASHER	SST		4
9	W-009	-	M8 SPRING LOCK WASHER	SST		4
10	N-004	-	M8x1.25 HEX NUT	SST		4
11	SB-01L-02	-	LATCH ASSEMBLY			2
11.1	SB-01LB-02	-	LATCH BODY	SST	NATURAL	1
11.2	SB-01LN-02	-	LATCH NUT	SST		1
12	SB-GK-02	-	GROUND WIRE & KEY KIT			1
12.1	SB-KEY-01	-	LATCH KEY		-	1
12.2	SB-WIRE-01	-	GROUND WIRE		-	1
12.3	W-010	-	M6 WASHER SST	SST		4
12.4	W-011	-	M6 SPRING LOCK WASHER, SST	SST		2
12.5	N-005	-	M6x1.0 HEX NUT, SST	SST		2

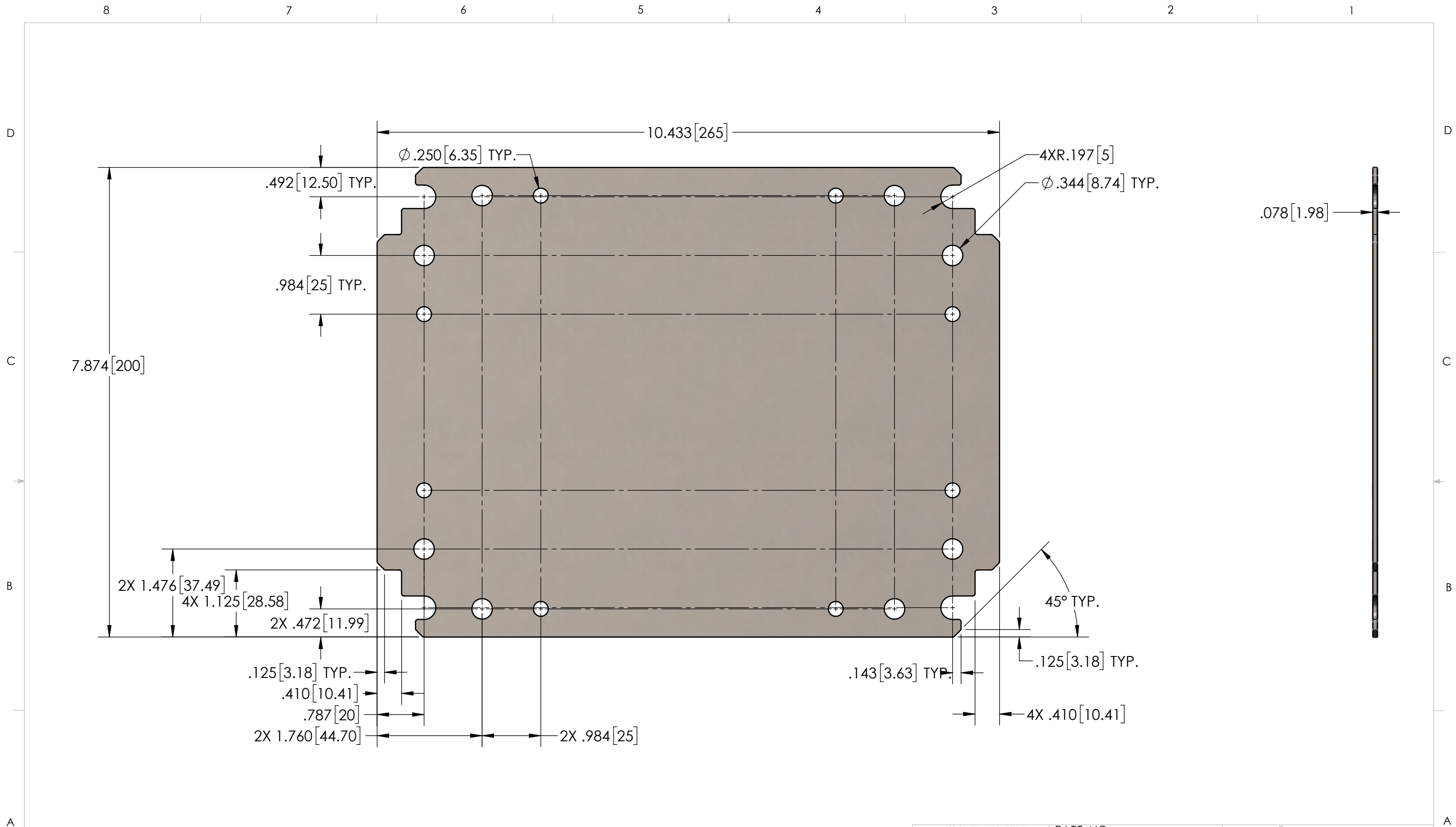


NOTES:
 1. UL LISTED UL508A. UL FILE #E194432

REV.	DESCRIPTION	ZONE	BY	APPR'D	DATE
REVISIONS					

UNLESS OTHERWISE SPECIFIED: DIMENSIONS ARE IN: INCHES[mm] TOLERANCES: ANGULAR: ±° TWO PLACE DECIMAL: ±. THREE PLACE DECIMAL: ±. PRINTED GRAPHICS: ±		PART NO. SA-32-01		MATERIAL	
PROPRIETARY AND CONFIDENTIAL THE INFORMATION CONTAINED IN THIS DRAWING IS THE SOLE PROPERTY OF POLYCASE. ANY REPRODUCTION IN PART OR AS A WHOLE WITHOUT THE WRITTEN PERMISSION OF POLYCASE IS PROHIBITED. CAD FILE: SA-32		FLAME RATING		SIZE C	
DRAWN CHECKED		NAME D.M.F. C.C.B.		DATE 2/7/2018 2/12/2018	
SCALE: 1:2		SA ENCLOSURE, 304SST, HINGED DOOR, W/PANEL, NATURAL		REV -	
SHEET 1 OF 2					

8 7 6 5 4 3 2 1

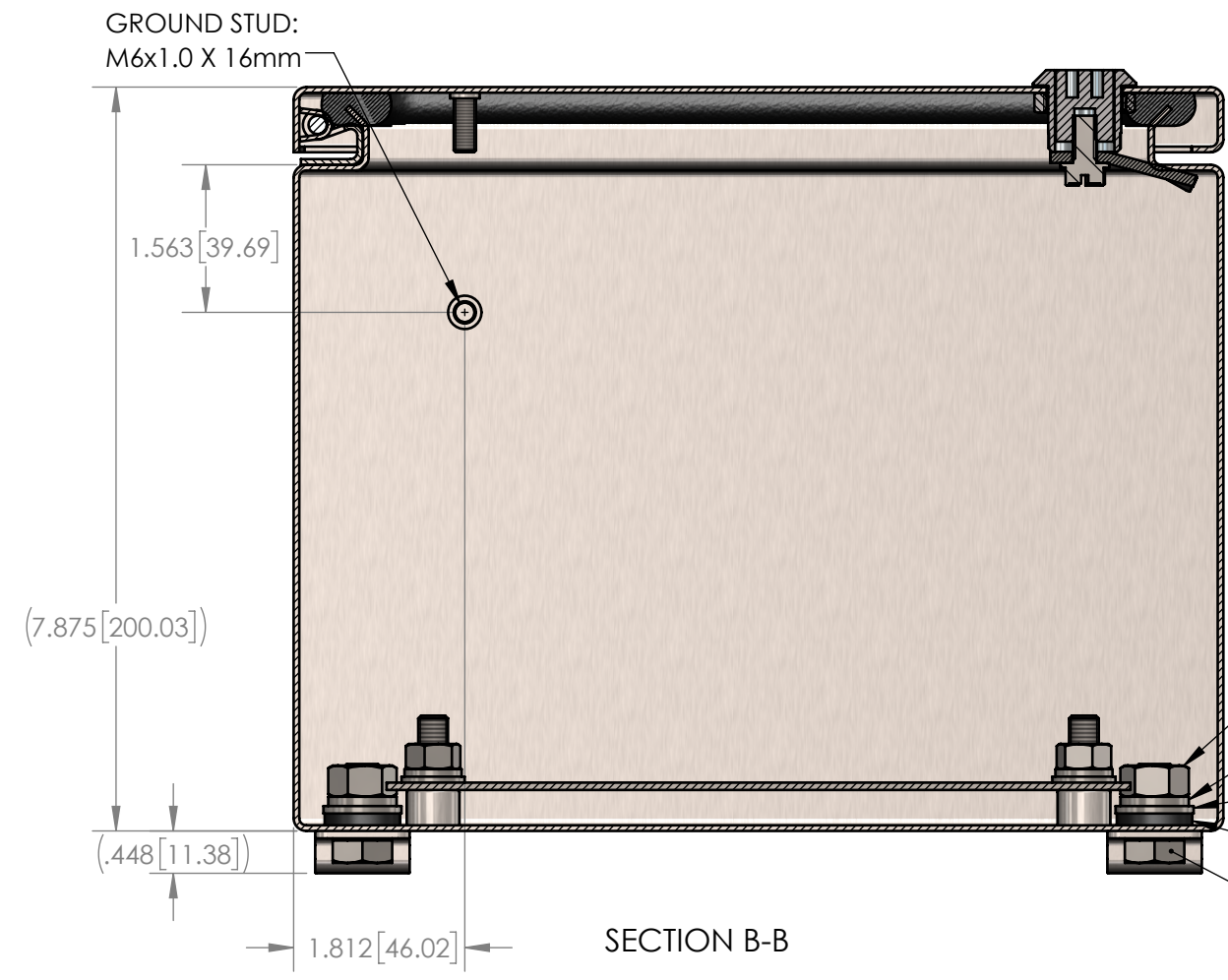
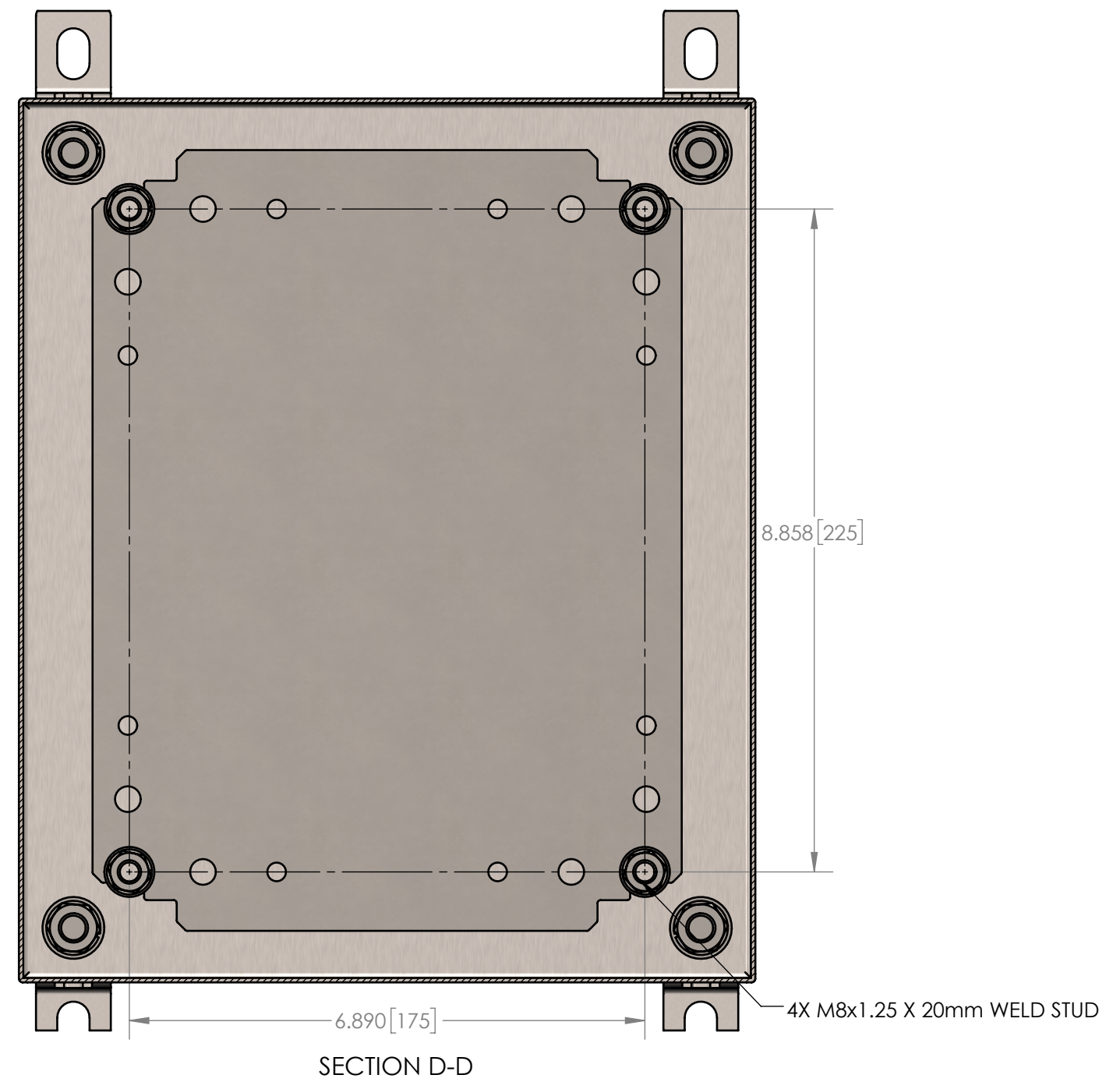
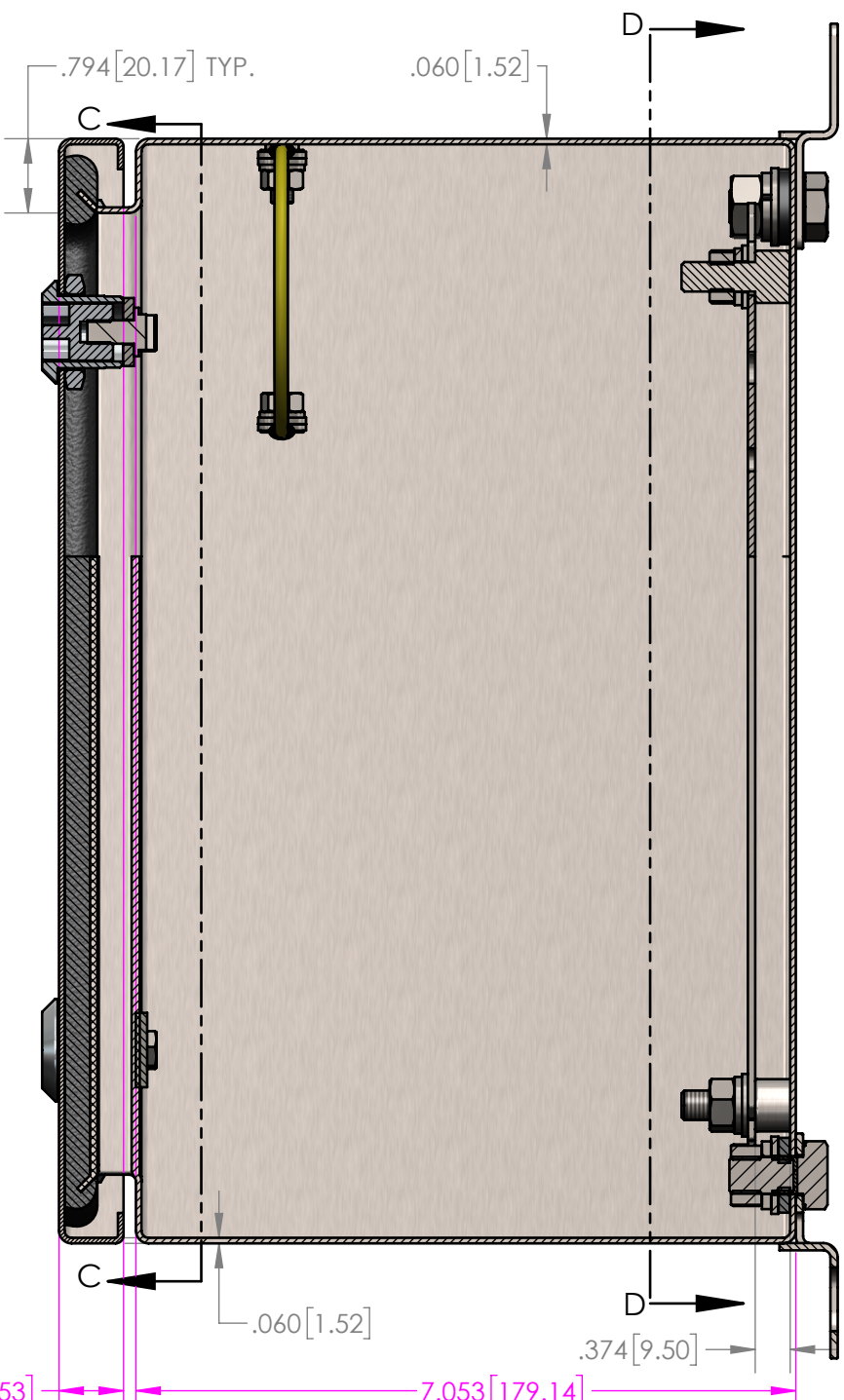
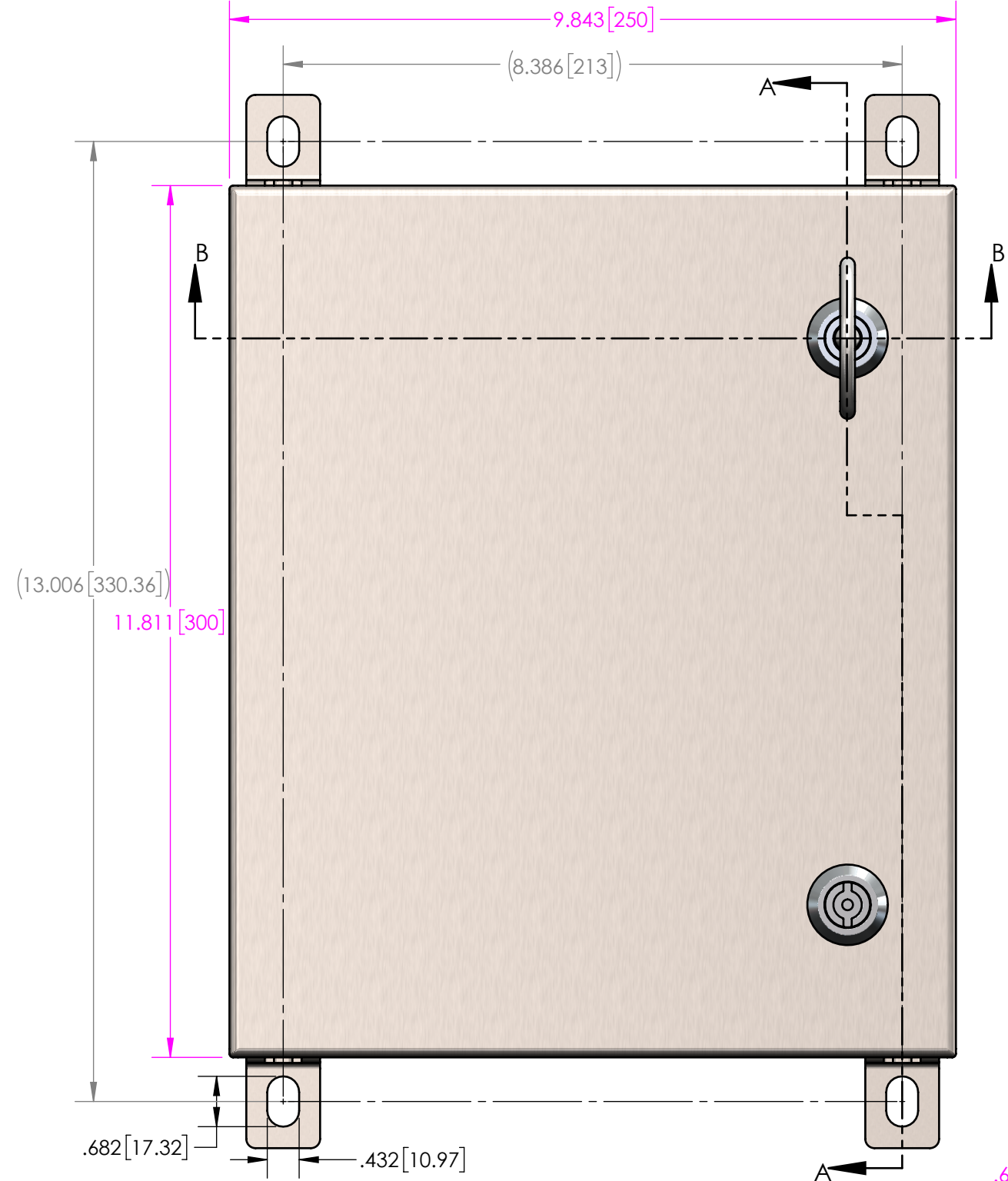


UNLESS OTHERWISE SPECIFIED:
 DIMENSIONS ARE IN: INCHES[mm]
 TOLERANCES: ANGULAR: ±°
 TWO PLACE DECIMAL: ±
 THREE PLACE DECIMAL: ±
 PRINTED GRAPHICS: ±

PROPRIETARY AND CONFIDENTIAL
 THE INFORMATION CONTAINED IN THIS
 DRAWING IS THE SOLE PROPERTY OF
 POLYCASE. ANY REPRODUCTION IN PART
 OR AS A WHOLE WITHOUT THE WRITTEN
 PERMISSION OF POLYCASE IS PROHIBITED.
 CAD FILE: SB-31P

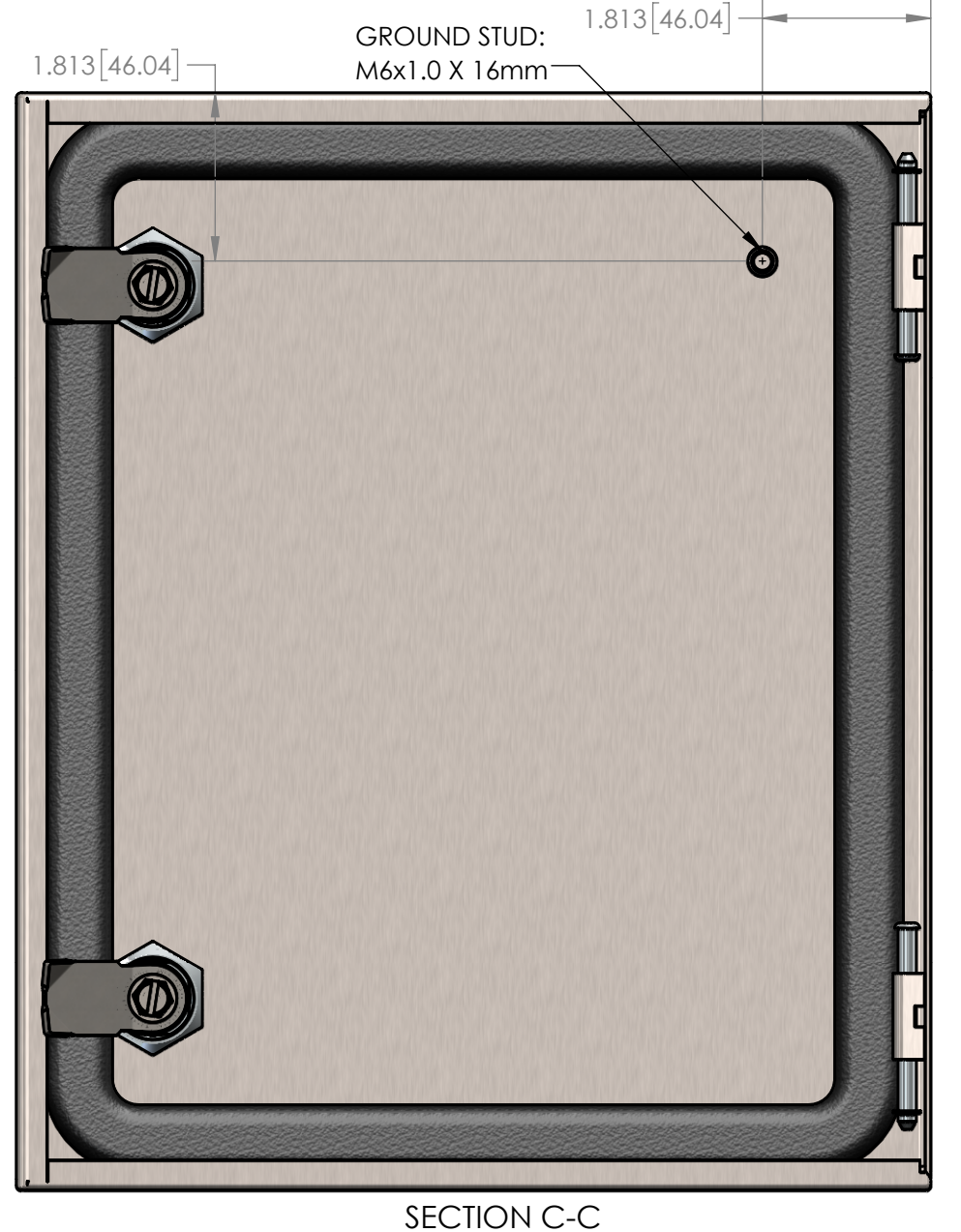
PART NO. SB-31P		 <small>1305 CHESTER IND. PARKWAY AVON, OHIO 44011-1083 U.S.A. PH#: 1-800-248-1233, 440-934-0444 FAX#: 440-934-0088</small>
MATERIAL Zinc-Plated Steel		
FLAME RATING	SIZE B	MOUNTING PANEL
DRAWN D.M.F.	NAME D.M.F.	DATE 5/9/2017
CHECKED C.C.B.	NAME C.C.B.	DATE 6/1/2017
SCALE: 1:1.5		REV -
SHEET 1 OF 1		

REV.	DESCRIPTION	ZONE	BY	APPR'D	DATE
	REVISIONS				



FOLLOW ASSEMBLY ORDER & TORQ TO 20 IN.-LBS TO MAINTAIN UL RATING

- 3.3
- 3.6
- 3.5
- 3.4
- 3.2



UNLESS OTHERWISE SPECIFIED: DIMENSIONS ARE IN: INCHES[mm] TOLERANCES: ANGULAR: ±° TWO PLACE DECIMAL: ±. THREE PLACE DECIMAL: ±. PRINTED GRAPHICS: ±		PART NO. SA-32-01			
PROPRIETARY AND CONFIDENTIAL THE INFORMATION CONTAINED IN THIS DRAWING IS THE SOLE PROPERTY OF POLYCASE. ANY REPRODUCTION IN PART OR AS A WHOLE WITHOUT THE WRITTEN PERMISSION OF POLYCASE IS PROHIBITED. CAD FILE: SA-32		MATERIAL			
FLAME RATING		SIZE C		SA ENCLOSURE, 304SST, HINGED DOOR, W/PANEL, NATURAL	
DRAWN CHECKED		NAME D.M.F. C.C.B.		DATE 2/7/2018 2/12/2018	
SCALE: 1:2		SHEET 2 OF 2			

REV.	DESCRIPTION	ZONE	BY	APPR'D	DATE
REVISIONS					